

# MASTERPIECE SERIES



## MP-S201 STEREO POWER AMPLIFIER

OWNER'S MANUAL

**VA**  
VITUS AUDIO





From the creator

Foreword	4-5
----------	-----

Introduction

About this manual	6
Introduction to the Masterpiece Series	7

1. Getting started

What's in the box, and how to correctly unpack it	8
Heavy lifting – WARNING	8
MP-S201 device overview	9

2. Connecting

Turning the MP-S201 on and off	11
Connecting the MP-S201	12
The rear panel	13

3. Operation

Operation modes	14-15
Functions – left front panel	16
Functions – right front panel	17
The elements in the menu	18
The MP-S201 menu structure	19

4. Operation and service

Maintenance	20
Mains supply voltage	20
Mains fuse	21
Fuse type	21
Replacing a blown fuse	22-23
Firmware updating	24-25

5. Warranty

Warranty	26
----------	----

6. Specifications

MP-S201 Specifications	27
------------------------	----

7. Examples of operation

Operate as class A	28
Changing operating mode	29
Changing display brightness	30
Configuring auto standby	31
Restore factory settings	32



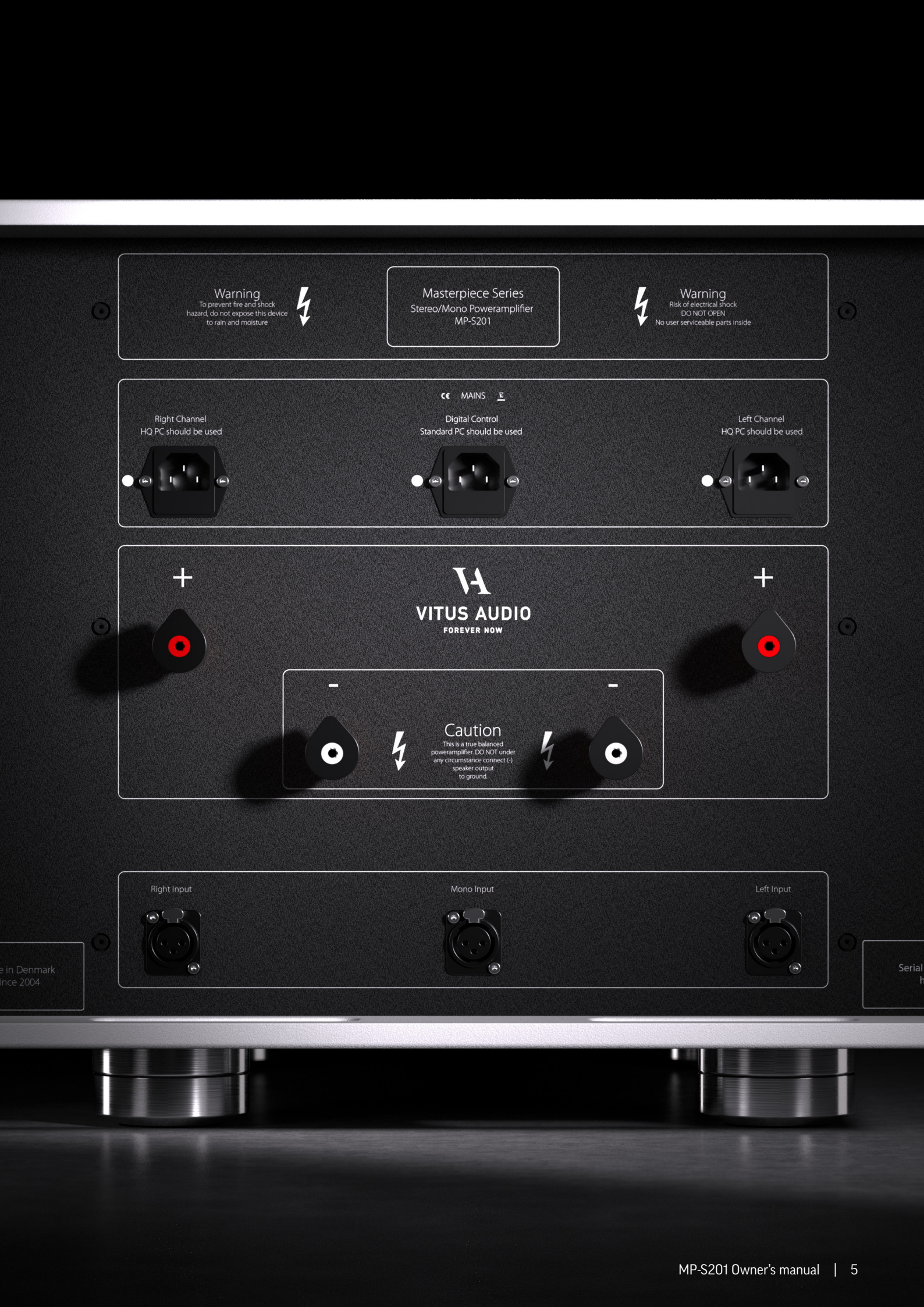
# Foreword

First of all, thank you for choosing the Vitus Audio MP-S201 Stereo Power Amplifier, we are sure you will enjoy it for many years to come. When purchasing a Vitus Audio product, you are guaranteed a musical performance, which exceeds the current musical standards. Vitus Audio is dedicated to musical performance rather than technical details and high performance measures.

At Vitus Audio everything works until proven not to. This way we always try to push the limits and explore the unexplored. As a result of this, many of the solutions we use today are considered to be “impossible to ever get working”, however they have convinced many people and reviewers world wide of the opposite. Before any of our new topologies are implemented in our products, they are carefully reviewed by our dedicated listening panel. This way we can guarantee the correct level of musically performance and robustness.

Generally we're after super neutral, super detailed and super dynamic reproduction without “loosing” the nerve in the music which often is a drawback of many high end amplifiers. Our real strongholds are complete silence, unbelievable depth and width in the soundstage resulting in a far more open sound with higher resolution – you could say, closer to the artist. As a result of the above, our amplifiers do not “focus” on any specific frequencies - i.e. no extension of top or bass, which of course results in high clarity of the midrange since it's “naturally present”!

Hans Ole Vitus | Founder





# About this manual

This is your MP-S201 owner's manual. The following pages will, as clearly as possible, describe how to get your MP-S201 operating quickly and easily. Although some operations are self-explanatory, we strongly suggest you read this manual to avoid any damage to the unit. The manual is designed to be helpful. If there are points you feel we could cover better, or that we have missed out – please tell us by sending an email with your finding to: [sales@avagroup.nu](mailto:sales@avagroup.nu)

Important information is presented like this. Ignoring this information may cause damage to you or the unit. Damage caused to the unit by ignoring this information might invalidate the warranty.



# Introduction to the Masterpiece Series

The Masterpiece Series was born out of requests from the market, and of desire by the engineering team, to create a range of genuinely standard setting components to meet the most demanding criteria. We have always gone way beyond the necessary in pursuit of the perfect sound, but what we needed to achieve with the Masterpiece Series was a level up from everything we had achieved before.

It took us several years to get a foundation of products that could genuinely be called Masterpiece, but we have now managed to create a range that represents the pinnacle of our research efforts to date. These products will thrill in every sense of the word and have to be experienced to be believed.





# What's in the box, and how to correctly unpack it

After you have removed the top of the box, remove the top corners. Next, remove the white foam front panel and the wooden sides of the box. With two people carefully lift the amplifier off the bottom foam corners and place it directly onto the floor.

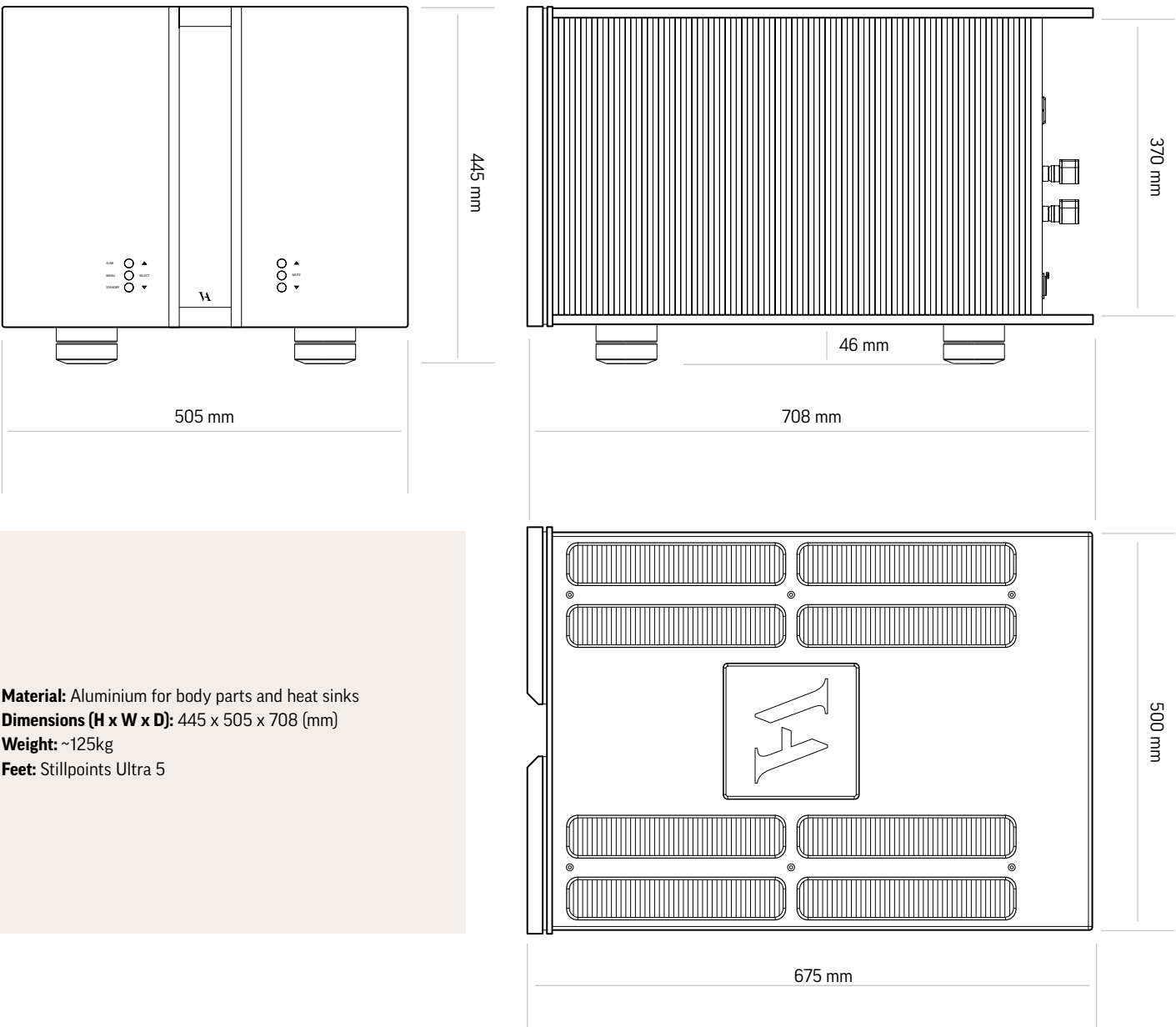
Store the empty box and protective foam for later use.

Beware of any metal objects such as rings or a watch while handling the unit, as these can create scratches which are not covered by warranty

Box contents	
MP-S201	Top foam corners
Power cable (3 Pcs)	Bottom foam corners
USB with manual	Bottom & top foam
Box top	Box sides
	Box Bottom



# MP-S201 device overview



**!** This amplifier is VERY heavy. Make sure that you have at least two people when unpacking and moving the unit. You might damage both your back and the amplifier if extra care is not taken. AVA Group A/S cannot be held responsible for any damage incurred as a result of careless handling of the unit.





# Turning the MP-S201 on and off

Always turn on the products beginning from the source:

**Source** —————> **Pre-amplifier** —————> **Power amplifier**

Always turn off your products in reverse order:

**Power amplifier** —————> **Pre-amplifier** —————> **Source**

**Moving and transporting the MP-S201**

Always follow this procedure:

- 1. Turn the MP-S201 off.
- 2. Wait 2 minutes.
- 3. Disconnect the mains power supply (take the power cables out).
- 4. Wait 15 minutes to allow the MP-S201 to discharge.
- 5. Move/Transport the MP-S201
- 6. Allow 24 hours for the MP-S201 to reach room temperature.
- 7. Connect the MP-S201.



Not following this procedure, may cause damage to any of your products/speakers. Damage caused by not following this procedure will invalidate the warranty.



# Connecting the MP-S201



Place the MP-S201 on its shelf. Connect the preamplifier to one of the inputs on the MP-S201 (labelled Right input, Left input or Mono input on the rear panel.)

Connect the Speaker output of the MP-S201

Lastly connect the mains to the amplifier, after you have connected both inputs and outputs.

ATTENTION: Never plug in/unplug any cables within the whole of the system while the MP-S201 is operational. Always set the MP-S201 into standby mode before making any system adjustments.

## MP-S201 Inputs

- Input XLR ————— 3 pin XLR
- Digital Power ————— C13/15 IEC
- Analogue Power ————— C13/15 IEC

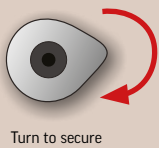
## MP-S201 Outputs

- Speaker left ————— Spade/Banana
- Speaker right ————— Spade/Banana

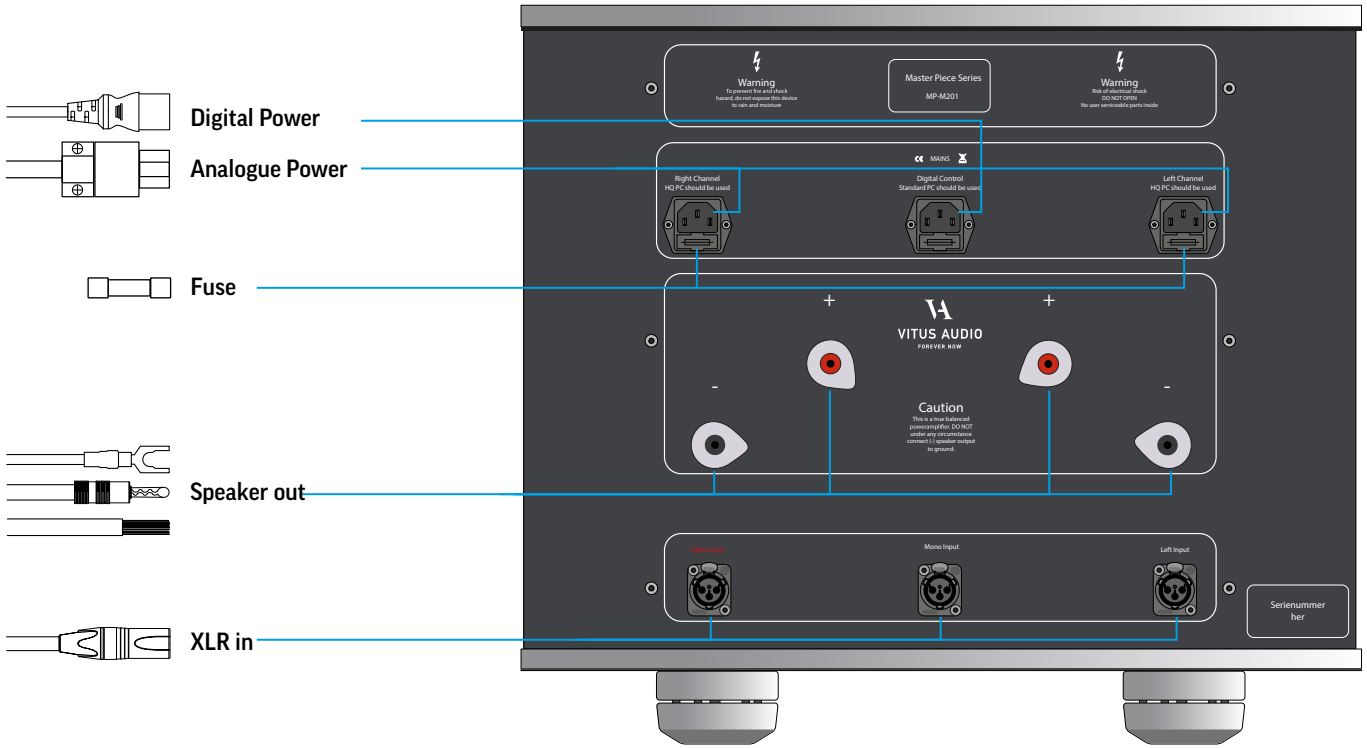
### The Speaker terminal

The MP-S201 is equipped with Furutech's Torque Guard Binding Posts. Place your Jack, Spade or wire in the binding post and turn to secure.

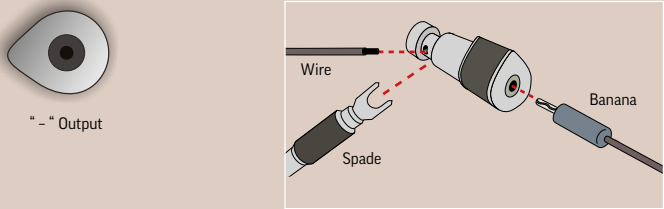
The Torque Guard technology, prevents over-tightening and allows each post to be evenly tightened for improved channel balance and signal transfer.



# The rear panel

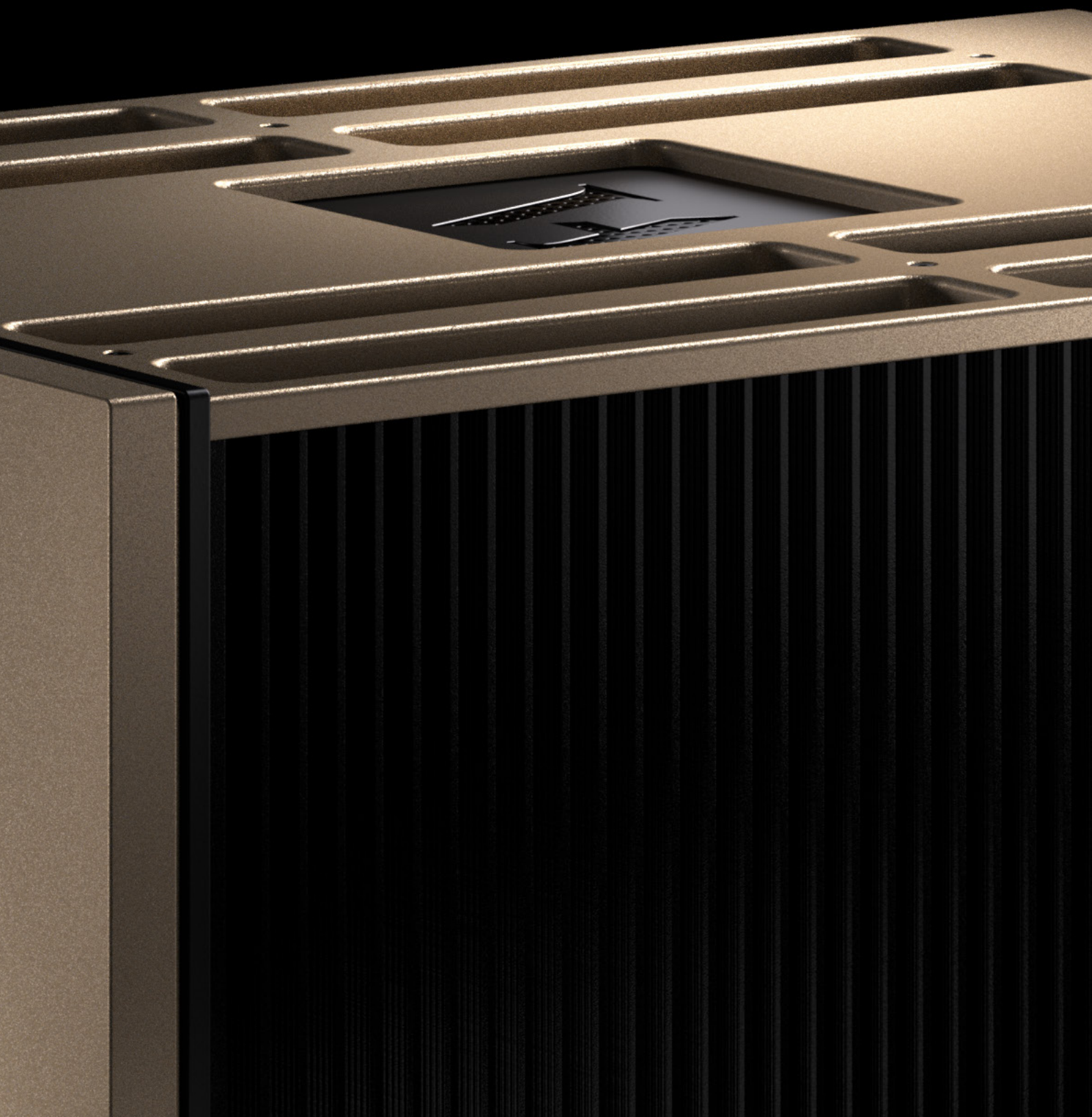


**!** This is a true balanced amplifier, DO NOT connect the “-” output (Figure 3) to any ground source, including chassis or signal ground, this will damage the amplifier and invalidate your warranty.





## Operation modes



## Operation modes

**The MP-S201 has 3 operation modes**

**1. NORMAL**

This is the mode you use when listening to music.

**2. MENU**

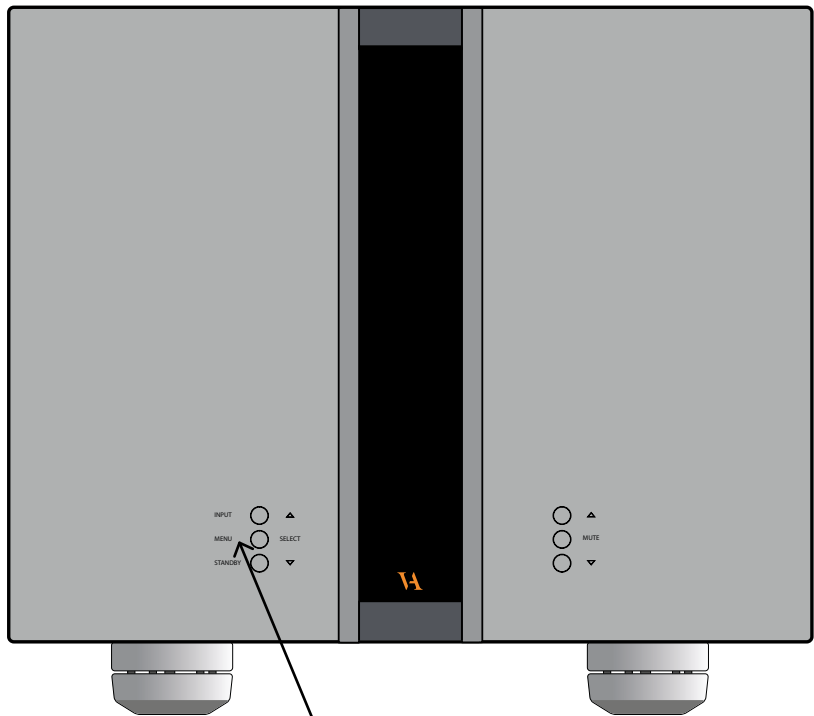
In this mode you can alter the settings of the MP-S201.

**3. STANDBY**

In this mode the controls of the MP-S201 are deactivated.



# Functions – left front panel



## Normal mode

In normal mode there are 3 basic functions/buttons available on the left-hand side at the front of the unit.

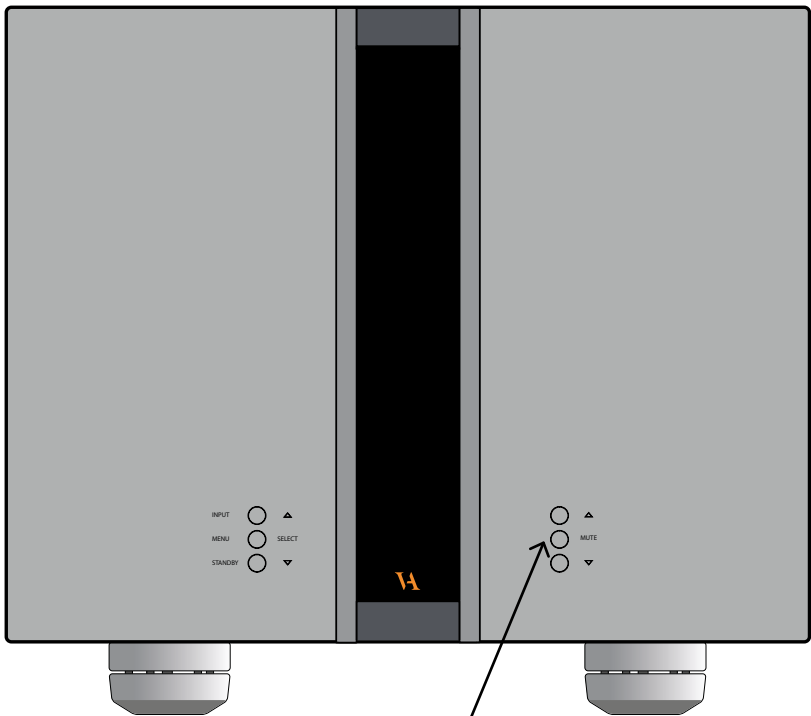
- 1. A/AB**  
Switches between Class A and Class AB.
- 2. MENU**  
Switches to “Menu mode”
- 3. STANDBY**  
Switches in and out of “Standby Mode”

## Menu mode

You enter menu mode, by pushing the “MENU” button once in Normal mode. In the Menu mode there are 3 basic functions/buttons as follows:

- 1. △**  
Scroll forward in the menu
- 2. MENU/ SELECT**  
Enter and Exit submenus and select settings
- 3. ▽**  
Scroll backward in the menu

# Functions – right front panel



## Normal mode

In normal mode there is 1 basic function available on the right-hand side at the front of the unit.

- 1. △**  
Not used in this mode
- 2. MUTE**  
Mutes the output
- 3. ▽**  
Not used in this mode



# The elements in the menu

You can modify the settings of your MP-S201 by entering the menu and selecting the options you require. Refer to the menu structure diagram on page 19 for specific information.

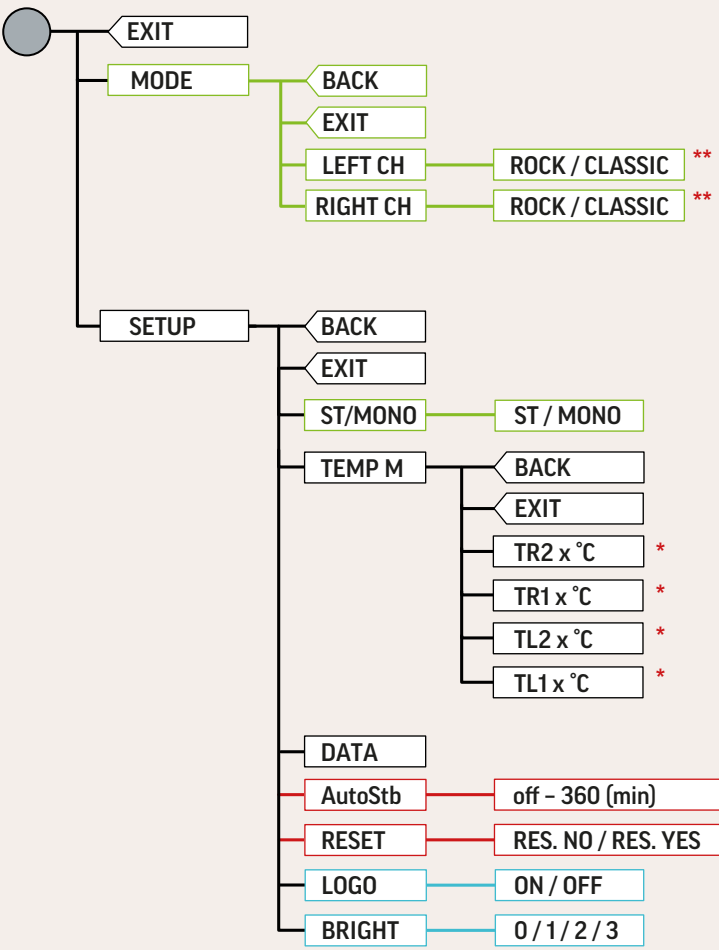
The sub-menus are highlighted in different colors.  
**MODE**, **ST/MONO**, **TEMP.M**, **DATA**, **AutoStb**, **RESET**, **BRIGHT**.

See chapter 7 for options on modifying settings.



- MODE**  
Select if the MP-S201 should operate in Classic or Rock mode.
- ST/MONO**  
Select between STEREO or MONO input.
- TEMP.M**  
Shows the temperature inside the MP-S201.
- DATA**  
Shows information about this MP-S201.
- AutoStb**  
Choose if the product should automatically enter standby mode after the buttons on the remote or on the front of the unit haven't been used for X minutes.
- RESET**  
Restore the settings of the MPS201 to its default settings.
- LOGO**  
Turn ON/OFF the VA logo on the front panel
- BRIGHT**  
Change the brightness of the display to 0, 1, 2 or 3.

# The MP-S201 menu structure



**\*\* The MP-S201 will count down from 60 to 0 and restart, after changing mode and exiting the menu**

**\* Change the scale by pressing the MUTE button**



# Operation and service



## Maintenance and safety notice

Vitus Audio products are designed to run for many years without the need for regular maintenance.

The Vitus Audio MP-S201 contains no user serviceable parts except from the mains fuse. Do not attempt to open the case as there are potentially dangerous voltages present inside. Should your MP-S201 show signs of malfunction, then please contact your dealer or Vitus Audio.

## Mains supply voltage

Any unit may be set for operation in 100V, 115V, 230V or 240V AC. The units shipped are set for the mains supply voltage of the destination. The mains supply voltage can be changed in the product. In some cases, this work can be performed by our authorised partners around the world. In rare cases we would ask that the product is returned to the Vitus Audio factory in Denmark for the conversion to be done.

# Operation and service



## Mains fuse

The mains fuse is accessible from the outside of the amplifier. You will find the mains fuse, just below the power inlet. If the fuse blows, you can easily replace it. The fuse only blows on the occurrence of power surges or if there is a fault in the unit. Normally power surges cause no other damage other than blowing the fuse. When the fuse blows repeatedly on replacement, then the unit most likely has a malfunction. In case of malfunction the unit must be returned to Vitus Audio for repair.

## Fuse type:

**Left and Right Channel:**  
**Physical size - 20 x 5mm**  
**230V & 240V - 6.3A T (Time lag fuse)**  
**100V & 115V - 12A T (Time lag fuse)**

**Digital Control:**  
**Physical size - 20 x 5mm**  
**230V & 240V - 2A T (Time lag fuse)**  
**100V & 115V - 2A T (Time lag fuse)**

Replacing the fuse with a fuse of a type and rating different from the original fuse, might result in damage to the unit and injury to you (the user). Damage to the unit as a result of wrongly replacing the mains fuse, will invalidate the guarantee. For an explanation of how to replace the fuse see chapter 4 "replacing a blown fuse".





# Replacing a blown fuse

 REMOVE THE POWER CABLE

## Different fuse types

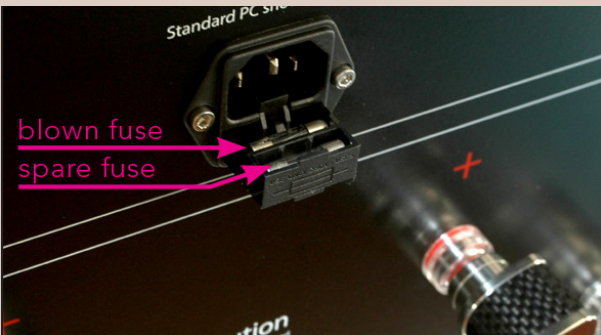
The fuses in the Left (L) and Right (R) Channel are higher amperage than the fuse in the digital(D) control. Do not replace the L and R fuses with a D fuse, or the other way around. See 'Fuse Type' for the correct fuse.



1. The fuse carriers are placed on the back under the power connectors.



2. Take a small flat bladed screwdriver and place it over the fuse carrier.



3. There is a spare fuse available in the fuse carrier.

# Replacing a blown fuse



4. Remove the blown fuse and take the spare fuse.



5. Place the spare fuse in the fuse carrier after you removed the blown fuse.



6. Click the fuse in place.



7. Push the fuse carrier in place.



1. TERMS AND CONDITIONS  
LIMITED WARRANTY

Vitus Audio warrants the product designated herein to be free of manufacturing defects in material and workmanship, subject to the conditions hereinafter set forth, for a period of two (2) years from the date of purchase by the original purchaser or no later than six (6) years from the date of shipment to the authorised Vitus Audio cooperating partner, whichever comes first, excepting any cosmetic damage to chassis parts. (See 6)

2. CONDITIONS

This Warranty is subject to the following conditions and limitations. The Warranty is void and inapplicable if the product has been used or handled other than in accordance with the instructions in the owner's manual, abused, or misused, damaged by accident or neglect or in being transported, or the defect is due to the product being repaired or tampered with by anyone other than Vitus Audio or authorised Vitus Audio repair center. The product must be packed in its original box and returned to Vitus Audio or an authorised repair center by the customer at his or her sole expense. Vitus Audio will pay return freight of its choice.

IMPORTANT!

A returned product MUST be accompanied by a written description of the defect and a photocopy of the original purchase receipt. This receipt must clearly list model and serial number, date of purchase, the name and address of the purchaser and authorised dealer and the price paid by the purchaser. Vitus Audio reserves the right to modify the design of any product without obligation to purchasers of previously manufactured products and to change the prices or specifications of any product without notice or obligation to any person.

3. LIMITED TO ORIGINAL PURCHASER

This Warranty is for the sole benefit of the original purchaser of the covered product and shall not be transferred to a subsequent purchaser of the product.

4. DURATION OF WARRANTY

This Warranty expires on the second (2nd) year anniversary of the date of purchase or no later than the sixth (6th) anniversary of the date of shipment to the authorised Vitus Audio cooperating partner, whichever comes first.

5. CHASSIS

Damage or cosmetic defects are not warranted.

6. DEMONSTRATION EQUIPMENT

Equipment used by an authorised cooperating partner for demonstration purposes is warranted to be free of manufacturing defects in materials and workmanship for a period of three (3) years from the date of shipment to the authorised cooperating partner. After the first year, demo equipment needing warranty service must be packed in its original box and returned to Vitus Audio by the cooperating partner at his or hers sole expense. Vitus Audio will pay return freight of its choice. A returned product must be accompanied by a written description of the defect on a VITUS AUDIO RETURNED GOODS AUTHORISATION form. Dealer-owned demonstration equipment sold at retail within three (3) years of date from shipment

to the dealer is warranted to the first retail customer to be free of manufacturing defects in materials and workmanship for the duration of the three (3) Year Limited Warranty remaining (as measured from the date of shipment of the equipment to the Vitus Audio partner. In the event warranty service is needed under these conditions, the owner of the equipment must provide a copy of his purchase receipt, fulfilling the requirements described under "2. Conditions" above. The product must be packed in its original box, and returned to Vitus Audio or an authorised Vitus Audio repair center by the customer at his or her sole expense. Vitus Audio will pay return freight of its choice.

7. MISCELLANEOUS

Any implied warranties relating to the above product shall be limited to the duration of this warranty. The warranty does not extend to any incidental or consequential costs or damages to the purchaser. Some countries do not allow limitation on how long an implied warranty lasts or exclusion or limitation of incidental or consequential damages, so the above limitations or exclusions may not apply to you. This warranty gives you specific legal rights, and you may also have other rights which vary from country to country.

8. WARRANTOR

Inquiries regarding the above Limited Warranty may be sent to the following address:  
AVA Group A/S  
Hammershusvej 3L  
DK7400 Herning Denmark  
Att. Customer Service

Before sending any products to the above address, an RMA case number has to be issued. This can be obtained after initial dialogue with our service department which is initiated by filling out the "service and upgrade" webform on our website, with all the required information.

Information required:  
Copy of original purchase invoice  
Serialnumber  
Detailed description of problem

9. WARRANTY OUTSIDE OF DENMARK

Vitus Audio has authorised distribution in many countries in the world. In each country, the authorised importing retailer or distributor has accepted the responsibility for warranty of products sold by that retailer or distributor. Warranty service should normally be obtained from the importing retailer or distributor from whom purchased your product. In the unlikely event of service required beyond the capabilities of the importer, Vitus Audio will fulfill the conditions of the warranty. Such products must be returned at he owner's expense to the Vitus Audio factory, together with a photocopy of the bill of sale for that product, a detailed description of the problem, and any other information necessary return shipment. In many cases the retailer your purchased the product from, will handle this for you.

10. FURTHER INFORMATION

Should you have any further questions related to our warranty, please contact us at the following email: [service@avagroup.nu](mailto:service@avagroup.nu)

MP-S201 Specifications

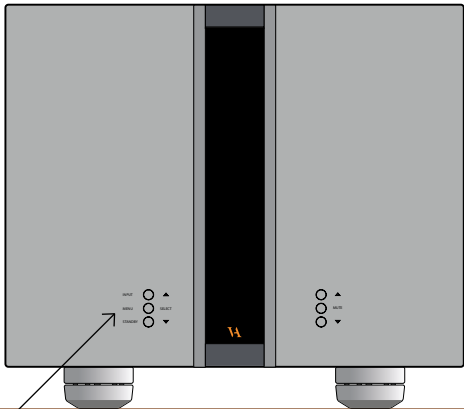
INPUT	XLR Stereo	XLR Mono
Available	1 (L+R)	1
Sensitivity	0.7 V <sub>RMS</sub>	0.7 V <sub>RMS</sub>
Impedance	10kΩ	10kΩ
OUTPUT (Each ch.)		
Available	1	
Impedance	0.075Ω	
Power W <sub>RMS</sub> (8Ω)	~25W Class A / ~500W Class AB	
Power W <sub>RMS</sub> (4 Ω)	~50W Class A / ~1000W Class AB	
Frequency response	+800kHz	
Signal to noise ratio	>130dB	
THD + noise	<0.01%	
POWER CONSUMPTION		
Standby	<1W	
Full power	550W	
DIMENSIONS		
Height	445mm	
Width	505mm	
Depth	708mm	
Weight	~125kg	

MP-S201





# Operate as class A



EXAMPLE 1

## Operate in either Class AB or Class A mode.

The MP-S201 can be set to operate in either Class AB or Class A mode. The standard Class of operation is Class AB. To set the unit to Class A mode, follow below steps.

Simply press the A/AB button when not in the menu. This changes the Class from Class AB to Class A mode

The unit has now been set to operate in Class A mode. This will reset to Class AB when the unit is being put into standby.



YOU PRESS

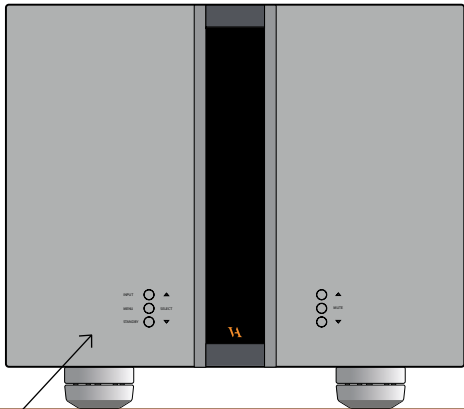
A/AB



YOU SEE

CLASS AB  
CLASS AB

# Changing operating mode



EXAMPLE 2

## Changing operating mode

The display on MP-S201 can be set to different operating modes, according to your preference.

Press the "MENU" button to enter menu mode.

Use the function buttons on the front of the unit to navigate to - MODE.

1. △  
Scroll forwards in the menu.
2. MENU/SELECT  
Enter and exit submenus and select settings.
3. ▽  
Scroll backwards in the menu.

Enter the MODE. menu and adjust both left and right CH to the desired mode. Then press select and navigate to the exit menu point and press select again.

The unit will now count down from 60s and restart once at 0s.

The unit has now been set to operate in the mode chosen by you in the previous step.



YOU PRESS

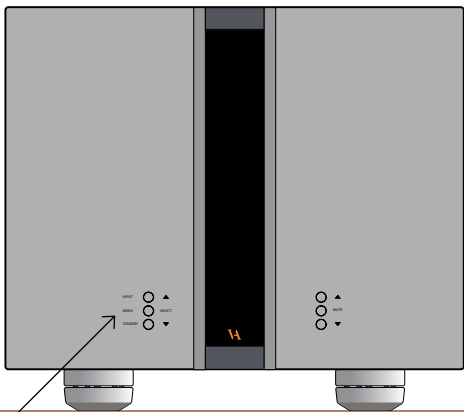


YOU SEE

	CLASS AB
MENU	< EXIT
▽	MODE >
SELECT	< BACK
△	RIGHT CH
SELECT	CLASSIC
△	ROCK
SELECT	RIGHT CH
△	LEFT CH
SELECT	CLASSIC
△	ROCK
SELECT	LEFT CH
△	< EXIT
SELECT	Countdown
	CLASS AB



# Changing display brightness



EXAMPLE 3

## Changing display brightness

The display on MP-S201 can be set to different brightness levels, according to your preference.

Press the “MENU” button to enter menu mode.

Use the function buttons on the front of the unit to navigate to SETUP – BRIGHT.

1. △  
Scroll forwards in the menu.

2. MENU/SELECT  
Enter and exit submenus and select settings.

3. ▽  
Scroll backwards in the menu.

Enter the BRIGHT menu and navigate up or down in the brightness steps by utilising the function buttons, until the desired brightness is shown in the display. Then press select and navigate to the exit menu point and press select again.

The new brightness setting has now been saved.



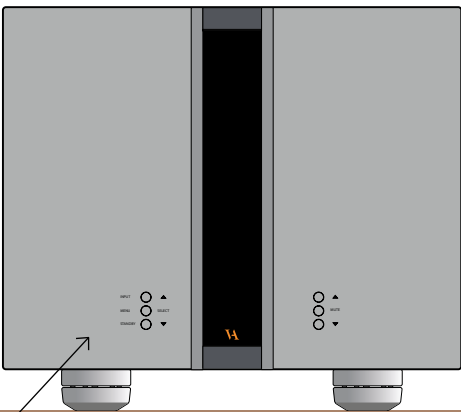
YOU PRESS



YOU SEE

	CLASS AB
MENU	<- EXIT
△	SETUP ->
SELECT	<- BACK
△	BRIGHT ->
SELECT	BRIGHT 1
△	BRIGHT 2
SELECT	BRIGHT ->
▽	<- BACK
▽	<- EXIT
SELECT	CLASS AB

# Configuring auto standby



EXAMPLE 4

## Configuring auto standby

The MP-S201 can be configured to automatically go into standby after a set time period, after no buttons on the remote or front of the unit having been pressed.

Press the “MENU” button to enter menu mode.

Use the function buttons on the front of the unit to navigate to SETUP – AutoStb.

1. △  
Scroll forwards in the menu.

2. MENU/SELECT  
Enter and exit submenus and select settings.

3. ▽  
Scroll backwards in the menu.

Enter the AutoStb menu and navigate up to the desired auto standby time, in this case 30 minutes. Then press select and navigate to the exit menu point and press select again.

The new auto standby time setting has now been saved and is repeated until changed.



YOU PRESS

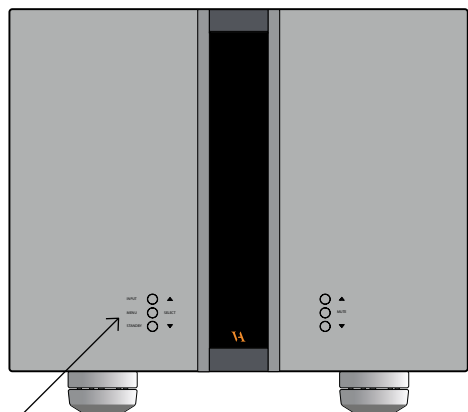


YOU SEE

	CLASS AB
MENU	< EXIT
△	SETUP >
SELECT	< BACK
△	BRIGHT >
△	LOGO >
△	RESET >
△	AutoStb >
SELECT	OFF
△	30 Min
SELECT	AutoStb >
▽	RESET >
▽	LOGO >
▽	BRIGHT >
▽	< BACK
▽	< EXIT
SELECT	CLASS AB



# Restore factory settings



EXAMPLE 5

Restore factory settings

The MP-S201 can be restored to it's factory settings if needed. Press the "MENU" button to enter menu mode.

Use the function buttons on the front of the unit to navigate to SETUP - RESET.

1. △  
Scroll forwards in the menu.

2. MENU/SELECT  
Enter and exit submenus and select settings.

3. ▽  
Scroll backwards in the menu.

Enter the RESET menu and navigate up or down utilising the function buttons, until the displays show RES: YES. Then press select and the MP-S201 will reset itself and go into standby.

The product has now been reset to factory settings and put into standby mode.



YOU PRESS



YOU SEE

	CLASS AB
MENU	< EXIT
△	SETUP >
SELECT	< BACK
△	BRIGHT >
△	LOGO >
△	RESET >
SELECT	RES: NO
△	RES: YES
SELECT	Standby

MP-S201

W







## HANDCRAFTED IN DENMARK

AVA Group A/S (Vitus Audio)  
Hammershusvej 3L  
DK-7400 Herning  
Denmark

Phone: **+45 9626 8046**  
e-mail: **[sales@avagroup.nu](mailto:sales@avagroup.nu)**

  
**VITUS AUDIO**

Downloaded from [www.linephaze.com](http://www.linephaze.com)

- Find specs, manuals and used listings across thousands of audio products.