



AONIC 50 Gen 2

Wireless Headphones

Manual for Shure AONIC 50 Gen2 wireless noise-cancelling headphones (Model: SBH50G2). Find how to pair with Bluetooth, specifications, and troubleshooting.
Version: 1.6 (2025-H)

Table of Contents

AONIC 50 Gen 2 Wireless Headphones	3	Create Custom Presets	14
Bluetooth® Pairing	3	Adjust EQ	15
Multipoint pairing	3	Update Firmware for Shure AONIC Products	15
General Description	4	Care and Maintenance	16
Features	4	Frequently Asked Questions - FAQ	16
Using the Buttons	4	Storage	16
LED indicator	7	Accessories	16
Create a Wired Connection	8	Furnished Accessories	16
Specifications	8	Replacement Parts	16
ShurePlus PLAY Mobile Listening App	9	SAFETY PRECAUTIONS	16
About the ShurePlus PLAY App	10	WARNING FOR ALL EARPHONES!	17
AONIC 50 and PLAY App Sound Processing	10	SAFETY PRECAUTIONS	17
Environment Mode	10	WARNING	17
Active Noise Cancellation	11	CAUTION	17
Spatializer	11	IMPORTANT SAFETY INSTRUCTIONS	17
Listen to Hi-Res Files	11	For Products That Use Bluetooth	18
Mic Selection with a Computer	12	CAUTION	18
Auto Power Off	12	WARNING	18
Customize the ANC Switch	12	Certifications	19
Use EQ Presets	13	LIMITED WARRANTY	19

AONIC 50 Gen 2 Wireless Headphones

Bluetooth® Pairing

Headphones automatically enter pairing mode when you power them on the first time or when they have not been previously paired with this audio source.

1. From your audio source, select "Shure AONIC 50"
2. When successfully paired, you hear "Connected"

Headphones automatically pair with previously paired devices when you power them on. After a few seconds you will hear "Connected."

Manual pairing

1. Turn off the headphones
2. Press and hold the power button for 5 seconds
3. When you hear "Bluetooth pairing mode," release the button
4. From your audio source, select "Shure AONIC 50"
5. When successfully paired, you hear "Connected"

Note: If the pairing fails on the first attempt, repeat the process from the beginning.

To customize the listening features of your device, download the free ShurePlus™ PLAY app for iOS and Android.

Multipoint pairing

AONIC 50 headphones support Bluetooth multipoint pairing which enables the headphones to be connected to two devices at the same time. AONIC 50 will remain connected to both devices and receive inputs alternately.

If you are having difficulty with your AONIC 50 headphones and multipoint pairing, follow these steps:

1. Clear the AONIC 50's paired devices list (PDL) from the PLAY app
2. Clear the AONIC 50 from any previously paired devices
3. Power off the AONIC 50 headphones
4. Press and hold the AONIC 50 power button for 5 seconds
5. When you hear "Bluetooth pairing mode," release the button
6. Select "Shure AONIC 50" on the first mobile device
7. When successfully paired, you hear "Connected"
8. Disable Bluetooth on that mobile device
9. Power off the AONIC 50 headphones
10. Press and hold the AONIC 50 power button for 5 seconds to enter Bluetooth pairing mode again
11. Connect to other device
12. Turn on Bluetooth on the first cellular phone and select "Shure AONIC 50" in settings

You will not hear a "Connected" prompt but you will see that the headphones are connected to both of the devices.

Use the ShurePlus PLAY app to select how you want the audio to work in multipoint pairing:

- **Static** - Your current audio connection is unaffected if a second audio source begins to play.

- Dynamic - Your audio connection switches to the most recently played audio source.

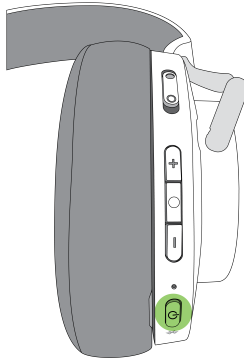
General Description

Engineered from decades of stage and studio experience, the second generation of the AONIC 50 Wireless Noise Cancelling Headphones deliver premium, high-fidelity audio with improved active noise cancelling technology. New Spatialized Audio takes your listening experience outside of your headphones to a whole new level by replicating the experience of listening through high-end speakers. A modern “all-black” design and up to 45 hours of battery life keep the music going in comfort and style, while customizable EQ and environment mode provide a personalized, unparalleled audio experience.

Features

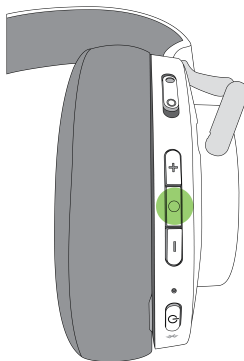
- Premium, studio-quality sound through custom-engineered 50mm dynamic drivers. Developed from decades of professional experience made for critical listeners.
- Spatialized Audio technology uses a proprietary algorithm to enhance the depth of your listening experience by widening the sound stage without introducing unnatural artifacts. Available in three unique modes - Music, Cinema, or Podcast. Music mode replicates listening through high-end speakers in a room and maintains the original integrity of the track. Cinema mode enhances low-frequency response and clarity of speech for a movie theater experience. Podcast mode brings the voice of your favorite speakers close to your ears.
- New Hybrid Active Noise Cancelling (ANC) technology blocks out distractions for a truly immersive and natural listening experience improved over the prior generation. Using microphones inside and outside of the earcup, the second generation ANC allows you to control how much (or how little) of the outside world you hear. Featuring four selectable modes (Light, Moderate, Max and MaxAware), the new MaxAware setting allows you to block unwanted noise while still maintaining awareness of your surroundings - great for conversations on-the-go.
- Environment mode allows you to hear the outside world with the flip of a switch. Refine the ambience settings via an adjustable slider in the ShurePlus™ PLAY app.
- Up to 45 hours battery life with quick charge capabilities, more than doubling runtime from the prior generation. Fifteen minutes of charge provides 5 hours of use.
- Customizable EQ. Choose from multiple presets, or create your own using the free ShurePlus™ PLAY app. Saves directly to your headphones for a seamless audio experience across other apps and devices.
- Long-wearing comfort and durability in a patented design built to last. Folds flat in a new zippered carrying case designed for portability.
- Customizable fingertip controls provide quick access to answer calls, adjust volume, pause music or access default voice assistant with the push of a button. Assign your preferred features including Spatializer, EQ or ANC settings directly on the headphone for advanced control.
- Premium communication with clear call quality through beamforming microphone technology and proprietary automatic gain control (AGC) settings. Utilizing 6 microphones, the precision-engineered system automatically adjusts settings to avoid surrounding noise, offering unmatched quality for video and phone calls. Hear and be heard clearly.
- Bluetooth® 5 wireless technology with a class 1 transmitter delivers enhanced stability with a range of up to 100 meters (320 feet). Pairs to phones, tablets and laptops.
- Premium headphone amplifier and support for multiple codecs including Qualcomm® aptX™, aptX™ HD, aptX™ Adaptive, AAC, SBC and Sony LDAC. Featuring Snapdragon Sound™ technology.
- High-Resolution USB Streaming up to 32-bit/384 kHz for an unmatched wired listening experience. Connect to wired sources with included 3.5mm analog audio cable or USB-C digital input for charging and High-Resolution streaming audio.
- ShurePlus™ PLAY app allows you to customize your preferences and control parametric EQ, noise cancellation, Spatializer and Environment Mode settings. Free to download for iOS and Android.

Using the Buttons



Power button

Power on	Press and hold, 2 seconds
Power off	Press and hold, 2 seconds
Pair Bluetooth	<ol style="list-style-type: none">1. Turn off the headphones2. Press and hold, 5 seconds
Check battery status	Double press (audible status notification)
Reset paired devices list	<ol style="list-style-type: none">1. Turn off the headphones and plug into a charger2. Press and hold, 7 seconds

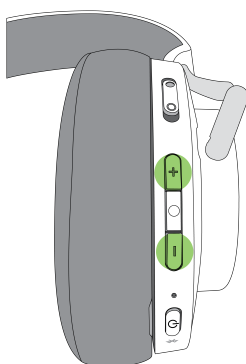


Center button

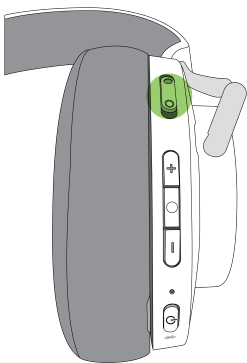
Music	
Play/Pause	Press once
Next track	Press two times
Restart track	Press three times after at least 6 seconds of music
Previous track	Press three times
Activate voice assistant	Press and hold, 2 seconds
Phone	
Answer a call	Press once
End a call	Press and hold, 1 second
Mute	Press two times Important: You must turn on the Mute Reminder under Prompts & Tones to use the mute feature.
Decline a call	Press and hold, 2 seconds
Hold/Answer a 2nd call	Press three times

Note:

Earcup Mute Control--When you use the center button to mute a call, the mute status is reflected on the computer. Mute is also supported when using a mobile phone, but the phone display does not reflect the mute state. Use the ShurePlus PLAY app features, Call Light and Prompts & Tones Mute Reminder, to specify the types of mute alert you want.

**Side buttons**

Volume up	Press +
Volume down	Press -



Environment mode/ANC switch

Environment mode	Push switch up
No Environment mode or Active Noise Cancellation	Centered
Active Noise Cancellation	Push switch down

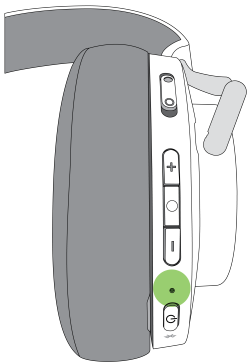
Note: You can customize the button controls in the ShurePlus™ PLAY app available for iOS and Android.

Hardware reset

If the buttons do not respond to repeated presses, you can perform a hardware reset to force a power off.

1. Press the +, -, and power buttons simultaneously to immediately power off the headphones. This does not reset any values you may have changed.
2. Power on the headphones.

LED indicator



LED Indicator

Bluetooth pairing	Alternating red and blue
Bluetooth connected	Blue for 2 seconds, then off
Bluetooth connection lost	Slow blinking blue
Low battery	Slow blinking red
Charging	Red

Create a Wired Connection

Instead of wireless connection, you can also set up a wired connection with your headphones. There are 2 different cable options:

USB-C

Use the USB-C cable to:

- Charge the headphones
- Connect to digital audio
- [Listen to Hi-Res audio files](#)

Note: Adjust charging settings and switch to Hi-Res mode in the PLAY app.

3.5 mm Audio Cable

- Connect to an analog audio port

Specifications

Model/Model:

MH36458

Transducer Type

Dynamic, Neodymium magnet

Driver Size

50 mm

Frequency Response

20 to 22,000 Hz

Sensitivity

@ 1 kHz

97.5 dB/mW

Impedance

@ 1 kHz

39 Ω

Maximum Audio Input Power

100 mW

Battery Life

up to 45 hours

Charging Requirements

The radio equipment requires the power delivered by the charger to be between: A minimum of 0.5 Watts, and a maximum of 2.5 Watts in order to achieve the maximum charging speed

Weight

334 g (11.8oz.)

Operating Temperature

0°C to 45°C (32°F to 113°F)

Storage Temperature

-10°C to 30°C (14°F to 86°F)

Antenna Type

Internal Monopole

Gain

+2.60 dBi

Operating Frequency

2402 MHz-2480 MHz

Modulation Type

FHSS

RF Output Power

+13.92 dBm (EIRP)

Supported Codecs

aptX, aptX HD, aptX Adaptive, aptX Voice, SBC, AAC, LDAC

ShurePlus PLAY Mobile Listening App

About the ShurePlus PLAY App

The ShurePlus PLAY Mobile Listening App is a high-resolution music player with advanced equalizer (EQ) controls. Unlock environment mode and ANC features on your Shure wireless headphones and True Wireless earphones by connecting to them in the app. Play uncompressed audio files with your iOS or Android mobile device, use built-in Shure EQ presets to enhance the sound, or create your own custom EQ presets.

Features

- Control, personalize, and adjust features and settings on your Shure wireless headphones and earphones.
- [Update firmware](#) on your Shure wireless headphones and earphones.
- Dial in your sound with the parametric graphic equalizer (EQ). Use presets or [customize your own EQ](#).
- Import and play both high-resolution and standard audio files.
- Create playlists and organize your music library by playlist, artist, album title, song title, genre, or composer.

AONIC 50 and PLAY App Sound Processing

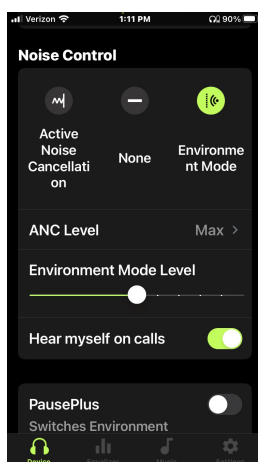
AONIC 50, Gen 2 headphones use all of your PLAY app DSP settings, regardless of how you are connected to the audio source and even after you have closed the app. The DSP occurs on the headphones and the app provides the access to customize those hardware settings.

Environment Mode

Environment mode allows you to hear the ambient noise around you. This is especially useful when you want to listen to music or are on a phone call, yet you still want to be aware of the sounds around you.

To use environment mode, push the vertical switch on the back of the right earcup to the up position.

In the ShurePlus PLAY app, you can adjust the environment mode across eleven levels:



Hear Myself on Calls

The **Hear myself on calls** setting allows you to hear your own voice on phone calls at a volume based on your Environment Mode setting. When switched off, the mics in the headphones still pick up your voice for phone calls, it's just that you are not able to hear yourself.

Active Noise Cancellation

Active Noise Cancellation (ANC) allows you to suppress some or all of the noise around you. This is especially useful when traveling where road noise in a car, bus, or train, or jet noise in an airplane can force you to increase the volume.

To use ANC, push the vertical switch on the back of the right earcup to the down position.

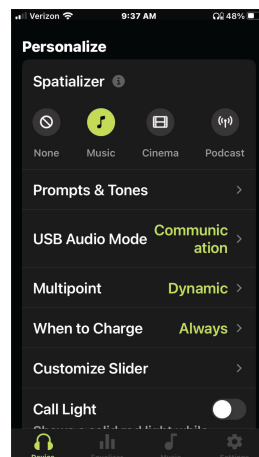
In the ShurePlus PLAY app, you can adjust the ANC between four levels of noise cancellation:

- Light
- Moderate
- Max
- MaxAware

Spatializer

The Spatializer uses digital processing to make it sound like you're in a larger setting using a pair of loudspeakers. The Spatializer options are:

- None - no change
- Music - the audio sounds like you're in a recording studio
- Cinema - the audio sounds like you're in a theater
- Podcast - the audio sounds like you're in the room with the podcasters



Listen to Hi-Res Files

AONIC 50, Gen 2 headphones support the Hi-Res streaming playback of [supported audio file formats](#) over USB for the ultimate audiophile listening experience. Access the feature through the PLAY app by going to Device > USB Audio Mode > Hi-Res Listening.

Hi-Res listening supports playback in 16-, 24-, and 32-bit depths, and the sample rates: 48, 96, 192, and 384. The 44.1 sample rate (and multiples of that sample rate) are not supported.

Note: The following features are also not supported in USB Hi-Res Listening mode:

- Environment Mode/Active Noise Cancellation
- Spatializer
- Switch customization
- Any EQ feature in the PLAY app
- Your headphone mic

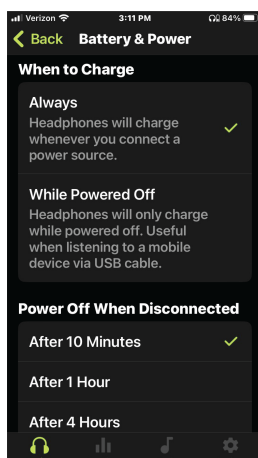
Mic Selection with a Computer

When using AONIC 50, Gen 2 headphones with a computer connected through a USB cable, use Device Manager > Audio inputs and outputs to specify

- Headset - to use the mics in the AONIC 50
- Headphones - to use a third-party mic

USB Charging

The USB cable always recharges the battery in the headphones, regardless of USB mode. If you are using a mobile device with a USB cord and are worried about draining your battery, you can control charging in the PLAY app under When to Charge.



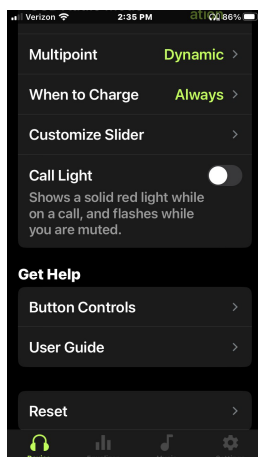
Auto Power Off

You can configure the Auto Power Off feature in the PLAY app to turn off your headphones when not in use:

1. Select When to Charge
2. Choose the auto power off time in Power Off When Disconnected

Customize the ANC Switch

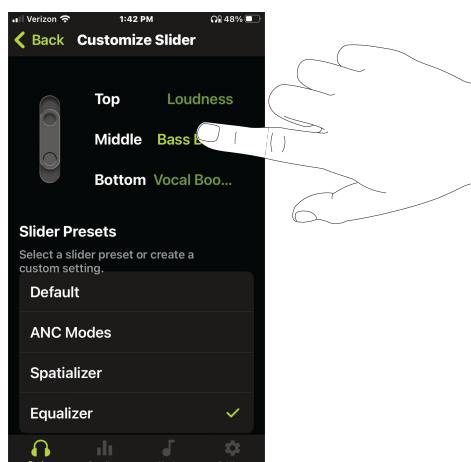
In the PLAY app, you can customize the ANC switch to provide an enhanced listening experience. Select Customize Slider to set the slider to switch between the default, ANC modes, Spatializer settings, or Equalizer presets:



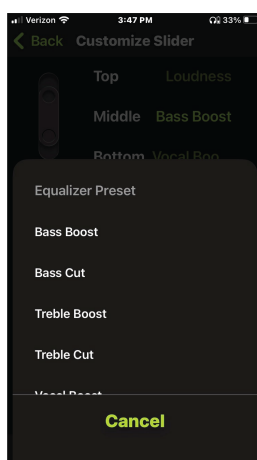
Customize EQ Settings for the Slider

To set the slider to different EQ presets, including custom presets:

1. Select the slider position you want to change



2. Choose a preset.



Use EQ Presets

Use presets to quickly access common listening scenarios. 7 selectable 4-band presets optimize settings for gain, equalization, and compression. Play a song and find the preset suits the song best. Then adjust levels as needed.

Preset	Application
Bass Boost	Increase low frequencies
Bass Cut	Decrease low frequencies
Treble Boost	Increase high frequencies
Treble Cut	Decrease high frequencies
Vocal Boost	Increase vocal clarity by emphasizing the vocal range

Preset	Application
De-ess	Decrease vocal hiss/ sibilance in speech
Loudness	Clarity for listening at low volume. Both the bass and treble frequencies are boosted to make the overall sound feel louder.

Create Custom Presets

On the manual presets page, you can adjust the:

- **Band:** Choose from a low shelf band, 2 parametric bands, or a high shelf band to target certain ranges in the frequency response.
- **Frequency:** Select the center frequency of the filter you want to cut or boost.
- **Gain:** Adjust the level for a specific filter.
- **Bandwidth or Q:** Adjust the range of frequencies affected by the filter. The value is represented in octaves.

Add New Preset

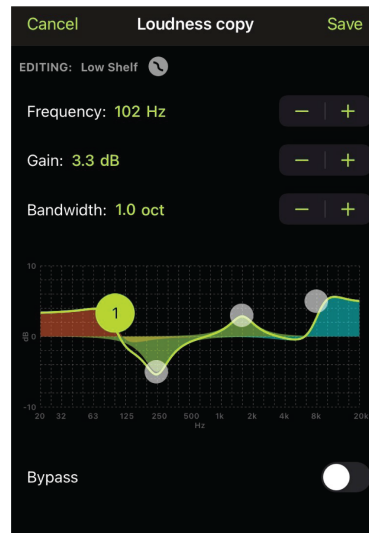
1. Scroll down to tap Add New Preset or tap Manual. New presets start out flat.
2. Adjust your frequency, gain, and bandwidth parameters. There are three ways to adjust your equalizer.
 - Tap the values to type in a specific number.
 - Tap the - or + to adjust in larger increments.
 - Tap, drag, or pinch the numbered circles for bigger changes.
3. Tap Save to name and save your new custom preset. Custom presets will show up after the list of Shure presets.

Duplicate a Preset

You can duplicate both Shure and custom presets. Duplicating a preset is convenient if you like the way a preset sounds but you want to make and keep adjustments to the sound.

1. Start by selecting an already existing preset.
2. Tap the More Options 3 dots and select Duplicate.
3. Scroll down to find your duplicate preset in the list of custom presets.
4. Tap the More Options 3 dots and select Edit.
5. Adjust your frequency, gain, and bandwidth parameters. Type in a specific number. Tap - or + to adjust in small increments. Or manually tap and drag the numbered circles for larger changes.
6. Tap Save to save your new custom preset.

Adjust EQ



Select and adjust frequency, gain, and bandwidth in the equalizer.

How to Use the Shure In-App Equalizer

You can use the 4-band parametric equalizer (EQ) to adjust and fine-tune independent frequency ranges and precisely shape the frequency response. EQ changes will be saved to the app or your connected Shure AONIC or Shure True Wireless device.

Note: For a flat, unchanged frequency response, turn the equalizer off.

Apply EQ to Your AONIC Device

When compatible Shure AONIC headphones or earphones are connected to the PLAY app, the EQ changes are saved to your device, even after you close the app.

1. Connect your AONIC device to the PLAY app and wait for the device's properties to load.
2. Go to the Equalizer tab and turn it on.

Apply EQ to Music Tracks within ShurePlus PLAY

If you don't connect AONIC devices, you can still apply in-app EQ to music files you've downloaded to the app. The EQ only applies while you're listening to these files in the PLAY app.

To apply EQ, go to the Equalizer tab and turn it on.

Update Firmware for Shure AONIC Products

For additional features and design enhancements, connect your AONIC product to a mobile device running the ShurePlus PLAY app, available for [Android](#) and [iOS](#).

1. Turn on Bluetooth and pair the AONIC product to your mobile device.
2. Open the PLAY app.
3. Updates appear on the home screen or the settings screen. Tap to update.
 - To update, you need **at least 50% battery charge** on the AONIC product and your mobile device.
 - Firmware downloads can take **up to 30 minutes**.
4. Wait until the "Update Completed" confirmation screen appears.
 - Do not turn off the AONIC product until the update completes.

Contact [Shure Service and Repair](#) if you experience any issues.

Care and Maintenance

To clean the headphones, use a soft, damp cloth.

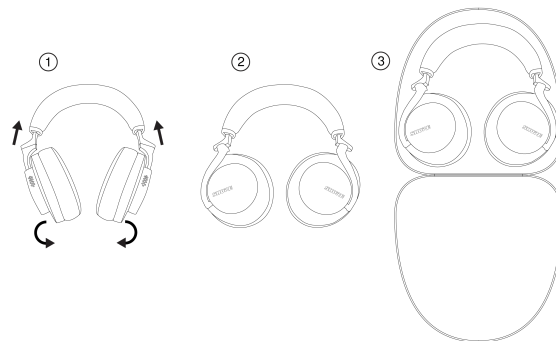
CAUTION: Do not use cleansers that contain solvents. Keep liquid and foreign objects out of the driver openings.

Frequently Asked Questions - FAQ

For more information, or to view other Frequently Asked Questions, visit the [Shure FAQ](#).

Storage

Store headphones in protective case when not in use.



Accessories

Furnished Accessories

REPL SBH2350 CASE ONLY	RPH-SBH2350-CASE
REPL USB-C to USB-A CABLE 1M	RPH-CABLE-USB
REPL 2.5-3.5MM CABLE 1.5M	RPH-CABLE-AUDIO

Replacement Parts

SBH2350 REPLACEMENT EARPADS (BLACK)	SBH2350-BK-PADS
-------------------------------------	-----------------

SAFETY PRECAUTIONS



Before using this product, please read and save the enclosed warnings and safety instructions.

WARNING FOR ALL EARPHONES!

Use, clean, and maintain earphones according to manufacturer's instructions.

SAFETY PRECAUTIONS

The possible results of incorrect use are marked by one of the two symbols—"WARNING" and "CAUTION"—depending on the imminence of the danger and the severity of the damage.

	WARNING: Ignoring these warnings may cause severe injury or death as a result of incorrect operation.
	CAUTION: Ignoring these cautions may cause moderate injury or property damage as a result of incorrect operation.

WARNING

- If water or other foreign objects enter the inside of the device, fire or electric shock may result.
- Do not attempt to modify this product. Doing so could result in personal injury and/or product failure.
- Do not use when a failure to hear your surroundings could be dangerous, such as while driving, or when biking, walking, or jogging where traffic is present and accidents could occur.
- Keep this product and its accessories out of reach of children. Handling or use by children may pose a risk of death or serious injury. Contains small parts and cords that may pose risk of choking or strangulation.
- Stop using the earphones and consult a medical professional if you experience irritation, excessive wax buildup, or other discomfort.

CAUTION

- Never disassemble or modify the device, as failures may result.
- Do not subject to extreme force and do not pull on the cable or failures may result.
- Keep the earphone dry and avoid exposure to extreme temperatures and humidity.
- If you are currently receiving ear treatment, consult your physician before using this device.



High sound pressure

Hearing damage risk

To prevent possible hearing damage, do not listen at high volume levels for long periods.

IMPORTANT SAFETY INSTRUCTIONS

1. READ these instructions.
2. KEEP these instructions.
3. HEED all warnings.
4. FOLLOW all instructions.

5. DO NOT use this apparatus near water.
6. CLEAN ONLY with dry cloth.
7. DO NOT block any ventilation openings. Install in accordance with the manufacturer's instructions.
8. DO NOT install near any heat sources such as radiators, heat registers, stoves, or other apparatus (including amplifiers) that produce heat.
9. PROTECT the power cord from being walked on or pinched, particularly at plugs, convenience receptacles, and the point where they exit from the apparatus.
10. ONLY USE attachments/accessories specified by the manufacturer.
11. UNPLUG this apparatus during lightning storms or when unused for long periods of time.

For Products That Use Bluetooth

WARNING

- Follow instructions from manufacturer.
- Product battery may explode or release toxic materials. Risk of fire or burns. Do not open, crush, modify, disassemble, heat above 140°F (60°C), or incinerate.
- Attention should be drawn to the environmental aspects of battery disposal.
- Product shall not be exposed to excessive heat such as sunshine, fire, or the like.
- Do NOT make unauthorized alterations to this product.

CAUTION

- Follow applicable laws regarding mobile phone and headphone use while driving.
- This product contains magnetic material. Consult your physician on whether this might affect your implantable medical device.
- Batteries (battery pack or batteries installed) shall not be exposed to excessive heat such as sunshine, fire or the like
- Batteries (battery pack or batteries installed) shall not be crushed or cut
- Batteries (battery pack or batteries installed) shall not be subjected to extremely low air pressure
- Risk of fire or explosion if the battery is replaced by an incorrect type

CAUTION

- Never disassemble or modify the device, as failures may result.
- Do not subject to extreme force and do not pull on the cable or failures may result.
- Keep the product dry and avoid exposure to extreme temperatures and humidity.

WARNING

- If water or other foreign objects enter the inside of the device, fire or electric shock may result.
- Do not attempt to modify this product. Doing so could result in personal injury and/or product failure.

Note: Battery replacement to be performed only by Shure authorized service personnel.

Changes or modifications not expressly approved by the party responsible for compliance could void the user's authority to operate the equipment.

Note: Testing is based on the use of supplied and recommended cable types. The use of other than shielded (screened) cable types may degrade EMC performance.

NCC Notice

低功率射頻器材技術規範

取得審驗證明之低功率射頻器材，非經核准，公司、商號或使用者均不得擅自變更頻率、加大功率或變更原設計之特性及功能。低功率射頻器材之使用不得影響飛航安全及干擾合法通信；經發現有干擾現象時，應立即停用，並改善至無干擾時方得繼續使用。前述合法通信，指依電信管理法規定作業之無線電通信。低功率射頻器材須忍受合法通信或工業、科學及醫療用電波輻射性電機設備之干擾。

Certifications

Visit www.shure.com for the latest regulatory and compliance information.

Note: Testing is based on the use of supplied and recommended cable types. The use of other than shielded (screened) cable types may degrade EMC performance.

This product meets the Essential Requirements of all relevant European directives and is eligible for CE marking.

CE Notice

Hereby, Shure Incorporated declares that this product with CE Marking has been determined to be in compliance with European Union requirements.

The full text of the EU declaration of conformity is available at the following site: <https://www.shure.com/en-EU/support/declarations-of-conformity>.

UKCA Notice

Hereby, Shure Incorporated declares that this product with UKCA Marking has been determined to be in compliance with UK-CA requirements.

The full text of the UK declaration of conformity is available at the following site: <https://www.shure.com/en-GB/support/declarations-of-conformity>.

LIMITED WARRANTY

Shure Incorporated ("Shure") hereby warrants to the original consumer purchaser only that, except as otherwise specified below, this product will be free in normal use of any defects in materials and workmanship for a period of two (2) years from the consumer's original date of purchase directly from Shure or from a Shure-authorized reseller.

Any rechargeable batteries contained in or packaged with this product are so warranted for a period of one (1) year from the consumer's original date of purchase. However, rechargeable batteries are consumable and their capacity will be reduced over time based on temperature, amount of time in storage, charging cycles, and other factors; hence reduction in battery capacity does not constitute a defect in material or workmanship.

At its sole option, Shure will repair or replace the defective product and promptly return it to you. In order for this warranty to be valid, the consumer must, at the time the product is returned, provide proof of purchase in the form of the original purchase receipt directly from Shure or from a Shure-authorized reseller. If Shure elects to replace the defective product, then Shure reserves the right to replace the defective product with another product of the same model or a model of at least comparable quality and features in Shure's sole determination.

If you believe this product is defective within the warranty period, carefully repack the unit, insure it and return it with proof of purchase, postage prepaid, to Shure Incorporated, Attention: Service Department, at the address below.

Outside of the United States, return the product to your dealer or Authorized Service Center. Addresses are listed on www.Shure.com or can be obtained by contacting Shure at the address listed below.

This warranty is not transferable. This warranty does not apply in cases of abuse or misuse of the product, use contrary to Shure's instruction, ordinary wear and tear, an act of God, negligent use, purchase from a party other than Shure or a Shure-authorized reseller, unauthorized repair, or modification of the product.

ALL IMPLIED WARRANTIES OF MERCHANTABILITY OR FITNESS FOR A PARTICULAR PURPOSE ARE HEREBY DISCLAIMED TO THE EXTENT PERMITTED UNDER APPLICABLE LAWS AND, TO THE EXTENT NOT PERMITTED, ARE HEREBY LIMITED TO THE DURATION AND TERMS OF THIS WARRANTY. SHURE ALSO HEREBY DISCLAIMS ALL LIABILITY FOR INCIDENTAL, SPECIAL, OR CONSEQUENTIAL DAMAGES.

Some states do not allow limitations on how long an implied warranty lasts, or the exclusion or limitation of incidental or consequential damages, so the above limitation may not apply to you. This warranty gives you specific legal rights, and you may have other rights which vary from state to state.

This warranty does not restrict the rights of the consumer mandated under applicable laws.

THIS WARRANTY SUPERSEDES ALL OTHER WARRANTIES THAT ARE ASSOCIATED OR INCLUDED WITH THIS PRODUCT, EXCEPT THAT ANY SOFTWARE CONTAINED IN OR PACKAGED WITH THIS PRODUCT IS EXCLUDED FROM THIS WARRANTY AND INSTEAD SHALL BE COVERED BY THE WARRANTY, IF ANY, PROVIDED IN SHURE'S END USER LICENSE AGREEMENT ACCOMPANYING SUCH SOFTWARE.