



X8 Special Edition

Mass loaded high-end turntable

Colour options: ●

- **NEW** special metallic edition
- **NEW** pre-adjusted Ortofon Quintet Black
- Heavy mass loaded 15 kg belt drive turntable
- Pro-Ject 9cc Evolution carbon tonearm
- Heavy MDF chassis
- Precision balanced damped 5,1 kg aluminium platter
- Inverted bearing with ceramic tip, magnetic support
- Electronic speed control 33/45 rpm
- Inverted cardanic tonearm bearings; four stainless steel tips mounted in ABEC 7 quality ball bearings
- Height-adjustable metal feet with TPE damping
- Premium 5P semi-symmetrical RCA phono cable
- True Balanced 5P XLR cable available separately
- Dust cover included
- Handmade in Europe

Speed: 33 / 45 rpm (electronic speed change)

Included phono cable: Connect it E 5P -> RCA, 1.23m

Aluminium feet: Height adjustable & TPE damped

Platter: massive 5,1 kg lathed aluminium

Platter bearing: inverted ceramic ball, magnetic support

Speed drift: 33: $\pm 0,11\%$; 45: $\pm 0,09\%$

Wow & flutter: 33: $\pm 0,11\%$; 45: $\pm 0,10\%$

Rumble: 73dB

Tonearm: 9" one-piece carbon-fibre tonearm

Effective arm length / mass: 9" (230 mm) / 8,5 g

Overhang: 18 mm

Incl. accessories: Dust cover, 7" single adapter, felt mat

Power supply: 15V / 0,8A DC

Power consumption: 5W / 0,3 W standby mode

Dimensions lid closed: 465 x 150 x 350 mm (W x H x D)

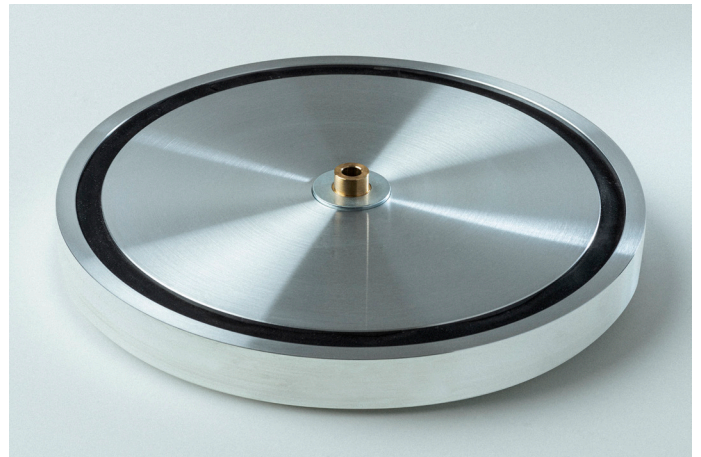
Dimensions lid opened: 465 x 415 x 420 mm (W x H x D)

Weight: 15 kg

Mass loaded high-end turntable with features from X9/X10

The X8 turntable is a true high-end solution with major technical features adapted from the Xtension 9 and 10.

For the new sensationally low price you get the heavy, TPE damped mass-loaded platter, which is precision lathed and balanced out of a single piece of aluminium. It is supported by a neodymium magnet which decreases the load on the bearing. Considering the massively heavy platter, this leads to a smoothly rotating base for your vinyls and perfect speed stability.



The massive MDF chassis and the top of the line Pro-Ject 9cc EVO carbon tonearm have been ported over to the X8 as well.

The major differences to the Xtension 9 and 10 are found in the top of the main platter and the magnetic feet. Instead of the glued-on vinyl top on the platter we went back to the use of slip mats. The X8 comes with our standard felt mat. On the Xtension 9 and 10 you cannot really play around with using different mats due to the vinyl top. This customizability comes back on the X8 and offers a few more options to tailor the sound to your liking.



The new feet are still made out of aluminium and are still height-adjustable. The magnetic suspension has been changed to a TPE damped technology, which is very effective in decoupling the X8 from the surface it is placed on. This is a great choice for a more budget orientated turntable as the new feet are faster and easier to set up than magnetic feet and also require less maintenance.

What's True Balanced?

For sure, we offer a moving coil cartridge at this price level, which also makes the turntable ready for balanced phono connections. The X8 comes with a 5pin output jack and with our standard semi-balanced Connect it E 5P -> RCA cable. By upgrading it to our fully balanced 5P to XLR version (available separately) and using a balanced phono stage, like our Phono Box DS3 B or any of our RS/RS2 phono stages, you are fully set-up for the **True Balanced** experience. This leads to increased dynamics, less noise and improved signal to noise ratios. You can imagine it like hearing parts of your music that literally were not there before.



Connect it Phono E 5P/RCA included:
Semi-balanced premium phono cable



Connect it Phono DS 5P/XLR: separately
available upgrade cable for True Balanced
phono connections