



# Juke Box E1 HiFi Set

The all-in-one set for vinyl starters!

MSRP 799€ (incl. VAT)

Wood veneer: 

High gloss color options:   

- Instant playback with super-easy setup
- Pre-adjusted tracking force & anti-skating force
- Electronic speed change
- BT and 1 line input + Line record output
- High contrast display on top
- Gold plated sockets
- Ortofon OM5e cartridge, pre-mounted
- Belt drive with silicone belt
- Special feet for effective decoupling
- Acrylic lid included
- IR remote control included
- 2-way bass reflex principle Speaker Box 5 E
- Lively dynamics & great transparency
- Magnetic speaker grills included
- High quality speaker cables (3m) included

## **Juke Box E1:**

**Power output:** 2 x 50 watts (4 ohms)

**Outputs:** Speakers, Line out (fixed), Phono out

**Inputs:** BT, 1x line (analogue)

**Speed:** 33, 45 (electronic speed change)

**Wow & flutter:** 33: +/-0,25%; 45: +/-0,23%

**Speed variance:** 33: +/-0,7%; 45: +/-0,6%

**Included accessory:** power supply, dust cover, remote control

**Dimensions:** 415 x 118 x 334mm (W x H x D)

**Weight:** 4,9 kg net (6,9 kg incl. packaging)

## **Speaker Box 5 E:**

**Frequency response:** 68Hz - 20kHz

**Dimensions:** 265 x 160 x 198 mm (H x B x T)

**Weight:** 4,04 kg each (9 kg incl. packaging 2 pcs.)

## **Connect it LS E Flex (3m):**

**Conductors:** 99.99% OFC copper

**Conductors:** 1,5mm<sup>2</sup> litz

**Weight:** 0,3 kg net

## All-in-one Plug & Play system!

Juke Box E1 is record player, phono stage, BT receiver, line pre-amplifier and power amplifier in one. Connect it to the mains, connect the included Speaker Box 5 E & you are ready to enjoy your favourite records.

If you thought that a starter turntable system is complicated to set up, Juke Box E1 HiFi Set proves the contrary. This good sounding belt-drive deck offers the fastest possible installation process because it comes pre-adjusted out of the box and offers superb sound quality. Tracking force and anti-skating of the turntable section are carefully pre-set. An acrylic dust cover is included.

With its full range of analogue and digital inputs, Juke Box E1 becomes one of the most versatile offerings on the market. The Line output even lets you relay the signal to a further amplifier, such as the Head Box, to become an even completer setup.

The built-in high contrast display always tells you what volume-setting you are listening at and what input currently is in use. So you always know what's happening. The 32-step digital potentiometer gives you perfect feedback and allows you to fine-tune to your desired volume. Pressing the volume knob switches between the available inputs. For further convenience, an infrared remote control is included!



## Why an all-in-one turntable?

Turntables and the analogue experience have gained in popularity the last few years & many people are searching for a true and simple plug-and-play solution. A lot of products have been introduced to the market which are supposed to end this search, though there have only been two solutions so far, which in our opinion still are not adequate to enjoy the full potential of analogue players.

The most popular probably is a plastic turntable with built-in speakers.

We believe that the only true solution to this request is our Juke Box E1. It offers built-in pre and power-amplifier, which allows you to place the speakers far away from each other to minimize the possibility of acoustic feedback and to create a real analogue stereo experience.



## Adjust the sound

With the supplied remote control you can not only switch inputs, turn it off/on and adjust the volume. You can also fine tune your played music. Press the Loudness button to use a default preset or modify the sound yourself with the Bass & Treble buttons.

## Handmade in Europe

The stylish CNC-machined composite fibre plinth, available in high gloss black, white or red finish, is carefully manufactured to ensure there are no hollow spaces inside. The lightweight and low friction 8,6" aluminium tonearm is optimized for the high quality Ortofon OM5e cartridge and will bring out its maximum potential.

The new ABS Polymer main platter is strengthened with purpose-designed ridges in order to create an ideal, anti-resonant platform for your vinyl.

To protect your Juke Box E1 from dust, you will also find an elegant acrylic dustcover with adjustable hinges in the box.

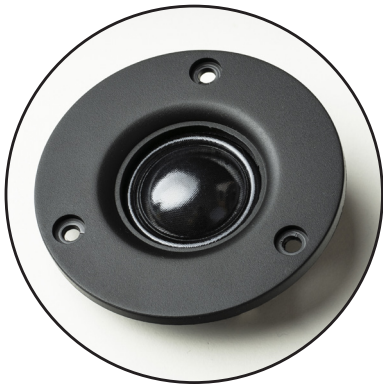




## A True Classic - Reborn

The Speaker Box 5 has been a **staple in our speaker line-up** and has been **in production for over 15 years**. The Speaker Box 5 E is the successor and our new version to this all time classic. A **superlative sounding small bookshelf** speaker.

- Well tuned and upbeat basslines
- Lively dynamics
- Surprisingly low coloration
- Good transparency and reasonable image depth
- Bass is fast and tuneful, this is what really matters!



**1" silk dome tweeter**

For transparent and smooth treble response.

### Heavy duty MDF cabinet

Extra dense acoustically optimized MDF. Allen screws fix the chassis **mechanically perfect** to the cabinet.



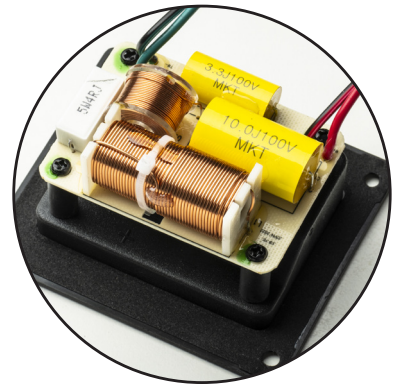
**5" fiber glass bass/mid woofer**

For higher **rigidity** and **stiffness**.

**Less distortion** at **high volumes**.

Huge **powerful magnet** for **ultra strong bass** drive.

Deep and firm bass response.



**2-way cross-over**

**Sophisticated** crossover network using **high quality** components on a **true PCB**.

**NOT** like often seen free air wiring with glued components.

**Reduces distortion** levels especially in **critical mid & high bands**.



