



INSTRUCTIONS FOR USE

Pro-Ject CD Box S3

Dear music lover,

thank you for purchasing a CD Box S3 from Pro-Ject Audio Systems. In order to achieve maximum performance and reliability you should study these instructions for use carefully.



Warning of a hazard for the user, the unit or possible misuse.



Important notice.

Caution! Laser diode, discs to avoid, safety instructions

This product contains a laser diode of higher class than 1. To ensure continued safety, do not remove any covers or attempt to gain access to the inside of the product. Refer all servicing to qualified personnel.

If a disc is cracked, chipped, warped, or otherwise damaged, don't risk to play it. You could end up damaging the unit. This player is designed for use with fully circular, full size CDs only. Use of shaped discs is not recommended. The manufacturer and the distributor disclaims all liability arising in connection with the use of damaged or shaped discs. AC outlet voltages vary from country to country. Before connecting to the mains, make sure that the voltage in your area meets the voltage requirements printed on the power supply. The power supply is used to disconnect the unit from the mains. Make sure that the power supply is easily accessible at all times. Never handle the device, the power supply while your hands are wet or damp. Avoid letting liquids enter the device or the power supply. Never place any item containing liquid, such as a flower vase on or near the device. Never spill any liquid on the device or the power supply. Never place any naked flame sources, such as lighted candles on or near the device. The product shall not be used in damp or wet locations, next to a bathtub, sink, swimming pool or any other similar conditions.



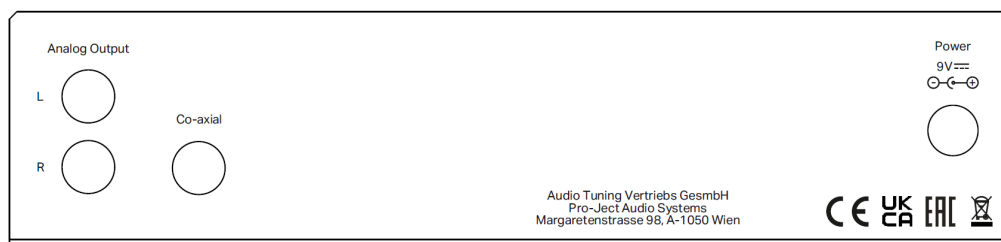
Shape and condition of data carriers

If a CD is broken, chipped or otherwise damaged, it should not be played as it may damage the unit.

The device is only designed to play round CDs with 12cm Ø. Playing self-burned CDs that do not comply with the Red Book standard may cause the unit to malfunction. The same applies to CDs with stickers or chamfered outer edges.



Connectors



Make all connections whilst the CD player is disconnected from the power supply. Take care to connect the left and right channels correctly. The right channel is usually marked red, the left channel black or white. Never use any other power supply than the one supplied with the unit.

Connection to the amplifier or DAC

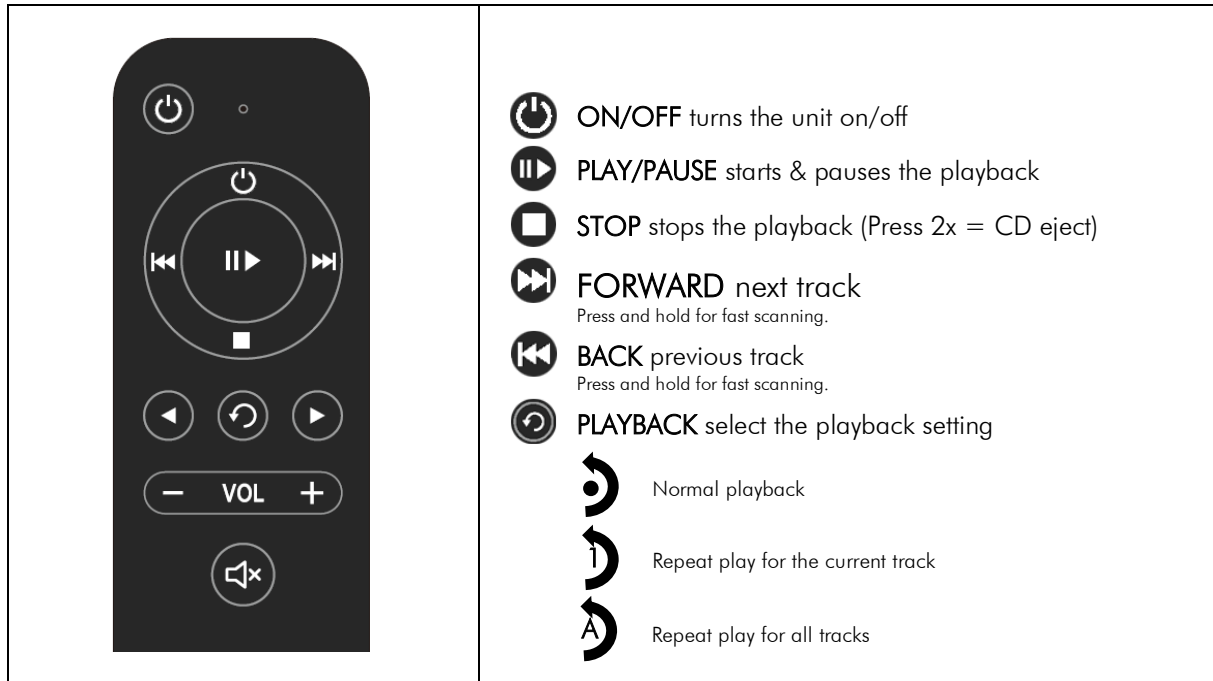
Connect the **Analog Output** socket to a line input (such as **AUX**) on your amplifier.

Connect the **Cox-axial digital Output** socket to an optical digital input on the D/A converter or amplifier equipped with digital input.

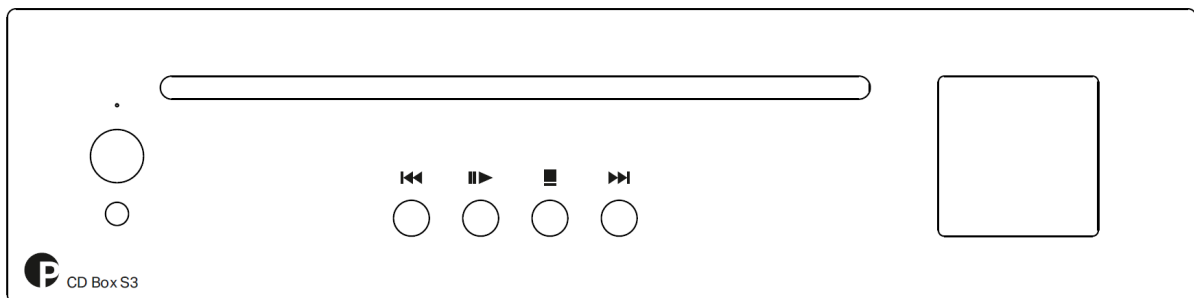
Mains power connection

Connect the low voltage plug from the power supply to the **Power 9V** socket before connecting the power supply to the mains.

Remote control



Front panel controls



Display color inversion: when turned on, press and hold the STOP button

Inserting and ejecting a disc

Switch the unit on from standby. Insert the disc into the slot, with the label side facing upwards. The slot-loading mechanism will load the disc automatically. The display shows the total number of tracks on the disc and the total duration of the disc.

A short press of the button ■ stops playback. Pressing ■ again, ejects the disc.

Play

▶▶ starts playback of the first track. The display shows the current track number, the elapsed time of the current track and the play icon.



In case of a damaged CD, it may take a little longer to process the errors and start playback or playback might not start at all. It is possible to terminate the process with the Stop button. The process is automatically terminated after 20 seconds.

Pause

⏸ pauses playback. The display shows the current track number, the elapsed time of the current track and the pause icon.

To resume playback press ⏸ again.

Stop

A short press of the button ■ stops playback. The display shows the total number of tracks on the disc, the total duration of the disc and the stop icon.

Stepping between tracks

Press the buttons ◀◀ (previous track) or ▶▶ (next track). The display shows the number of the tracks as you step, the elapsed time of the current track and the step icon. Press and hold buttons for fast scanning.

Replacing batteries

Proceed as follows:

- Unlock and slide open the battery case cover
- Replace the battery.
Make sure the battery is the right way round!
- Close the battery case cover.

Battery type: 2x AAA 1,5V



Do not dispose the batteries as ordinary domestic refuse. Please dispose your exhausted batteries at the appropriate collection sites - usually located at supermarkets and drugstores.

Technical parameters:

Supported formats:	Red Book CD-DA
Digital output:	1 x S/PDIF coaxial
Analog outputs:	1 x RCA
Output level:	2,0V Vrms / 0dBFS
Frequency response:	20Hz – 20kHz / $\pm 0,15$ dB
THD (analog output):	< 0,005% / 1kHz
THD (digital output):	< 0,001% / 1kHz
Noise floor:	> -120dB / 20Hz – 20kHz
Digital to Analog converter:	PCM5102
Outboard power supply:	9V/2A DC, suitable for your country
Power consumption:	250 – 1500mA DC, < 0,5W in standby
Replacement battery remote control:	2x AAA 1,5V
Dimensions W x H x D (D with sockets):	206 x 55 x 153 (160) mm
Weight:	1330g without power supply

Service

Should you encounter a problem which you are not able to alleviate or identify despite the above information, please contact your dealer for further advice. Only when the problem cannot be resolved there should the unit be sent to the responsible distributor in your country.

Warranty



The manufacturer accepts no responsibility for damage caused by not adhering to these instructions for use. Modification or change to any part of the product by unauthorized persons release the manufacturer from any liability over and above the lawful rights of the customer.

Copyright

Pro-Ject Audio Systems is a Registered Trademark of H. Lichtenegger.

This guide was produced by: Pro-Ject Audio Systems Copyright © 2023. All rights reserved.

The information was correct at the time of going to press. The manufacturer reserves the right to make changes to the technical specification without prior notice as deemed necessary to uphold the ongoing process of technical development.

Waste from Electrical and Electronic Equipment (WEEE): This directive mandates the collection and recycling of electronics and component materials in order to reduce the amount going to landfills. Outside North America, when the user decides to discard this product, it must be sent to a separate collection facility for recycling. Please contact your point of purchase for more details.