



INSTRUCTIONS FOR USE

Pro-Ject CD Box DS3

Dear music lover,
thank you for purchasing a Pro-Ject Audio Systems CD player.
In order to achieve maximum performance and reliability you should study these instructions for use carefully.



Warning of a hazard for the user, the unit or possible misuse.



Important notice.

Caution! Laser diode, discs to avoid, safety instructions

This product contains a laser diode. To ensure continued safety, do not remove any covers or attempt to gain access to the inside of the product. Refer all servicing to qualified personnel.

If a disc is cracked, chipped, warped, or otherwise damaged, don't risk to play it. You could end up damaging the unit. This player is designed for use with fully circular, full size CDs only. Use of shaped discs is not recommended. The manufacturer and the distributor disclaims all liability arising in connection with the use of damaged or shaped discs.



AC outlet voltages vary from country to country. Before connecting to the mains, make sure that the voltage in your area meets the voltage requirements printed on the power supply.

The power supply is used to disconnect the unit from the mains. Make sure that the power supply is easily accessible at all times. Never handle the device, the power supply while your hands are wet or damp.

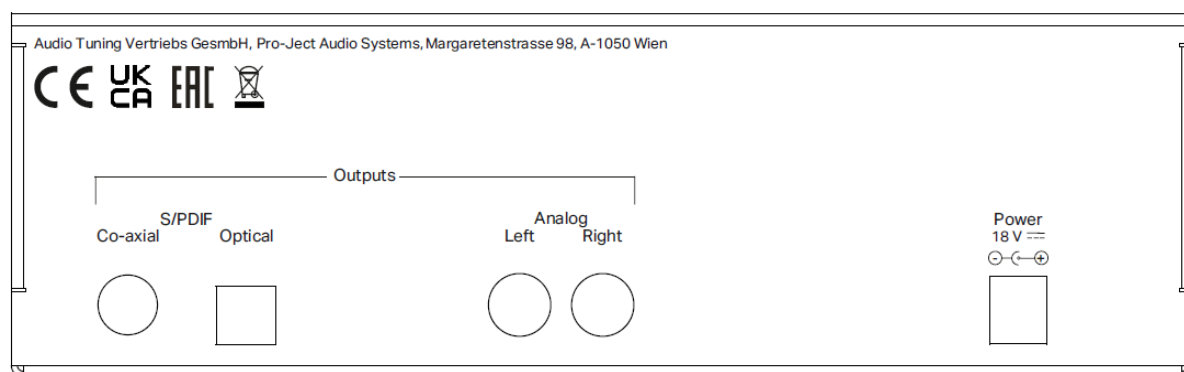
Avoid letting liquids enter the device or the power supply. Never place any item containing liquid, such as a flower vase on or near the device. Never spill any liquid on the device or the power supply. Never place any naked flame sources, such as lighted candles on or near the device. The product shall not be used in damp or wet locations, next to a bathtub, sink, swimming pool or any other similar conditions.

Shape and condition of data carriers



If a CD is broken, chipped or otherwise damaged, it should not be played as it may damage the unit. The device is only designed to play round CDs with 12cm Ø. Playing self-burned CDs that do not comply with the Red Book standard may cause the unit to malfunction. The same applies to CDs with stickers or chamfered outer edges.

Connectors



Make all connections whilst the CD player is disconnected from the power supply. Never use any other power supply than the one supplied with the unit.

Mains connection and switching the device on and off

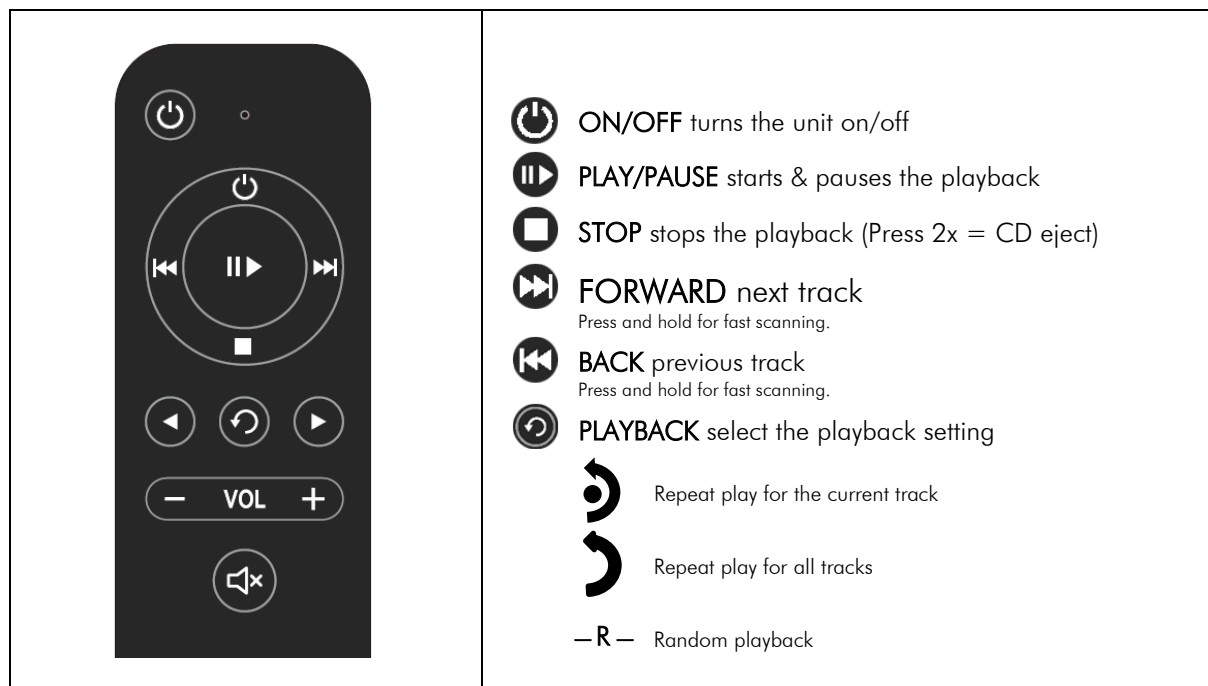
Connect the low voltage plug from the power supply to the **Power 18V** socket of the unit **before** connecting the power supply to the mains. The device can be switched on and off with the push button on the front.

Connection to the amplifier or DAC

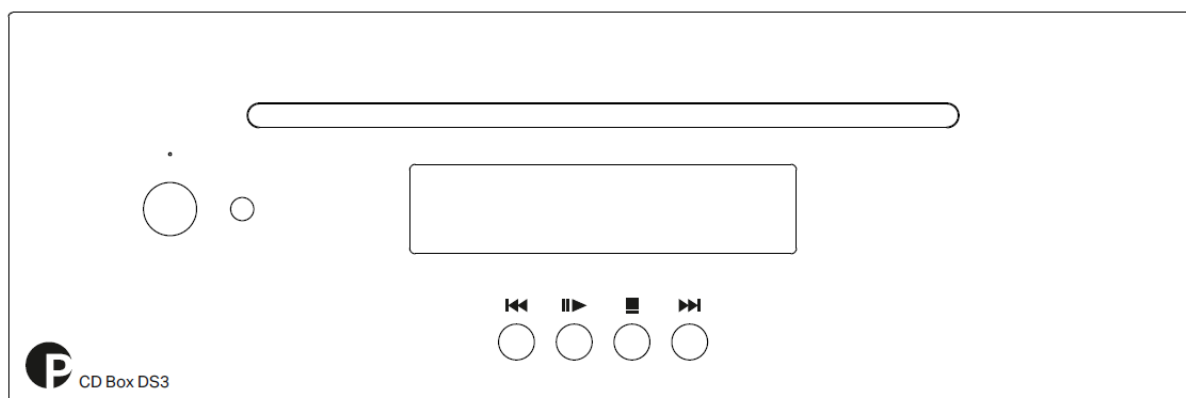
Connect the **Analog Output** socket to a line input (such as **AUX**) on your amplifier.

Connect the **Coaxial** or **Optical** socket to the digital input of a D/A converter or AV processor.

Remote control



Front panel controls



*Dimming the display: When playback is stopped, press and hold the **■** button & change the brightness by pressing the **▶▶** button.*

Inserting and ejecting a disc

Switch the unit on from standby. Insert the disc into the slot, with the label side facing upwards. The slot-loading mechanism will load the disc automatically. The display shows the total number of tracks on the disc and the total duration of the disc. Pressing **■** once stops playback, pressing the button again, ejects the disc.

Play

II► starts playback of the first track. The display shows the current track number, the elapsed time of the current track and the play icon.



In case of a damaged CD, it may take a little longer to process the errors and start playback or playback might not start at all. It is possible to terminate the process with the Stop button. The process is automatically terminated after 20 seconds.

Pause

II▮ pauses playback. The display shows the current track number, the elapsed time of the current track and the pause icon.

To resume playback press **II►** again.

Stop

A short press of the button **■** stops playback. The display shows the total number of tracks on the disc, the total duration of the disc and the stop icon.

Stepping between tracks

Press the buttons **◀◀** (previous track) or **▶▶** (next track).

Pressing **◀◀** while playback, the current track starts playing from the beginning.

The display shows the number of the tracks as you step, the elapsed time of the current track and the step icon.

Scanning through the disc

Press and hold the button **◀◀** (fast backward) or **▶▶** (fast forward) to scan through the disc. The display shows the current track number, the elapsed time of the current track and the scan icon.

Releasing **◀◀** or **▶▶** will take you back to playback.

Replacing batteries

Proceed as follows:

- Unlock and slide open the battery case cover
- Replace the battery.
Make sure the battery is the right way round !
- Close the battery case cover

Battery type: 2x AAA 1,5V



Do not dispose the batteries as ordinary domestic refuse. Please dispose your exhausted batteries at the appropriate collection sites - usually located at supermarkets and drugstores.

Universal remote control Control it DS/RS

Control it DS/RS is optionally available and provides a convenient control option for this and many other Project Box Design products.

Technical specifications Pro-Ject CD Box DS3

Supports:	Red Book CD-DA
Line-level output:	1 pair RCA
Digital outputs:	1 x optical Toslink®(S/PDIF) 1 x co-axial (S/PDIF)
Frequency response:	20Hz - 20kHz/ $\pm 0,15$ dB
Noise floor:	>105dB / 20Hz – 20kHz
THD (analog output):	<0,018%
THD (digital output):	<0,005%
Line Level Output voltage:	2 Vrms / 0dBFS
D/A-converter:	PCM1796
Outboard power supply:	18V/1.000mA DC, suitable for your country's mains supply
Power consumption:	300 - 600mA DC, <0,5W in standby
Replacement battery remote control:	2x AAA 1,5V
Dimensions W x H x D (D with sockets):	206 x 72 x 194 (200) mm
Weight:	1660 g without power supply

Service

Should you encounter a problem which you are not able to alleviate or identify, please contact your dealer for further advice. Only if the problem cannot be resolved there, the unit should be sent to the responsible distributor in your country.

Warranty



The manufacturer accepts no responsibility for damage caused by not adhering to these instructions for use. Modification or changes to any part of the product by unauthorized persons release the manufacturer from any liability over and above the lawful rights of the customer.

Copyright, trademarks

Pro-Ject Audio Systems is a registered Trademark of H. Lichtenegger.

This guide was produced by: Pro-Ject Audio Systems
Copyright © 2023. All rights reserved.

The information was correct at the time of going to press. The manufacturer reserves the right to make changes to the technical specification without prior notice as deemed necessary to uphold the ongoing process of technical development.

Toslink® is a registered trademark of Toshiba corporation.

Waste from Electrical and Electronic Equipment (WEEE): This directive mandates the collection and recycling of electronics and component materials in order to reduce the amount going to landfills. Outside North America, when the user decides to discard this product, it must be sent to a separate collection facility for recycling. Please contact your point of purchase for more details.