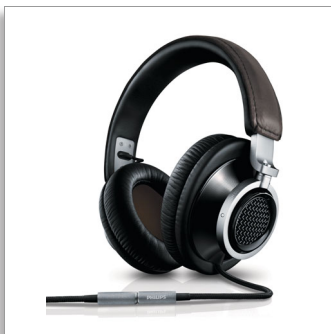




Philips Fidelio
over ear headband
headphones

- Fidelio
- Black



L1

High fidelity, premium quality. Wherever you go.

Fidelio L1 headphones combine the highest standards in sound and comfort for an authentic listening experience. Expertly engineered for natural sound as faithful to the original as possible. Exquisitely crafted for long-lasting comfort.

Tuned for clarity

- High-definition optimally vented neodymium speaker drivers
- Engineered aluminum earshells for acoustic precision
- Acoustic semi-open back architecture for natural sound
- Carefully tested drivers for the best balance in sound
- Speakers tilted to the ear's natural angle for clarity
- Frequency response tuned to discerning listeners' preference
- Excellent noise isolation and spacious listening experience

Finished for quality

- Premium materials including aluminum and fine leathers
- Oxygen-free, fabric-lined cable for a high quality signal

Crafted for comfort

- Memory foam earpads designed for an ergonomic fit

Equipped for convenience

- iPhone remote, mic, 6.3mm adapter and pouch

PHILIPS
Fidelio

Highlights

Vented neodymium drivers



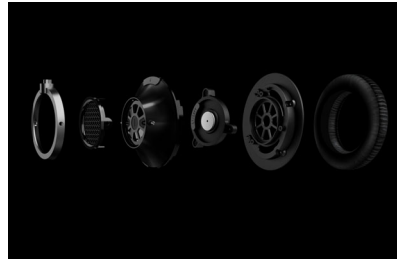
The neodymium drivers respond to all your music's dynamics. The design includes a vent in the centre which emphasises the middle and low frequencies, producing the acoustic energy that brings extended yet controlled bass and a transparent mid-range. The drivers also feature a light voice coil that gives the system nimble response to match the pace of your music and deliver high-definition sound.

Engineered aluminum earshells



Aluminum earshells selected for their strength reduce unwanted vibration and resonance. They are mounted on a layer of engineering plastics to make the headphones even more stable. As a result they dampen vibration as effectively as possible for accurate, incisive sound.

Pre-tilted driver



A pre-tilted driver matching the ear cup's natural angle directs the sound straight into the ear canal. This means much less of the coloration that can occur when sound reflects off the outer ear, together with a more realistic soundstage and enhanced comfort.

Tuned frequency response

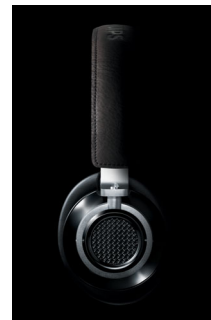
Our acoustics engineers have designed the Fidelio L1 to account for all the minute details that affect how listeners hear sound, such as how the ear reflects sound and resonates in response. We've also drawn on extensive research with discriminating listeners to discover the true, balanced sound characteristics they prefer. The results is that these headphones have been engineered to reproduce sound as faithful to the original as possible and attuned to modern recording styles.

Memory foam cushioning



Each material used for the Fidelio L1 has been carefully selected for longer listening comfort. Deluxe memory foam ear-pads provide an ergonomic fit. Not only does the foam mould itself perfectly to the shape of your ear, but it also forms a seal that preserves the best bass response and reduces unwanted outside sounds.

Semi-open back design



The semi-open back design combines the balanced, transparent sound of an open back with the deep bass and noise isolation expected from a fully closed back. It includes finely woven, acoustically resistant fabric built into the acoustic grilles for controlled noise isolation, minimal leakage and reduced ambient noise.

Specifications

Sound

- Frequency response: 12 - 25 000 Hz
- Impedance: 26 Ohm
- Sensitivity: 105 dB
- Maximum power input: 200 mW
- Distortion: < 0.1% THD
- Speaker diameter: 40 mm

Connectivity

- Cable Connection: Oxygen free cable (1.1m)

Accessories

- Made for Apple in-line remote
- 3.5mm audio cable
- Storage pouch
- Adapter plug: 3.5 - 6.3 mm

Packaging dimensions

- Packaging dimensions (W x H x D):
19.5 x 25 x 10.2 cm
- Packaging dimensions (W x H x D):
7.7 x 9.8 x 4.0 inch
- Nett weight: 0.364 kg
- Nett weight: 0.802 lb
- Gross weight: 0.927 kg
- Gross weight: 2.044 lb
- Tare weight: 0.563 kg
- Tare weight: 1.241 lb
- EAN: 69 23410 71156 1
- Number of products included: 1
- Packaging type: Carton
- Type of shelf placement: Both

Outer Carton

- Outer carton (L x W x H): 21.9 x 20.4 x 27 cm
- Outer carton (L x W x H): 8.6 x 8.0 x 10.6 inch
- Nett weight: 0.728 kg
- Nett weight: 1.605 lb
- Gross weight: 2.056 kg
- Gross weight: 4.533 lb
- Tare weight: 1.328 kg
- Tare weight: 2.928 lb
- GTIN: 1 69 23410 71156 8
- Number of consumer packagings: 2

iPhone compatibility

- Compatible with: iPhone 3GS, iPhone 4

iPod compatibility

- Compatible with: iPod classic 120GB, iPod classic 160GB, iPod nano 4th Generation, iPod nano 5th Generation, iPod nano 6th generation, iPod shuffle 3rd Generation, iPod shuffle 4th Generation, iPod touch 2nd generation, iPod touch 3rd generation, iPod touch 4th generation

iPad compatibility

- Compatible with: iPad, iPad 2

Product dimensions

- Product dimensions (W x H x D):
6.8 x 8.0 x 3.1 inch
- Product dimensions (W x H x D):
17.2 x 20.2 x 8 cm
- Weight: 0.2716 kg
- Weight: 0.599 lb



Issue date 2013-08-17

Version: 18.3.9

12 NC: 8670 000 81894
EAN: 69 23410 71156 1

© 2013 Koninklijke Philips N.V.
All Rights reserved.

Specifications are subject to change without notice.
Trademarks are the property of Koninklijke Philips N.V.
or their respective owners.

www.philips.com

