

LUXMAN

HEADPHONE AMPLIFIER
P-750u



Downloaded from www.linephaze.com

- Find specs, manuals and used listings across thousands of audio products.

To be better than the best,
this was LUXMAN's challenge when developing
the P-750u, a new flagship headphone amplifier.

The P-750u is a meticulously refined evolution of LUXMAN's P-700u,
itself a highly respected, industry standard, high-end headphone amplifier, revered by many headphone listeners.

Central to the design of this headphone amplifier is
LECUA (LUXMAN Electronically Controlled Ultimate Attenuator),
a high fidelity computer controlled attenuator which we feel is the ideal volume adjustment system.
The P-750u also features ODNF Version 4.0 (Only Distortion Negative Feedback),
a proprietary LUXMAN feedback circuit integral to this perfectly balanced headphone amplifier.

The addition of a 4-pin XLR balanced headphone output to the P-750u completes
the evolution by extending the choice of compatible headphones and elevating the listening experience
for even the most ardent headphone users to uncharted heights.



■ ODNF Version 4.0 – updated, innovative amplification feedback circuit

LUXMAN's ODNF (Only Distortion Negative Feedback) original amplification feedback circuit achieves a high-speed primary slew rate, ultra-wide bandwidth and low-level distortion by feeding back only the distorted elements of the audio signal from the output amplification circuit. The design of the P-750u has resulted in even lower output impedance and a higher signal-to-noise ratio, due to a paralleled first stage and a Darlington-equipped second stage amplification circuit. The P-750u features the very latest version of ODNF, Version 4.0, offering improved accuracy in detecting distortion by using a triple-paralleled input stage error detection circuit. The expression of emotion and the power of silence are thereby enhanced by accurately reproducing even the lowest level audio signals, whilst preserving the dynamic and fresh nature of the sound. The final stage of the P-750u's ODNF-equipped amplifier circuitry is a 4 channel, fully balanced output system. A Bridge Tied Load (BTL) output configuration is used for balanced headphones whilst a dual-paralleled configuration is used for unbalanced headphones, demonstrating the suitability of the P-750u for all kinds of headphones.

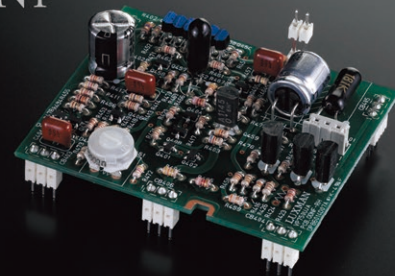
■ LUXMAN's LECUA computerized attenuator is a highly accurate sound volume adjustment system

During headphone playback, audio signals are instantaneously delivered to both ears. Issues caused by level deviation between left and right channels at low sound volumes or differences in sound quality over the volume range are difficult to solve using a conventional analog volume adjustment system. The design of the P-750u features a solid state (IC) circuit, achieving a significant reduction in size, together with the LECUA computerized attenuator, which we believe is the ideal level control system. The incredibly smooth volume control operation of the P-750u minimizes level deviation between the left and right channels at low volume and eliminates loss of sound quality at any volume setting. This multifunctional amplifier suppresses the deterioration of sound quality by offering three selectable levels of sensitivity, depending on the impedance and efficiency of the headphones, and by integrating left/right balance adjustment with LECUA.

■ BTL balanced drive and paralleled unbalanced drive

The P-750u is equipped with ODNF Version 4.0, the latest generation of LUXMAN's original high sound quality amplification feedback circuit on each of the four identical output channels. Utilizing a BTL balanced output configuration enables a great improvement in left-right separation, sound localisation and power supply regulation, whilst cross-modulation distortion is also significantly reduced. The listener can enjoy the maximum benefits of balanced connection headphones. When using unbalanced headphones, the four channel amplification circuitry is divided into 2 channels each for left and right, driving each in parallel, thereby doubling the output current supply capacity. This improves absolute driving force and intensifies sound reproduction with dynamic intonation. An enhanced sound stage can be enjoyed with a rich range and the superb detail that is characteristic of a balanced connection whilst maximising the performance of the headphones.

ODNF



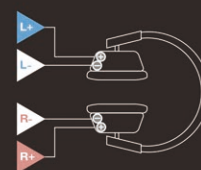
ODNF version 4.0 module

LECUA

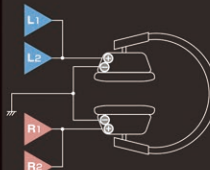


Highly accurate LECUA board

BTL Balanced drive
by balanced amps



Unbalanced drive
by parallel amps



4-pin XLR terminal

■ A choice of high quality output connections

The P-750u features a choice of headphone outputs including a standard stereo jack (unbalanced) output terminal, a stereo pair of balanced 3-pin XLR terminals with the addition of a 4-pin XLR balanced terminal for compatibility with high-end headphones.



3-step sensitivity selection

■ Control functions integrated with LECUA

In addition to the 3-step sensitivity selection, allowing the output sensitivity to be chosen according to various headphones, the P-750u also features a left-right balance adjustment control. Both functions are controlled by LECUA, a high quality computerized attenuator, to minimize the deterioration of sound quality over the volume control range.

■ Enhanced high capacity power supply

The design of the P-750u is enhanced further with the inclusion of a highly stable power supply circuit consisting of a highly regulated OI-core power transformer, two 10,000 μ F custom block capacitors in the power amplifier stage and two 3,300 μ F custom block capacitors in the pre-driver stage thus achieving immense power and stability.



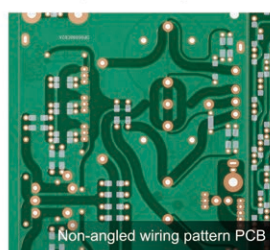
Custom-made block condensers of large capacity

■ Highly rigid chassis and a refined design

The dual design of the base chassis, constructed from 3mm sheet steel, maximises rigidity and makes the centre of gravity lower. A mirrored, rhodium plated logo plate on the front panel combines beautifully with the blaster white metallic cabinet for a truly refined finish.



Logo plate of mirror finish rhodium plating



Non-angled wiring pattern PCB

■ Original technologies

To realise a smooth, stress free signal transmission, LUXMAN's original Beeline construction is utilized. This allows the wiring and signal transmission to take the shortest optimal route (like the homing route of a bee). Our non-angled wiring pattern with straight and smoothly curved traces on the circuit board also contribute to the smooth passage of audio signals.

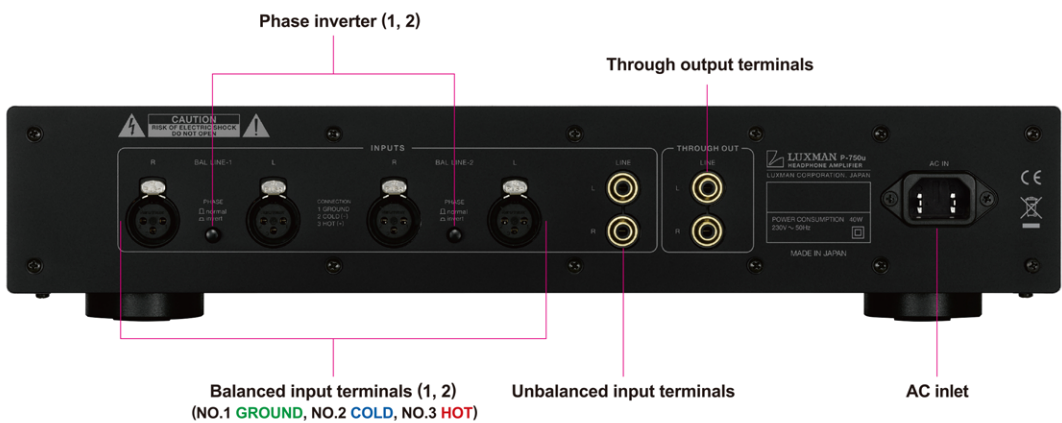
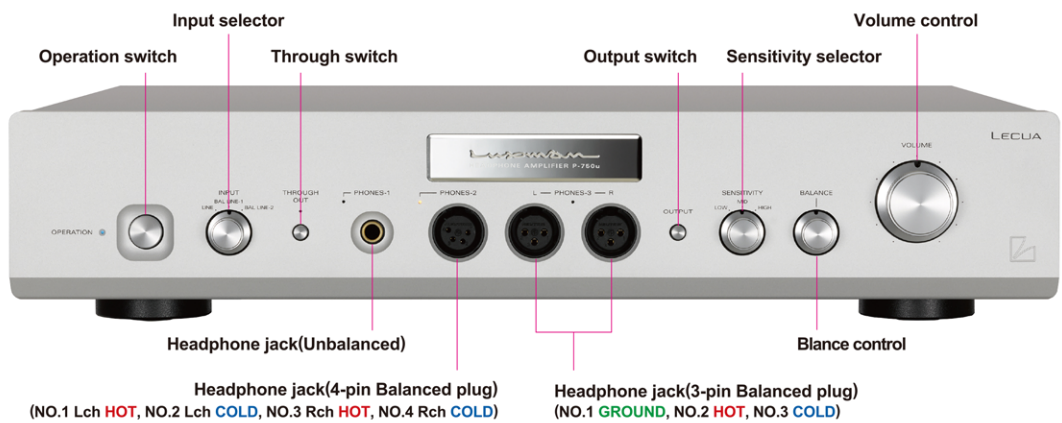


Gradation cast iron legs

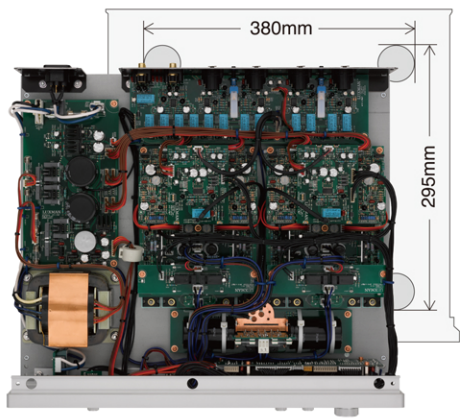
■ Customized legs

Gradation cast iron legs that are used for the LUXMAN 900 series separate amplifier have been customised for the P-750u, taking thorough countermeasures against vibration.

P-750u HEADPHONE AMPLIFIER



*Rear panel : European Model



Internal configuration

SPECIFICATIONS

Rated output	Unbalance : 4W + 4W (8Ω), 2W + 2W (16Ω) 1W + 1W (32Ω), 53mW + 53mW (600Ω) Balance : 8W + 8W (16Ω), 4W + 4W (32Ω) 213mW + 213mW (600Ω)
Input sensitivity/ input impedance	Unbalance : 1.0V/15kΩ Balance : 2.0V/40kΩ
Frequency response	20Hz to 20kHz (+0, -0.1dB) 10Hz to 170kHz (+0, -3.0dB)
Total harmonic distortion	Unbalance : 0.003% (1kHz) Balance : 0.002% (1kHz)
S/N ratio (IHF-A)	Unbalance: 113dB, Balance: 116dB
Power supply	230V~(50Hz) / 115V~(60Hz)
Power consumption	42W 27W (under no signal)
External dimensions	440(W) x 92(H) x 400(D) mm front side knob of 14mm and rear side terminal of 6mm included in depth
Net weight	13.3kg (main unit)
Accessories	Power cable

* Setting the phase inverter switch to the B position allows balance input terminal No 2 to change to **HOT**, and No. 3 to **COLD**.

Desktop revolution – a new definition of D/A converter

USB D/A CONVERTER **DA-150**



Advanced versatility.

A USB D/A Converter commanding the sound source and system

USB D/A CONVERTER **DA-250**



* Specifications and appearance are subject to change without notice. * The products listed in this catalog do not include line cables. Please purchase cables separately.

LUXMAN

LUXMAN CORPORATION, 1-3-1 Shinyokohama, Kouhoku-ku, Yokohama-shi, Kanagawa 222-0033, Japan
Tel: +81-45-470-6980 Fax: +81-45-470-6997 www.luxman.co.jp



Safety Cautions

To ensure correct use of this product,
read the "Owner's Manual" prior to use.
Failure to follow all safeguards can result