

# LUXMAN

INTEGRATED AMPLIFIER  
**L-595A** *Special Edition*



Downloaded from [www.linephaze.com](http://www.linephaze.com)

- Find specs, manuals and used listings across thousands of audio products.





A model beyond classic

A gem of a stereo integrated amplifier for discerning audiophiles



LUXMAN is celebrating its 95th anniversary and among our many components that have made names for themselves over the course of our history, our L-570 series pure Class A integrated amplifiers have a reputation that fascinates audio enthusiasts to this day. Our L-595A SPECIAL EDITION is a limited production model that faithfully replicates the appearance, sound quality and image after 30 years. It is outstanding among modern audio components, while retaining simple operability and featuring beautiful exterior details, such as aluminum direct selection switchgear with indicators, the volume level indicator light and a bold counterbore around the calibrated volume knob. The front panel has a delicate hairline finish contrasting with the lower section, crafted in black Alumite, creates a striking two-tone color scheme, like original L-570 models. The top plate also has a beautiful hairline finish to match the front panel and widened venting to improve heat dissipation. The amplifier section is equipped with ODNF-u, which supports a fresh and dense tonality with an overwhelming amount of musical detail. With its special exterior finish, industrial design and the latest circuitry, we hope the 300-unit (worldwide) special limited-edition L-595ASE will become highly sought after by audio enthusiasts and music lovers alike.

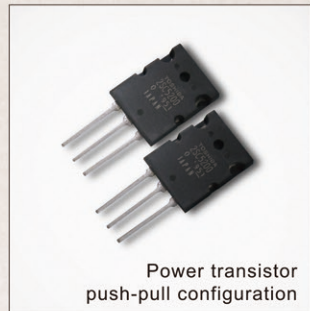
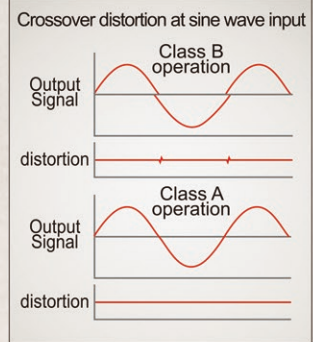




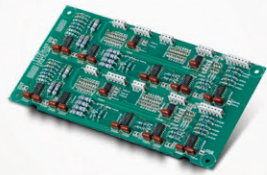
## Commitment to Pure Class A

### For irreplaceable musical expression

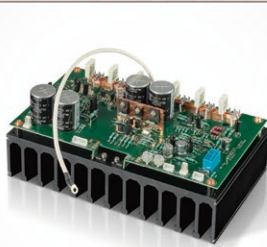
The L-595A SPECIAL EDITION operates in pure class A mode, eliminating crossover distortion during amplification. A rated output of 30W + 30W (8Ω) is generated by the power amplifier circuits. It's 3 stage Darlington equipped, triple paralleled push-pull configuration greatly improves S/N ratio and high-frequency distortion characteristics, bestowing a textural clarity and the drivability of a pre and power amplifier combination. The power supply section features a large, highly regulated power transformer with independent left and right channel high-capacity filter capacitors which combine to supply instantaneous power with great stability. And unique, vibration damped constructions are employed throughout. Large speaker relays with very low resistance achieve low impedance at the speaker terminals. All of these technologies contribute to achieve the finest level of musical expression expected from a pure class A product.



Power transistor push-pull configuration



Electronically controlled attenuator LEC UA



ODNF-u power amp block

### ODNF and LEC UA

#### Latest circuit

The L-595A SPECIAL EDITION incorporates the finest of LUXMAN's latest circuit technologies. Our original ODNF feedback circuit, which achieves the highest initial slew rate, has evolved into the latest ODNF-u version with improved error detection circuitry. The volume control section uses the new LEC UA1000 88-step electronically controlled attenuator, which minimizes sound quality deterioration at low levels, and a discrete buffer that increases the driving force of the preamplifier circuit. Copper-clad steel shielding protects the transmission path of delicate signals from external noise. The copper alloy RCA terminals have the conductivity of copper and hardness of brass.

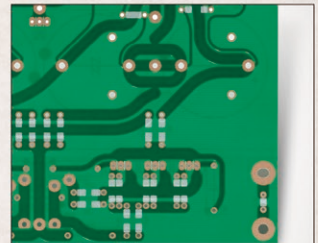
\*LEC UA : Luxman Electronically Controlled Ultimate Attenuator

\*ODNF : Only Distortion Negative Feedback

## Unique LUXMAN design details and knowhow

### Applying accumulated LUXMAN technologies developed over decades

Design methods and housing structures are major factors that affect sound quality and timbre. Our goal was to design levels of deep musicality for the L-595A SPECIAL EDITION. The joint input/output circuit board is peel-coated without resistant green film coating which can cause high-frequency noise components. Smooth, rounded trace rounded trace patterns connect points on the custom-made, gold plated peel-coat circuit board.



Smoothly rounded trace patterns on the circuit board

### A substantial and exceptional stereo integrated amplifier

#### Multi-functionality and convenience

The L-595A SPECIAL EDITION combines the quality of a separate amplifier and preamp with the functionality of integrated amplifiers into a single unit. The built-in phono amplifier, with MM/MC compatibility, allows you to enjoy superb analog record playback. The unit features electronically controlled bass/treble tone controls and a volume-linked loudness function that matches human hearing characteristics. There are also perfect applications for different listening environments, such as a bi-amp configuration with an added power amplifier and the SEPARATE function that enables coexistence with the surround environment of an AV amplifier. In addition, we have included our premium RA-17A aluminum remote



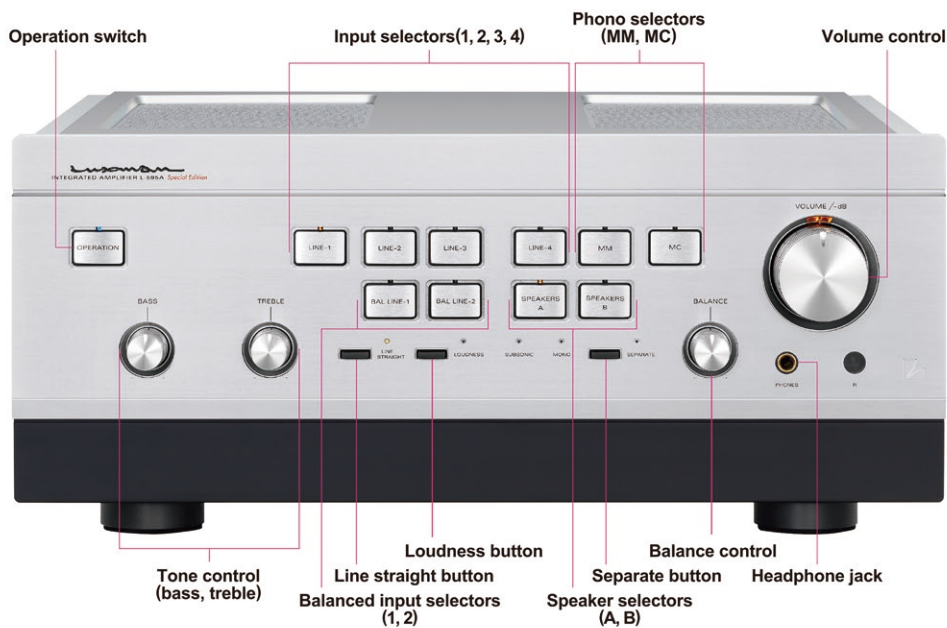
Aluminum remote control RA-17A



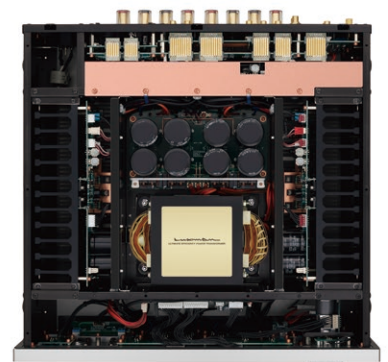
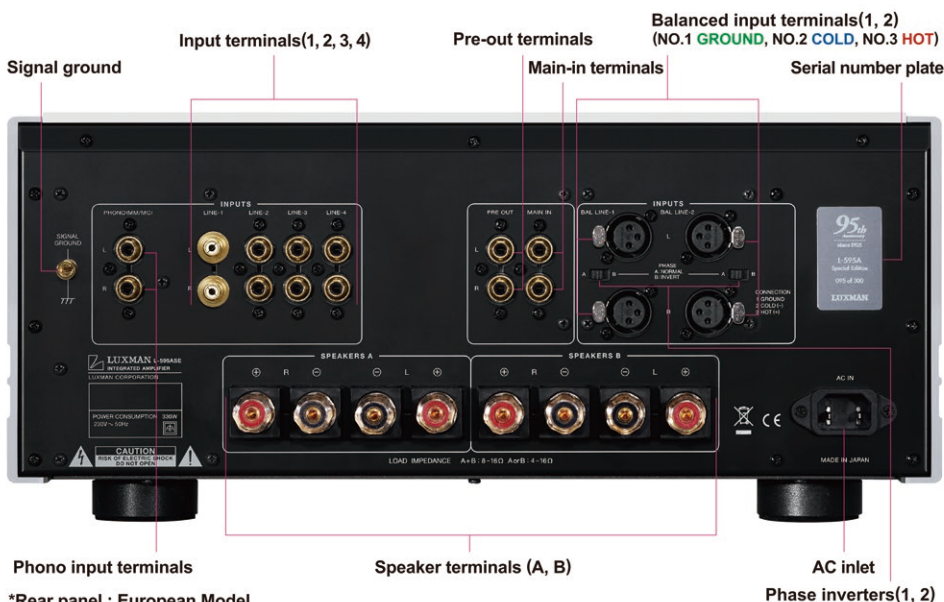
Density gradient cast-iron feet



# L-595ASE INTEGRATED AMPLIFIER



Remote control  
RA-17A



Internal configuration

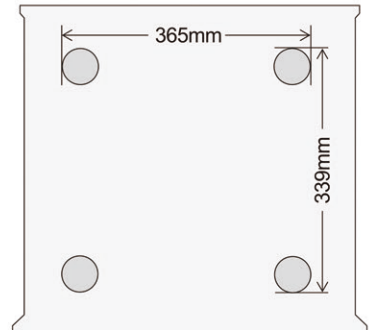
## SPECIFICATIONS

Rated output	30W + 30W (8Ω), 60W + 60W (4Ω)
Input sensitivity / input impedance	PHONO (MM) : 2.5mV / 47kΩ PHONO (MC) : 0.3mV / 100Ω LINE : 180mV / 47kΩ BAL.LINE : 180mV / 55kΩ MAIN IN : 550mV / 47kΩ
Output voltage / output impedance	PRE OUT : 1V / 600kΩ
Frequency response	PHONO : 20Hz to 20kHz (±0.5dB) LINE : 20Hz to 100kHz (within -3.0dB)
Total harmonic distortion	0.007% or less (8Ω, 1kHz) 0.06% or less (8Ω, 20Hz to 20kHz)
S / N ratio (IHF-A)	PHONO (MM) : 91dB or more PHONO (MC) : 75dB or more LINE : 105dB or more
Volume adjustment	New LECUA1000
Amplification circuit	ODNF-u
Output configuration	Bipolar 3-parallel push-pull
Damping factor	370

Max. amount of tone control	BASS: ±8dB at 100Hz TREBLE: ±8dB at 10kHz
Power supply	230V~(50Hz) / 115V~(60Hz)
Power consumption	330W 230W (under no signal), 0.4W (at standby)
External dimensions	440 (W) x 193 (H) x 462 (D) mm front side knob of 19mm and rear side terminal of 36mm included in depth
Net weight	29.0kg (main unit)
Accessories	Remote control (RA-17A)
Speaker terminal	Width of part a: 16mm or less
Supported Y-lug terminal dimension	Width of part b: 7mm or more



\* Connection may not be performed depending on the shape of the Y-lug terminal.



\* Setting the phase inverter switch to the B position allows balance input terminal No 2 to change to **HOT**, and No. 3 to **COLD**.

\* Volume mute, monaural and subsonic functions can be turned on and off with remote control

\* Specifications and appearance are subject to change without notice. \* The products listed in this catalog do not include line cables. Please purchase cables separately.

## LUXMAN

LUXMAN CORPORATION, 1-3-1 Shinyokohama, Kouhoku-ku, Yokohama-shi, Kanagawa 222-0033, Japan  
Tel: +81-45-470-6980 Fax: +81-45-470-6997 www.luxman.com



## Safety Cautions

To ensure correct use of this product, read the "Owner's Manual" prior to use. Failure to follow all safety cautions can result in injury or property damage.