



MAJIK 109

OVERVIEW

High performance three-way bookshelf loudspeaker

KEY FEATURES INCLUDE

- 2K driver array for clean and pure high-frequency reproduction and flexible positioning
- High quality 5" drive unit delivers pitch-accurate musical bass
- Front ported bass system allows extended bass and greater positioning flexibility
- High quality crossovers ensure accurate music reproduction across the full frequency range
- Simple upgrade path from single to multi-wiring / amping to fully Aktiv configuration

Majik 109 is a three-way bookshelf loudspeaker which delivers astonishing musical performance never before heard from such a compact unit.

Majik 109 features Linn's 2K driver array – an evolution of the array technology found in Linn's highest performing loudspeakers. This technology houses two high-frequency drive-units – a tweeter and super-tweeter - in a dedicated cast alloy chassis, ensuring wonderfully clean and pure high frequency reproduction. The unique design of the 2K driver array provides even dispersion for exceptional performance, regardless of where the loudspeakers are placed in a room.

A bass reflex port is hidden behind the 2K driver array and provides deep and musical bass without the need for a large cabinet. The use of a front-firing port means Majik 109 can be positioned close to a wall without compromising bass extension.

Majik 109 will perform to an astonishing level whether mounted on specially designed Majik 109 steel stands*, on the wall using a Linn Brakit*, or simply placed on a bookshelf.

Even higher levels of performance can be easily achieved with a range of upgrade options from bi-wiring through to fully Aktiv configuration.

Available in a choice of high-grade, real-wood veneer finishes, the timeless design of Majik 109 will enhance your living space.

Majik 109 complements other components in the Linn Majik range - the perfect introduction to genuine Linn specialist performance.

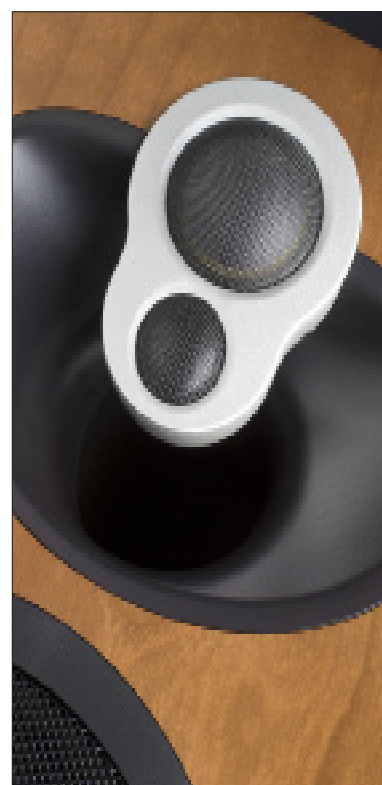
*available to purchase separately



1



2



3

MAJIK 109

TECHNICAL SPECIFICATIONS

High performance three-way bookshelf loudspeaker

- Date of introduction October 2008
- Type 3-way bookshelf loudspeaker
- Dimensions (H) 327 mm x (W) 192 mm x (D) 256 mm
(H) 12^{7/8} inches x (W) 7^{1/2} inches x (D) 10^{1/8} inches
- Weight 5.92 kg / 13 lb
- Cabinet Volume 9 litres
- Impedance (passive) 4 Ω
- Impedance (Aktiv bass/mid) 7 Ω
- Impedance (Aktiv tweeter) 7 Ω
- Impedance (Aktiv super-tweeter) 7 Ω
- Efficiency 88 dB for 1 watt at 1 metre (1 kHz)
- Frequency response (passive) 72 Hz - 20 kHz +
- Frequency response (Aktiv) 65 Hz - 20 kHz +
- Crossover options Fully passive or fully Aktiv
- Connection options Up to three-way multi-wire/amp passive; three-way Aktiv.
4mm banana plugs or spades
- Finishes Black Ash, Rosenut, Walnut, Cherry, Oak, White
- Upgrade Stand (available separately) Black / Silver
(H) 600 mm x (W) 250 mm x (D) 320 mm
(H) 23^{3/8} inches x (W) 9^{7/8} inches x (D) 12^{5/8} inches
5.92 kg / 13 lb

The above information is subject to change without prior notice.

Linn Products Limited

Glasgow Road, Waterfoot, Eaglesham, Glasgow G76 0EQ, Scotland, UK.

Telephone: +44 (0) 141 307 7777, Facsimile: +44 (0) 141 644 4262, Helpline: 0500 888909, E-mail: helpline@linn.co.uk, Website: www.linn.co.uk

Linn Records Limited

Glasgow Road, Waterfoot, Eaglesham, Glasgow G76 0EQ, Scotland, UK.

Telephone: +44 (0) 141 303 5027, Facsimile: +44 (0) 141 303 5007, Helpline/Mail order: +44 (0) 141 303 5029, E-mail: records@linn.co.uk,

Website: www.linnrecords.com

Copyright © 2008, Linn Products Limited. All rights reserved.

Linn, the Linn logo and all other Linn product names and slogans are trade marks or registered trade marks of Linn Products Limited, registered in at least the UK and/or the EU. Linn Products Limited disclaims any proprietary interest in trade marks and trade names other than its own.

10/08