



HIFIMAN HE400i

Owner's Guide

Downloaded from www.linephaze.com

- Find specs, manuals and used listings across thousands of



Customer Service Tel: 1- 201-443-4626

E-mail: customerservice@HIFIMAN.com



Scan QR Code to join

Downloaded from www.linephaze.com

- Find specs, manuals and used listings across thousand



www.hifiman.com

Thank you for purchasing the HIFIMAN HE400i, a high quality, full-size planar magnetic headphone designed for critical listening in the home or studio. HIFIMAN is a leading designer and manufacturer of high performance headphones, headphone amplifiers and portable players.

This Owner's Guide is intended to provide a useful overview of your new HE400i and how to best operate it for many years of enjoyment, safety and reliability. Please take the time to familiarize yourself with its many features. If you have any questions or need additional information, please contact your authorized HIFIMAN dealer or us directly.

Downloaded from www.linephaze.com

- Find specs, manuals and used listings across thousands



Product Overview

The HIFIMAN HE400i is an open-backed headphone with specially designed planar magnetic drivers. Connection is made via the supplied cable with screw-on connectors using separate ground leads for each channel to minimize crosstalk between the channels.

Using single-ended drivers, HE400i delivers a lifelike soundstage and spatial imaging. Its increased efficiency of 93dB allows it to be driven with a modest size amplifier or even be used with a portable audio player or smart phone.

HE400i is 30% lighter than comparable planar magnetic headphones allowing the listeners to comfortably enjoy music for hours on end. In addition, a newly-designed headband and beveled hybrid earpads provide added comfort as well as improved sound quality.





Specifications

- Frequency Response: 20Hz - 35kHz
- Impedance: 35 Ω
- Efficiency: 93dB
- Weight : 370g (13.05oz)

Accessories

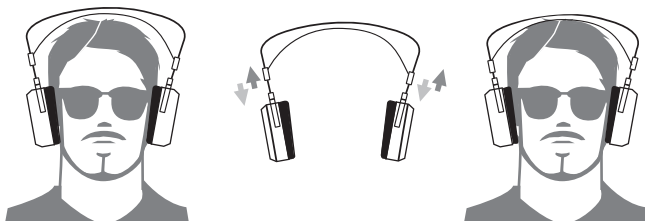
- Headphone Cable (1.5 meter or 4.9 Feet; 3.5mm plug)
- Earpads : 1 pair (on the headphone)
- ¼" (6.35mm) headphone adapter

Note: The HE400i is designed to be used with its earpads on at all times. If for some reason, you need to remove the earpads, please replace them as soon as possible.



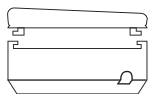
Headband Adjustment

If the top of the headband does not touch your head, move the sliding black block on each side of the headband so that the headband rests on top of your head.

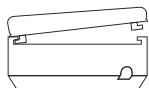


Earpad Design and Replacement

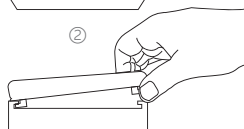
The HE400i earpad is a beveled design with varying thicknesses to conform to the human head. Should you need to remove and reinstall the earpad (i.e. for replacement) keep the thinner part on the front side of the ear cup and thicker part on the back. Fit the mounting flange onto the rim of the ear cup. Then press around the mounting flange to make sure the earpad snaps into place.



①

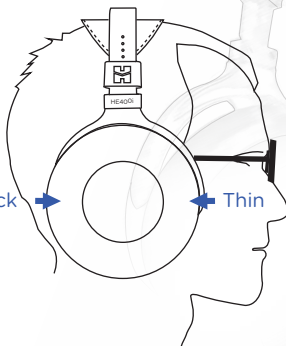


②



Thick

Thin





Set-up and Operation

1. To obtain optimum performance, please allow at least 150 hours of constant use for break-in of your new headphone. This break-in period does not have to be at high volume.
2. The connectors utilize 2.5mm mini plugs on the headphone side. Push the connector straight onto the socket. Repeat the process with the other mini plug connector.
3. The supplied cable adapter with the large $\frac{1}{4}$ " (6.35mm) jack is connected with the typical headphone output of an amplifier or even better with a headphone amplifier. Please be aware that many home amplifiers will switch off the loudspeaker output when a headphone is connected.
4. To clean your headphone, please use a soft, slightly damp cloth only. Do not use any detergents and make sure not to let any fluid enter the open sides of the headphone. The leather headband can be maintained using standard leather care products. When your earpads become worn and no longer offer a good connection to your head, you should replace them with new ones which can be supplied from your dealer, or head-direct.com. Note: The internal drivers do not require maintenance. Any attempt to remove or modify them will void your warranty.



www.hifiman.com

Warranty

- One-year free repair or replacement when used according to our recommended instructions. Contact us first to troubleshoot before returning and then if needed, an RA will be issued. Return shipping to HIFIMAN or authorized service facility is the owner's responsibility.
- Product is intended for residential use only.

For any further information or questions, please contact your authorized HIFIMAN dealer. Or email us directly at customerservice@hifiman.com.



facebook.com/hifimanelectronics



twitter.com/hifimanofficial



www.hifiman.com



HIFIMAN

Innovating the Art of Listening



Downloaded from www.linephaze.com

- Find specs, manuals and used listings across thousands