



## Elegant BS 312.2

## ELAC Elegant BS 312.2 - The Classic of Tomorrow



### JET6 Tweeter

Its innovative technology with new membrane film layout makes the JET 6 the most advanced JET tweeter ever. Thanks to its unique features, the JET 6 achieves unprecedented precision and resolution.



### AS-XR-Technology

The new bass-midrange driver features an optimised magnet system with a larger voice coil. It provides an ultra-precise, solid bass foundation and opens up a completely unobstructed view of an immensely detailed, magnificent sound spectrum.



### Ready to Connect

Thanks to its connections the Elegant BS 312.2 offers the possibility of using bi-wiring and bi-amping.

ELAC is writing the next chapter in a 30-year success story with the new Elegant BS 312.2. The BS 312.2 is the result of a tradition of innovation and attention to detail. Designed to fully unleash the emotion of music.

The BS 312.2 has a 2-way bass reflex design. The all-aluminium cabinet requires no conventional baffle. This detaches the imaging entirely from the speaker and creates an immersive sound experience.

Equipped with the best technologies of the latest generation, the BS 312.2 takes a quantum leap. The new JET 6 with groundbreaking technology and an improved bass-midrange driver with AS-XR cone take the thought-out concept of the ultra-compact speaker to a new level.

The stylish design blends harmoniously into modern living environments. Thanks to the perfect interaction of all components, the BS 312.2 sounds strikingly detailed, vivid and smooth. The BS 312.2 is simply pure ELAC.

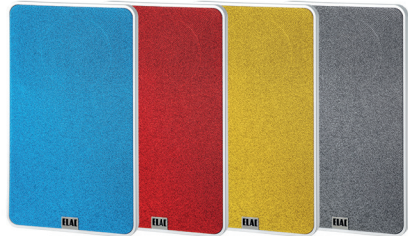
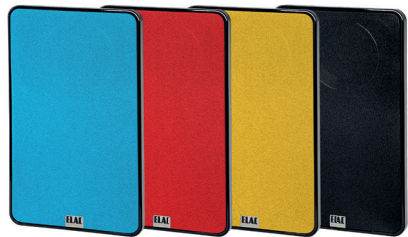


# ELAC

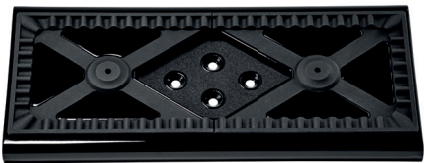
## Elegant BS 312.2

### ELEGANT BS 312.2 SPECIFICATIONS

Height x Width x Depth (with grille)	208 x 122 x 270 (282) mm
Weight	7,2 kg
Typ	2-Wege, bass reflex
Woofer	115 mm Ø, AS-XR-cone
Twetter	JET 6
Crossover frequency	3200 Hz
Frequency range (IEC 268-5)	42 – 50.000 Hz
Sensitivity	87 dB at 2.83 V/m
Suitable for amplifiers from ... to ..	4 – 8 Ω
Recommended amplifier power	50 – 150 W/channel
Nominal   Peak power handling	75   100 W
Nominal impedance	4 Ω
Minimum impedance	3.4 Ω at 280 Hz
Finishes	White High Gloss Black High Gloss
Optional accessories	Stand LS 60 Base (acoustic decoupling) in White High Gloss or Black High Gloss Metal grille in black or white Cover grille fabric in different colors



Cover grille fabric in different colors



Base for Elegant BS 312.2



ELEGANT



# ELAC

## Elegant BS 312.2



### The Classic of Tomorrow

The new Elegant BS 312.2 marks the pinnacle of a 30-year model history, the result of living tradition, the never-ending pursuit of innovation and attention to detail. The best components and the latest technology elevate the concept of this ultra-compact speaker to an unprecedented level.

The fact that this previously unknown level of acoustic maturity and fascination can be achieved is not least due to the newly developed tweeter: with the JET 6, ELAC introduces the sixth generation of its tweeter developed and manufactured in Kiel. For this purpose, the company drew on its enormous empirical knowledge and the entire expertise of several decades of development. And so a new foil layout and a modified front panel make the JET 6 a modern masterpiece.

The Elegant BS 312.2 is pure ELAC, the quintessence of the legendary sound from Kiel - there is probably no other ELAC loudspeaker that is so strongly focused on the essential DNA of the traditional North German manufacturer.

Two newly developed accessories optionally enrich the look of the Elegant BS 312.2 even further. A new stand, the alrulastic base refines the already legendary design of the Elegant BS 312.2 if required. But the new, high-gloss lacquered aluminium stand not only lifts the loudspeaker visually to new heights, it also includes an elastic structure that acoustically decouples the loudspeaker and its footprint.