

DENON®

PMA-1600NE

INTEGRATED AMPLIFIER

ENGLISH

FRANÇAIS

ESPAÑOL

Quick Start Guide

Guide de démarrage rapide / Guía de inicio rápido

Read Me First....

Lisez-moi en premier.... / Lea esto primero....

Downloaded from www.linephaze.com

- Find specs, manuals and used listings across thousands of audio products.

Welcome

Thank you for choosing a Denon amplifier. This guide provides step-by-step instructions for setting up your amplifier.

Please do not return this unit to the store – call for assistance.









If you need help... :

If you need additional help in solving problems, contact Denon customer service in your area.

For details, see the Denon homepage. www.denon.com

Before You Begin

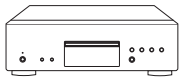
What's In the Box

| | | | |
|---|---|----------------------------------|---|
| Quick Start Guide |  | Integrated Amplifier |  |
| CD-ROM (Owner's Manual) |  | Power cord |  |
| Safety Instructions |  | Remote control unit (RC-1213) |  |
| Warranty (for North America model only) |  | R03/AAA batteries |  |

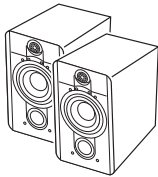
Downloaded from www.linephaze.com

- Find specs, manuals and used listings across thousands of audio products.

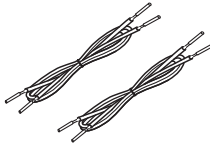
Required for Basic connections



CD player

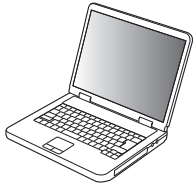


Speaker systems



Speaker cables

Optional



Computer



USB cable



- These drawings are for illustrative purposes only and may not represent the actual product(s).

Downloaded from www.linephaze.com

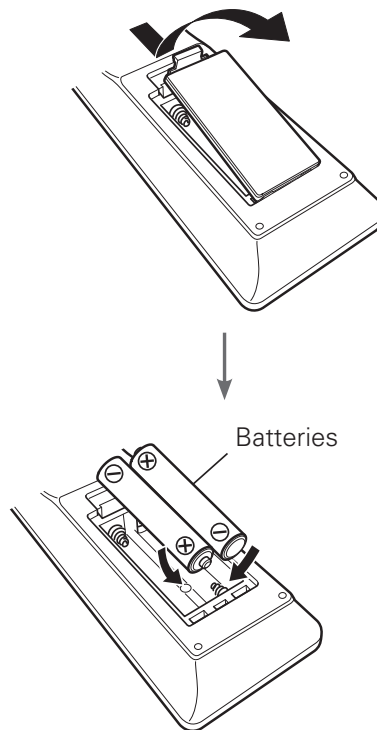
- Find specs, manuals and used listings across thousands of audio products.

Setup

There are seven steps to the setup process.

- 1** Install batteries in the remote control unit
- 2** Connect the speakers to the amplifier
- 3** Connect the CD player to the amplifier
- 4** Plug the power cord into a power outlet
- 5** Begin CD playback
- 6** Installing the Windows driver software
- 7** Enjoying music using PC or Mac

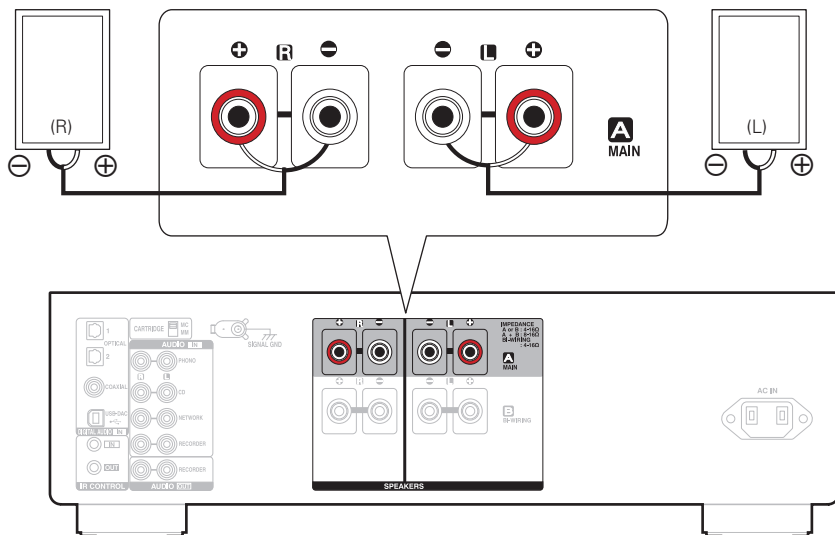
1 Install batteries in the remote control unit



Downloaded from www.linephaze.com

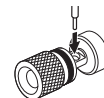
- Find specs, manuals and used listings across thousands of audio products.

2 Connect the speakers to the amplifier

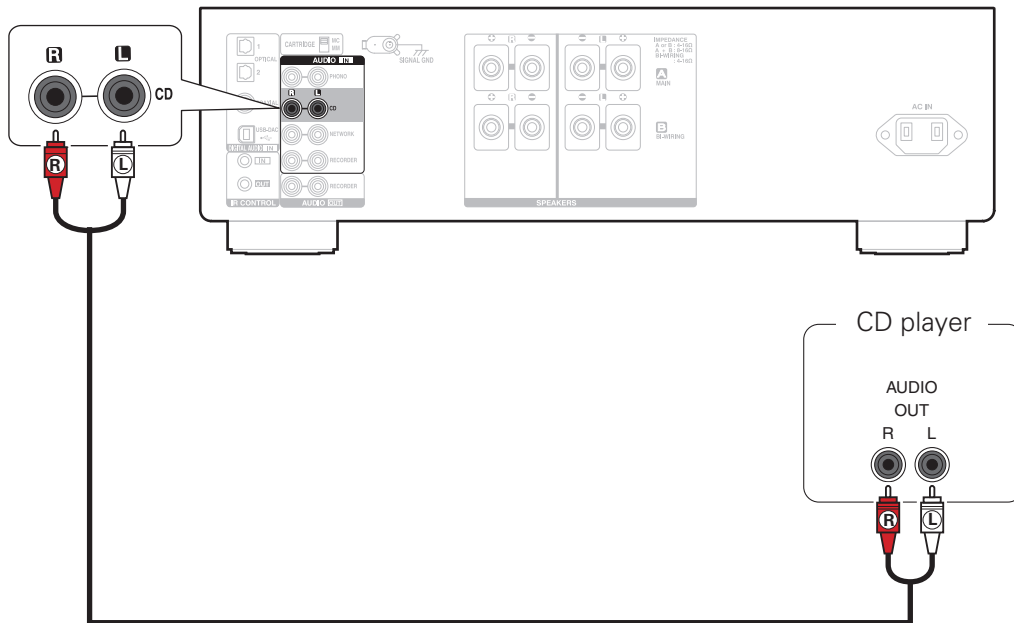


Connecting the speaker cables

- ① Peel off about 3/8 inch (10 mm) of sheathing from the tip of the speaker cable, then either twist the core wire tightly or apply solder to it.
- ② Turn the speaker terminal counterclockwise to loosen it.
- ③ Insert the speaker cable's core wire to all the way into the speaker terminal.
- ④ Turn the speaker terminal



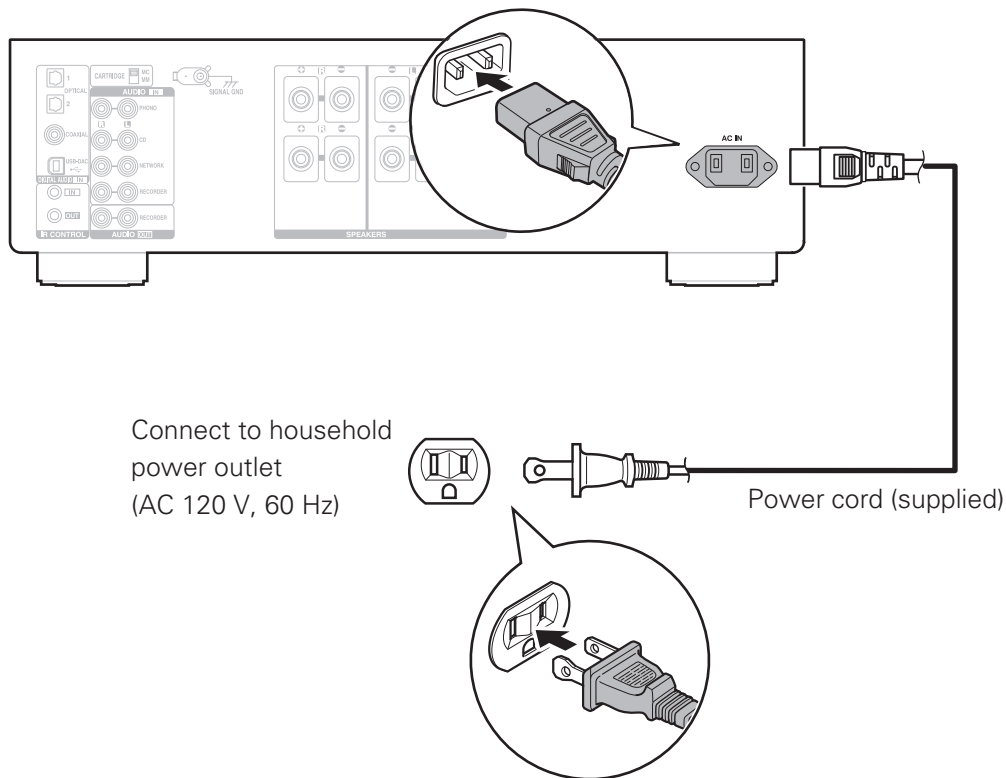
3 Connect the CD player to the amplifier



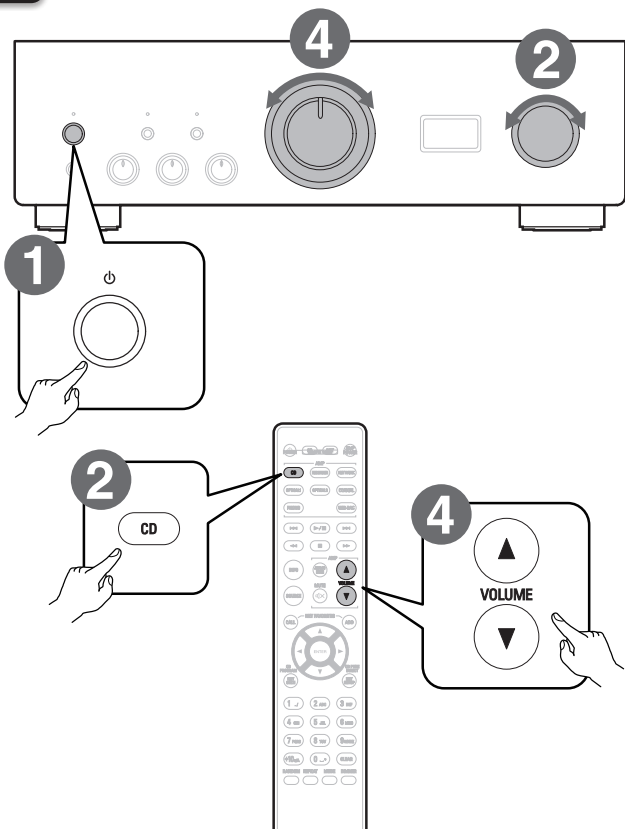
Downloaded from www.linephaze.com

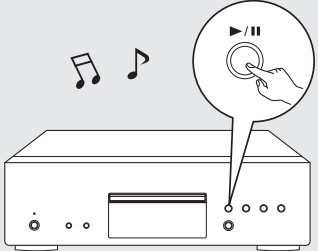
- Find specs, manuals and used listings across thousands of audio products.

4 Plug the power cord into a power outlet



5 Begin CD playback



- 1 Press the power operation button.**
Turn VOLUME on the main unit to adjust the volume to the lowest level before turning on the power.
 - 2 Set the input source to "CD".**
"CD" is displayed on the display of this unit.
 - 3 Play the CD player.**
 - 4 Adjust the volume.**
- 
- The diagram shows a side view of the main unit with a callout showing a hand pressing the play/pause button on the front panel. Musical notes are shown above the unit, indicating playback.

6 Installing the Windows driver software

NOTE

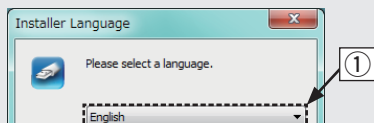
- The installation of the driver software is not necessary in the following cases.
 - When you do not play back the music from a PC using USB-DAC of this unit.
 - When using a Mac OS.

1 Download the dedicated driver from the “Download” section of the PMA-1600NE page of the Denon website (<http://www.denon.com/pages/home.aspx>) onto your PC.

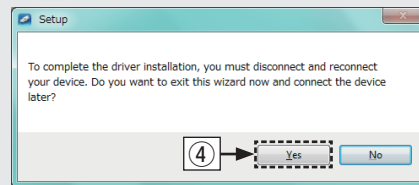
2 Unzip the downloaded file, and double-click the exe file.

3 Install the driver.

- ① Select the language to use for the installation.
- ② Click “OK”.



- ③ The wizard menu is displayed. Follow the instructions on the screen.
- ④ When the wizard is completed, click “Yes”.



NOTE

- The driver software cannot be installed correctly if your PC is connected to the unit by a USB cable.
- If the unit and your PC are connected by a USB cable and the PC is switched on before installation, disconnect the USB and restart the PC.
- Please see the FAQ at www.denon.com if you experience any issues getting audio to play from your PC through the PMA-1600NE. You may also want to check the support pages for your audio player application.

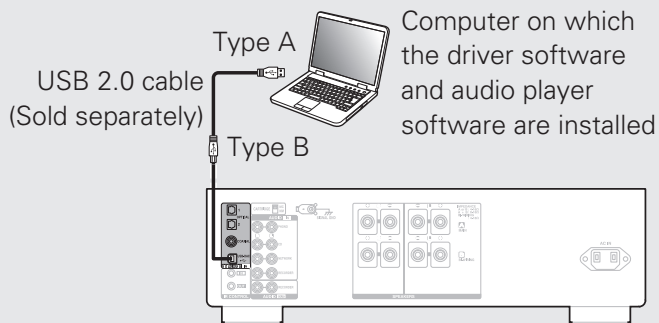
Downloaded from www.linephaze.com

- Find specs, manuals and used listings across thousands of audio products.

7 Enjoying music using PC or Mac

❑ Connect to PC or Mac

1 Connect to PC or Mac.

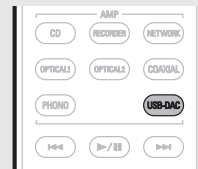


2 Press on this unit.

- When the unit power is turned on, the computer automatically finds and connects to the unit.

❑ Listen to PC or Mac Audio

1 Press USB-DAC to change the input source to “USB-DAC”.



2 Set the audio signal destination to this unit on the computer.

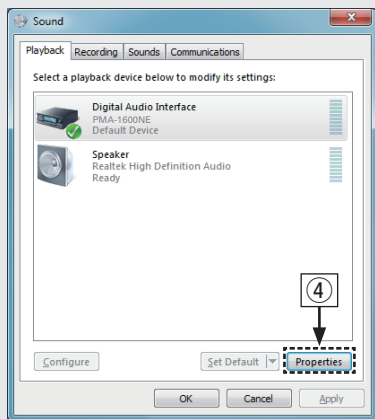
System Requirements

- Windows 7, Windows 8, Windows 8.1 or Windows 10
- Mac OS X 10.10, 10.11 or macOS 10.12

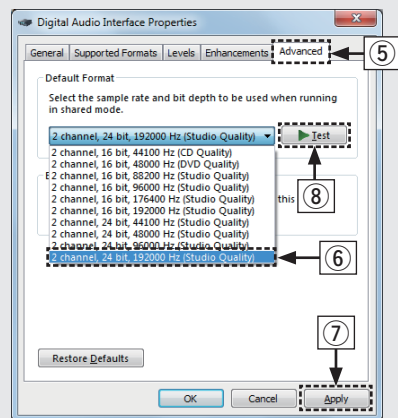
[Windows OS]

- ① Click the “Start” button and click “Control Panel” on the PC.
 - The control panel setting list is displayed.
- ② Click the “Sound” icon.

- ③ Check that there is a checkmark next to "Default Device" under in "PMA-1600NE" of the "Playback" tab.
- When there is a checkmark for a different device, click "PMA-1600NE" and "Set Default".
- ④ Select "PMA-1600NE" and click "Properties".
- The PMA-1600NE Properties window is displayed.

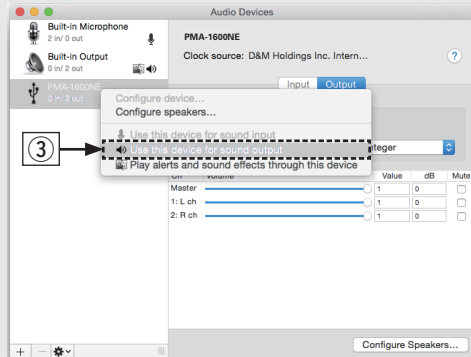


- ⑤ Click the "Advanced" tab.
- ⑥ Select the sampling rate and bit rate to be applied to the D/A converter.
- It is recommended that "2 channel, 24 bit, 192000 Hz (Studio Quality)" is selected (Windows 7).
- It is recommended that "2 channel, 32 bit, 192000 Hz (Studio Quality)" is selected (Windows 8/Windows 8.1/Windows 10).
- ⑦ Click "Apply".
- ⑧ Click "Test".
- Check that audio from this unit is output from the PC.

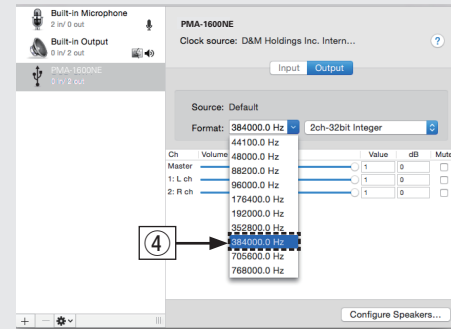


[Mac OS]

- ① Move the cursor to "Go" on the computer screen, and then click "Utilities".
 - The utility list is displayed.
- ② Double-click "Audio MIDI Setup".
 - The "Audio Devices" window is displayed.
- ③ Check that "Use this device for sound output" is checked in "PMA-1600NE".
 - If a different device is checked, select and "Secondary click" on "PMA-1600NE", and then select "Use this device for sound output".



- ④ Select the "PMA-1600NE" format.
 - It is normally recommended to set the format to "384000.0 Hz" and "2ch-32 bit Integer".



- ⑤ Quit Audio MIDI Setup.

3

Use your favorite music applications on your PC/Mac to play audio through the PMA-1600NE.

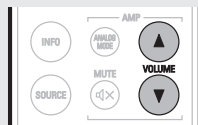
- For high resolution audio playback you will need to obtain an advanced audio player software such as JRiver Media Center or Audirvana.

USB: DSD
11.2MHz

The type of music file and sampling frequency are displayed.

4

Adjust the volume.



NOTE

- Additional settings to output audio to the PMA-1600NE may have to be selected in your advanced audio player application. Please refer to the user's manual for your application.

Owner's Manual

Please reference to the Owner's Manual for more details about the setup and operation of the amplifier and its features.

❑ Online Version

Enter the following URL into your web browser:
manuals.denon.com/PMA1600NE/NA/EN/



Online Manual

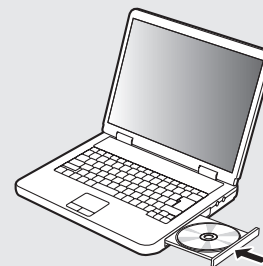


❑ Printable Version

Access the print version of the owner's manual from the included CD-ROM or select the "PDF Download" link from the Online Version.

1

Insert the disc into your computer.



2

Follow the screen or double click on the PDF file.



Product Name : Integrated Amplifier

Downloaded from www.linephaze.com

- Find specs, manuals and used listings across thousands of audio products.

DENON®
www.denon.com

Printed in Japan 5411 11604 00AD
Copyright © 2016 D&M Holdings, Inc. All Rights Reserved

Downloaded from www.linephaze.com

- Find specs, manuals and used listings across thousands of audio products.