

**T**hank you for purchasing the Cayin CS-55CD compact disc player.

Used properly and carefully, it should give you many years of outstanding musical reproduction. Please read this user manual carefully before using it.

---

## I SPECIFICATIONS

---

### CD PLAYER:

Output level:	2.0V $\pm$ 1.5dB
Frequency response:	20Hz~20kHz $\pm$ 0.5dB
Distortion and noise:	$\leq$ -60dB
S/N ratio:	$\geq$ 90dB
Dynamic range:	$\geq$ 90dB
Digital output characteristics:	According to the IEC958 standard

### USB Audio:

Compatible with Audio Class	1.0 and Audio Class 2.0
Word Length:	16 - 24 bit
Sampling Frequency Rates:	44.1, 48, 88.2, 96, 176.4 and 192kHz
Operating system:	Windows XP®, Windows Vista®, Windows 7® Windows 8® and Mac OS(10.6.3 and above)

**Power requirements:** 230VAC, 50/60Hz

**Weight:** 6kg

**Dimension:** 360×325×90mm (W×D×H)

**Power consumption:** 20W

---

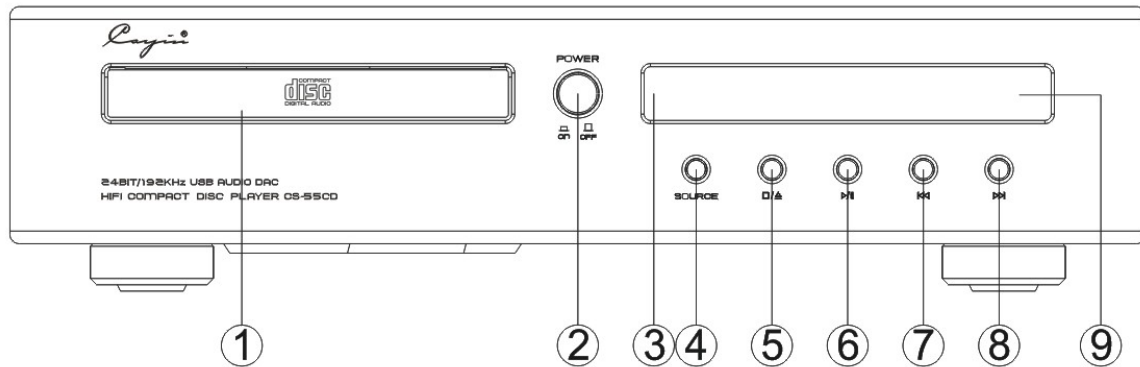
## II OPENING THE PACKAGE

---

Please check the carton carefully whether there are any damages before you open it. Put it on a flat surface with the arrow upward. Rip away the sealed tape and open the carton, then you'll find:

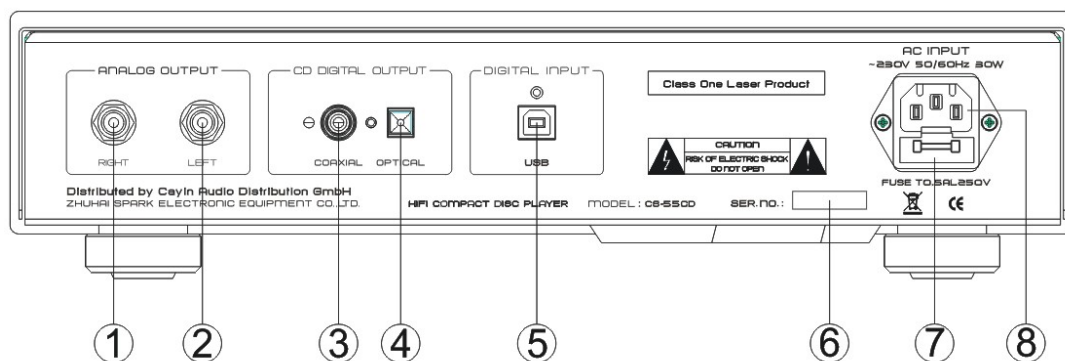
1. One set of CS-55CD cd player
2. SP-13G remote control unit
3. Two fuses
4. One power cord
5. One user manual
6. One USB cable
7. One driver software CD

### III FRONT PANEL



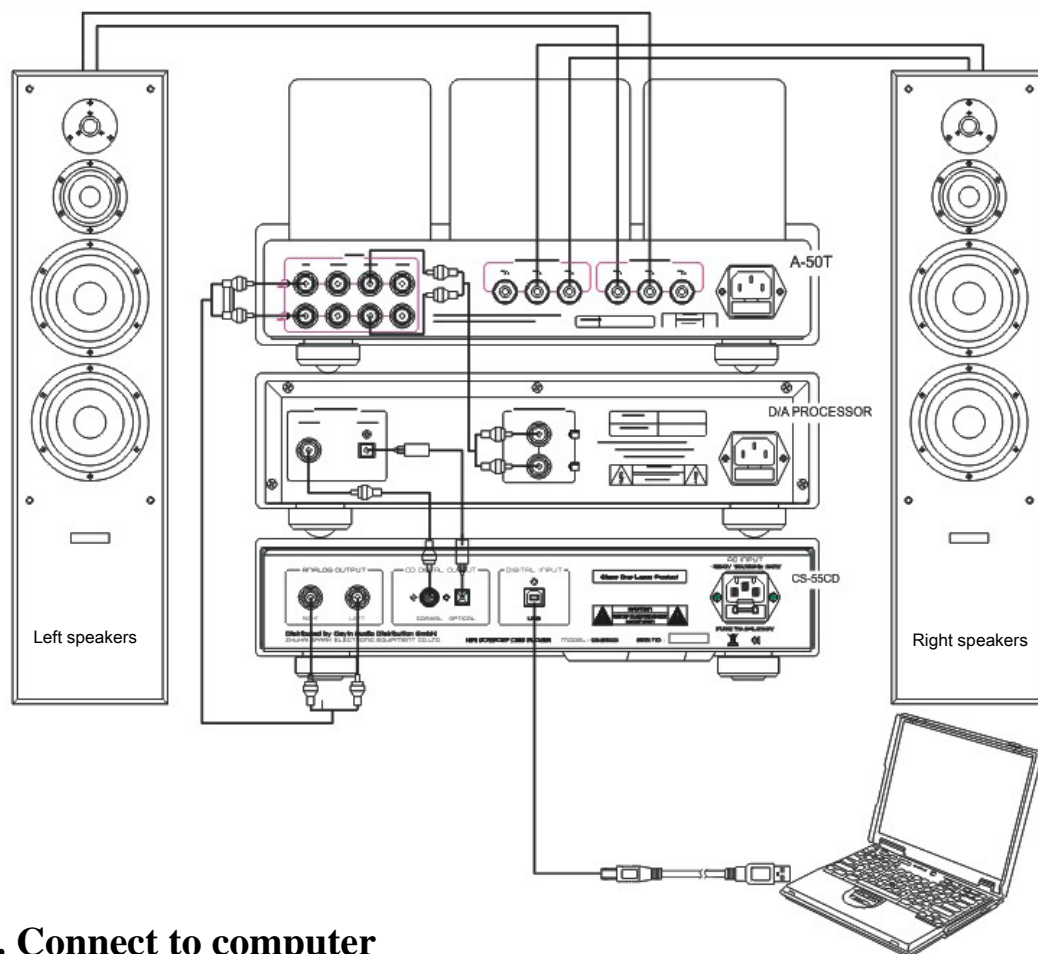
- ① Disc tray
- ② Power switch
- ③ VFD display
- ④ Source button
- ⑤ Open/Stop button
- ⑥ Play/Pause button
- ⑦ Skip (reverse) button
- ⑧ Skip (forward) button
- ⑨ Remote sensor window

### IV REAR PANEL



- ① Analog output (Right channel)
- ② Analog output (Left channel)
- ③ CD digital output (Coaxial)
- ④ CD digital output (Optical)
- ⑤ USB input port
- ⑥ Serial NO.
- ⑦ Fuse socket
- ⑧ Power socket

## V CONNECTION DIAGRAM



### 1. Connect to computer

Connect the USB port to the computer's USB port with the USB cable which must be according to the USB2.0 specification. Only the USB port in the rear panel can be used for desktop computer.

### 2. Connect to DAC

Connect the COAXIAL output to the COAXIAL input of the DAC with the coaxial cable. Or you can connect the OPTICAL output to the OPTICAL input of the DAC with optical cable.

### 3. Connect to power amplifier

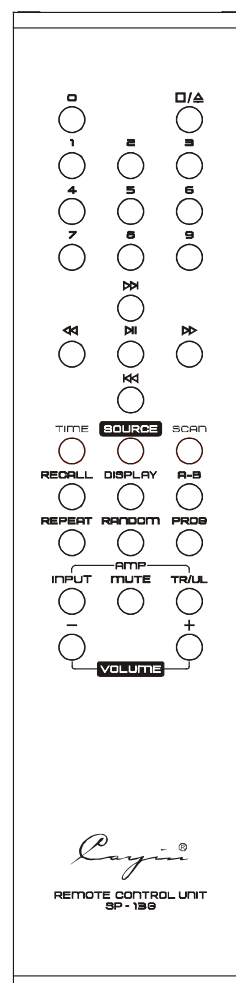
Connect the analog output terminal to the analog input terminal of the power amplifier with audio cable.

**Note:** Be sure to use at rated voltage. Please check whether the rated voltage marking on the rear panel corresponds to your line voltage. If not, please contact your dealer.

**CAUTION:** Please shut down the power before connections in case of noise and damage to the unit. You need to wait for about 35 seconds after you turn on the unit every once, because the vacuum tube needs to be preheated.

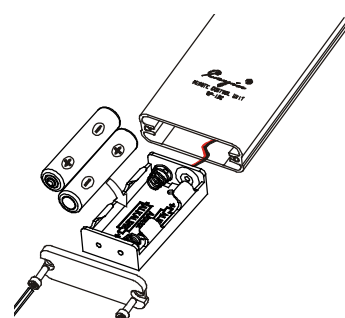
## VI REMOTE CONTROL UNIT

- ① “■/▲”: Stop/Open/Close button
- ② “0” “1” “2” ... “9”: Numeric button
- ③ “▶▶”: Play/Pause button
- ④ “◀◀”: Search (reverse) button
- ⑤ “▶▶”: Search (forward) button
- ⑥ “◀◀”: Skip (reverse) button
- ⑦ “▶▶”: Skip (forward) button
- ⑧ “TIME”: Time model button
- ⑨ “SOURCE”: Source button
- ⑩ “SCAN”: Scan button
- ⑪ “RECALL”: Recall button
- ⑫ “DISPLAY”: Adjusting brightness
- ⑬ “A-B”: Section repeat button
- ⑭ “REPEAT”: Repeat button
- ⑮ “RANDOM”: Random button
- ⑯ “PROG”: Program button
- ⑰ Other button: Only for Cayin power amplifier



### ※REPLACE THE BATTERIES

1. Place the remote control upside up. Screw the rear cover open with the screwdriver.
2. Pull out the old battery case carefully (do not break the wires connected).
3. Put in the new batteries with correct polarity.
4. Push in the battery case and screw the rear cover close.




### ※NOTE

- ◆ Don't drop the remote control. Keep the remote control dry.
- ◆ Replace the batteries timely.
- ◆ Don't mix new and old batteries together and use the batteries with the same specification
- ◆ Take out the batteries if you don't use the remote control for an extended period of time.
- ◆ Batteries with high quality are recommended.

## VII INSTALLING USB AUDIO DRIVER SOFTWARE

If your computer operation system is Windows, you should install driver to get the function of USB audio before using it.

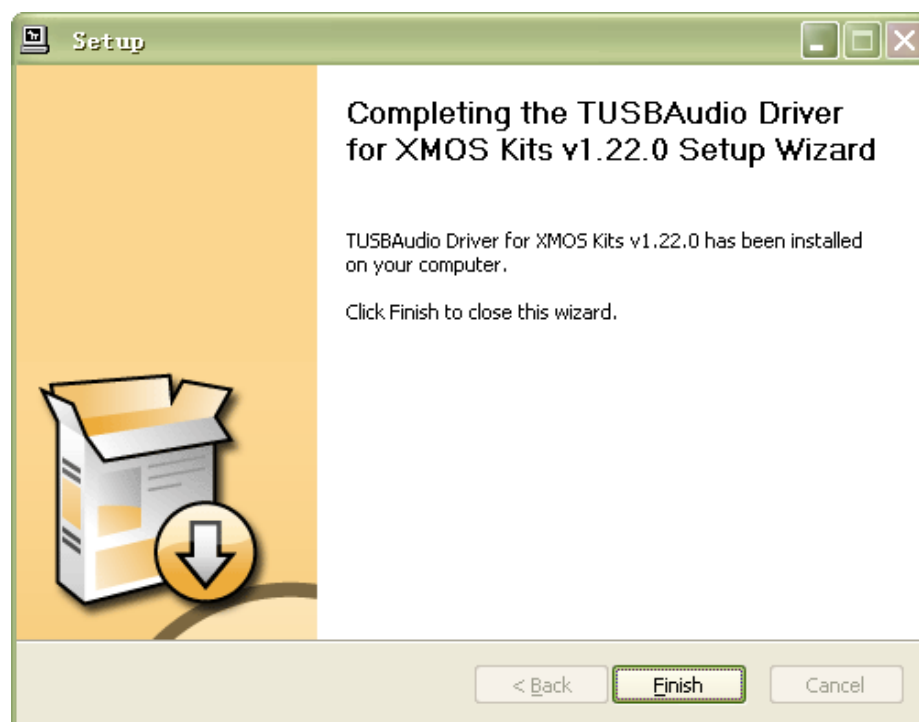
1. Connect the computer to the unit with USB cable.
2. Double-click “” to run the **driver** installer, As below:



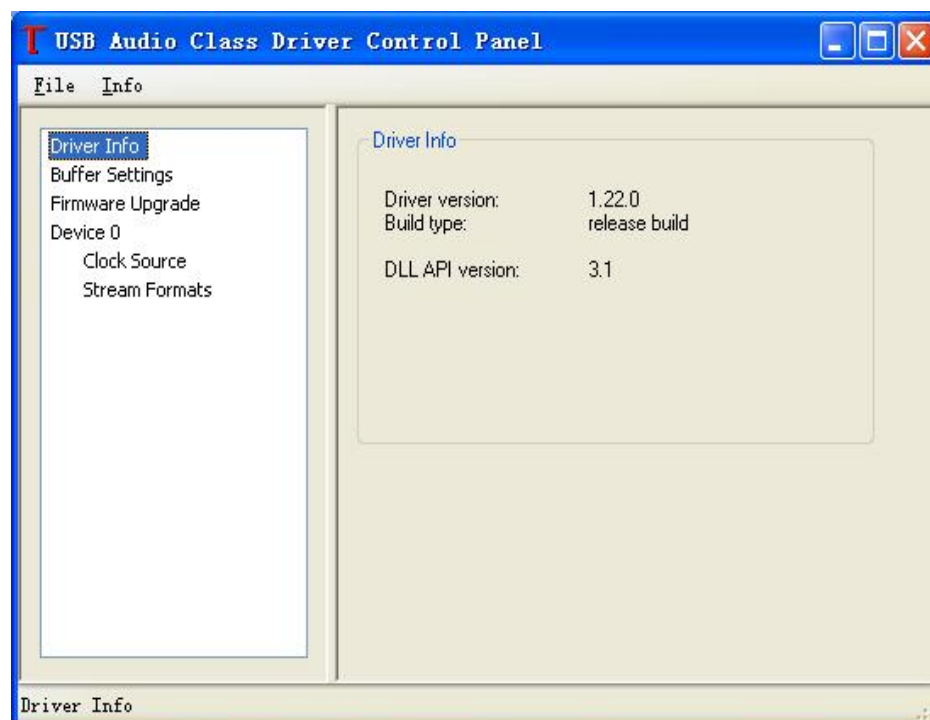
3. Choose the install location, as below:



4. Follow the steps of the installation interface to continue, As below:



5. After finish installing driver, click the “Start” → “Program” → “Thesycon” → “TUSBAudio Driver for XMOS Kits” , then click “TUSBAudio Control Panel” to open the USB Audio card driver control panel, connect the unit to computer with USB cable, then the USB Audio driver control panel will show some information, As below:



There is no need to install driver software if your computer operation system is Mac.

---

## VIII OPERATION

---

### Turning ON/OFF

Press the power switch (POWER) on the front panel, if the unit is CD state, the unit will firstly execute closing storehouse, the display will show CLOSE, and the unit will do self-check. Press the power switch (POWER) again the unit will turn off.

### Select CD mode

#### ① Select CD mode

Press the “SOURCE” button on the front panel or press the “SOURCE” button on the remote control unit to select CD mode.

#### ② Playback

- 1) Press the “▲” button, the disc tray slides out.
- 2) Place the compact disc in the disc tray label-side up.
- 3) Press the “▲” button, the disc tray is closed.
- 4) After the display indicates the number of tracks on the disc and the total time of the disc, press the “▶|” button on the front panel or the “▶|” button on the remote control unit to start playing the disc.

📖 If the disc tray is open when you press the “▶|” button on the front panel or press the “▶|” button on the remote control unit, it will close automatically and start playing.

📖 Normally, the disc will start playing with the first track. However, you can select a different track using the skip buttons of the numeric buttons to start playing a different selection.

#### ③ Pause

- 1) During playback, press the “▶|” button on the front panel or press the “▶|” button on the remote control unit to interrupt the playback temporarily.
- 2) Press the “▶|” button on the front panel or press the “▶|” button on the remote control unit again to resume playback from the position where pause mode was entered.

📖 Even when the player is in pause mode, the disc motor is still revolving. Since leaving the player in this condition can shorten the lifetime of the motor, do not leave the player in pause mode for a long period of time.

#### ④ Stop

- 1) During playback or in pause mode, press the “■▲” button to stop a disc that is playing and resets the player.
- 2) In program mode, press the “▲” button cancels any programmed selections.
- 3) In scan mode, press the “▲” button cancels any scan play



## ⑤ Track search

During playback or in stop mode, you can select a track to play using the skip (◀◀ or ▶▶) buttons or the numeric keys (remote only).

### ◆ Using the skip buttons

- 1) Press the “▶▶” button advances to the beginning of the next track. If the current track is the last track, press this button advances to the beginning of the first track.
- 2) Press the “◀◀” button returns to the beginning of the previous track. If the current track is the first track, press this button returns to the beginning of the last track.
- 3) In program mode, the skip buttons advance or reverse to the next track in the memorized selection list.
- 4) In pause mode, the skip buttons advance or reverse to the next track is still in pause mode.

### ◆ Using the numeric buttons (Remote only)

- 1) Press the numeric buttons on the remote control unit to directly access a track to play.
- 2) The first nine tracks on a disc can be selected by pressing the corresponding button.
- 3) When accessing track numbers equal or greater than 10, press the two buttons of the track numbers in 2 seconds.

For example, to select track 2, press the 2 button. To select track 12, press the 1 button and the 2 button in 2 seconds. After you pressing the 1 button, the unit will wait the second number for 2 seconds. If the second number is not entered in 2 seconds, the first track will be played.

## ⑥ Fast forward or fast back (Remote only)

Hold the scan buttons be pressed, playback advances or reverses at high speed.


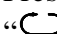


- 1) Hold “▶▶” button be pressed for fast- forward operation.
- 2) Hold “◀◀” button be pressed for fast-reverse operation.
- 3) Release the scan buttons to start playback at normal speed.
- 4) During normal playback, when scan to the end-point of the disc the scan operation will stop.
- 5) In repeat 1 mode, when scan to the end-point of the current track the unit will play the current track from the starting-point.
- 6) In repeat al mode, when scan to the end-point of the disc the unit will play the current disc from the starting-point.
- 7) In program mode, when scan to the end –point of the current track, the unit will play the next track in the memorized program. When scan to the end-point of the memorized program, the scan operation will stop.

## ⑦ Repeat (Remote only)

This function allows you to repeat the current track, the memorized program or the



entire disc continuously.

- 1) During playback, press the “REPEAT” button once to repeat the current track, the display will show “”.
  - 2) Press the “REPEAT” button again to repeat the entire disc, the display will show “”ALL.
  - 3) Press the “REPEAT” button a third time to cancel the repeat function.
-  The repeat function is automatically cancelled when the disc tray is opened.
  -  In program mode, the repeat button continuously plays the memorized program.

### ⑧ Section repeat (Remote only)

This function allows you to repeat a specified section. You can select the start point and the end point of a section in the current track and repeat it continuously.

- 1) During playback, press the “A-B” button at the start point of the section to be repeated.
- 2) Press the “A-B” button at the end point of the section to be repeated. Playback returns to the beginning of the section and the section is repeated continuously.
- 3) Press the “A-B” button a third time to resume the normal playback.

### ⑨ Recall (Remote only)


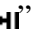



Press “RECALL” button after stopping, the unit will play from the track stopped last time.

### ⑩ Random (Remote only)

- 1) Press “RANDOM” button once, the unit will play from random track, the display will show “RAND”.
- 2) Press “RANDOM” button again, the unit will return to normal.

### ⑪ Program (Remote only)

This function allows you to memorize some tracks on the current disc for playback in a specific order.

- 1) Insert a disc, the unit will read the contents of the disc, or stop playback of the current disc.
  - 2) Press the “PROG” button followed by the track numbers in a specific order, the display will show “PROG” and “00 P 00”. Two numbers before “P” express current track selected. Two numbers after “P” express track total number.
  - 3) After entering all of the track numbers, press the “PROG” button, your selections will be memorized automatically.
  - 4) Press the “/SOURCE” button on the front panel or press the “” button on the remote control unit, the memorized program will play.
-  To stop program play, Press the “/▲” button twice during program playback, or open the disc tray in stop mode. When program play is stopped, the memorized program will be cancelled.
  -  In program mode, the skip buttons advance to the next track in the memorized program.

### **⑫ Scan (Remote only)**

Press “SCAN” button, the display will show “INTRO”, the unit will play ten seconds of every track from No.1 track.

### **⑬ Brightness adjusting (Remote only)**

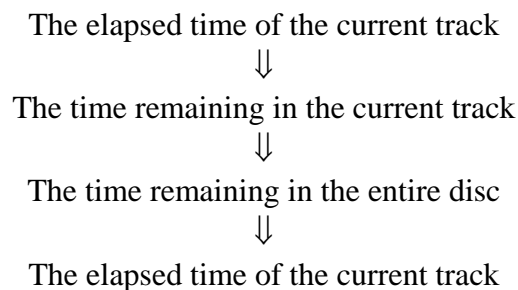
This function allows you to adjust brightness of display window.

Press “DISPLAY” button every once, the brightness of display window will circularly change from “bright” to “brighter” and “dim”.

### **⑭ Time display (Remote only)**

This function allows you to step through three alternative time displays.

During playback, press the “TIME” button each time, the display reads the following time circularly.



## **Select USB audio mode**

- ① Connect the USB port to the USB port of the computer with the USB cable which must be according to the USB2.0 specification.
- ② In no disc state, press the “SOURCE” button on the front panel or press the “SOURCE” button on the remote control unit to select USB, the display will show “USB”, USB input indicator will turn on.
- ③ Select the USB audio device of the computer as CS-55CD Output, and keep it in working state.