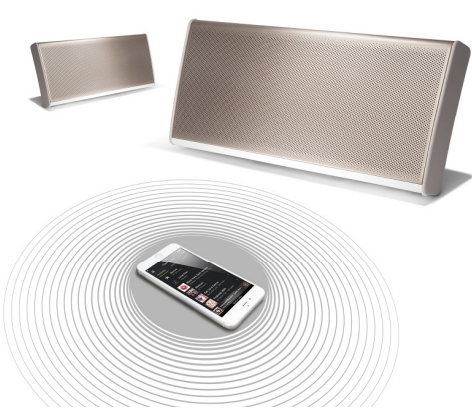


G5 Bluetooth Speaker

Sept 15



- Bluetooth technology (aptX and SBC) with Near Field Communication (NFC) for instant touch pairing
- 2.1 speaker configuration
- Speakerphone functionality
- Aux audio input (3.5mm)
- Line audio output (3.5mm)
- Pair a 2<sup>nd</sup> G5 speaker in a large room
- USB port for charging your phone on-the-go
- Digital Signal Processing (DSP)
- High quality class-D amplifier



Detailed Specifications

Auto Power Down (APD):	After 10 minutes of inactivity
Battery:	Rechargeable lithium-ion battery Up to 14 hours battery life from a single charge
Connectivity	Bluetooth (aptX and SBC) USB port for phone charging on-the-go 3.5mm AUX audio input 3.5mm line audio output
Colours	Gold, Titanium
Dimensions (W x H x D)	270 x 121 x 55 (10.6 x 4.8 x 2.1")
Weight	1.3kg (2.9lbs)