



Reference CD9



Thank you for choosing the Reference CD9 to be a part of your high performance music listening system. Since 1970, Audio Research has been creating some of the world's finest audio equipment. Each piece is handcrafted in Minnesota, and has been designed to provide many years of listening enjoyment.

We understand you are eager to begin listening; however, please take a few minutes to read through this guide for useful information concerning the operation of your new amplifier. Once installed, please allow an appropriate break-in period to fully appreciate the benefits this amplifier will provide to your system.

After reading the user guide, if you have any further questions regarding your amplifier, contact your dealer or Audio Research customer service - they will be happy to help you make the most of your new component.

Happy Listening!

Thank You.

Contents

Warnings 5

Installation

Illustrations	6
Before operating the CD9	7
In Your System	8
A note about Vacuum Tubes	8

Connections

Digital Inputs	9
Digital Outputs	9
Analog Outputs	9

Operation

10	Start-Up
10	Shut-Down
10	Break-in
11	Front Panel Controls
12	Remote Only Functions
13	CD Door Functions/Warnings

Software Installation

14	Windows PC Software Installation
14	Note to Mac OS Users
21	Removal of Previous Driver Versions

Maintenance

Vacuum Tubes	24
Servicing	24
Cleaning	24
Disposal and Recycling Guidelines	24
About Fuse Replacement	24

Warranty 25

FCC Rules 26

Specifications 27

Warnings

To prevent fire, or shock hazard, do not expose your CD9 to rain or moisture.

Do not place objects containing water on top of this unit.

This unit contains voltages which can cause serious injury or death. Do not operate with cover removed. Refer servicing to your authorized Audio Research dealer or other qualified personnel.

The detachable power cord on your CD9 is equipped with a heavy gauge, 3-conductor cable and a standard three-prong grounding plug. For absolute protection, do not defeat the ground power plug. This provides power line grounding of the CD9 chassis to provide absolute protection from electrical shock.

For continued protection against fire hazard, replace the fuse only with the same type and rating as specified at the fuse holder.

Do not operate the CD9 player without the supplied CD9 clamp installed on the CD. Gently place clamp on disc to prevent damaging the spindle mechanism.

Whenever the CD9 power is on, the door covering the drive mechanism/tray area should remain fully closed after inserting or removing a CD. Following this procedure will maintain proper ventilation and also minimize dust intrusion on the lens and drive mechanism.

If the unit is to be operated in an enclosure such as an equipment rack, make certain that adequate airflow above and to each side of the unit is provided, and ensure that the ventilation fans on the back panel are not obstructed.

The appliance coupler at the rear of this unit must be accessible for emergency power disconnect.

This unit is RoHS compliant.

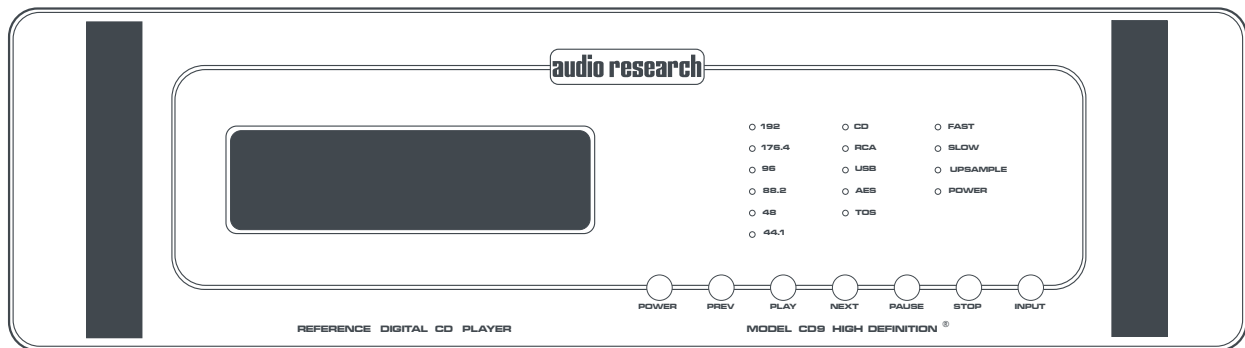
A note about packaging...

Save all packaging in a dry place away from fire hazard. Your CD9 compact disc player is a precision electronic instrument and should be properly cartoned any time shipment is made. You may not have occasion to return your unit to the factory for service, but if that should prove necessary, or other occasion requiring shipment occurs, the original packaging will protect your CD9 from unnecessary damage or delay.

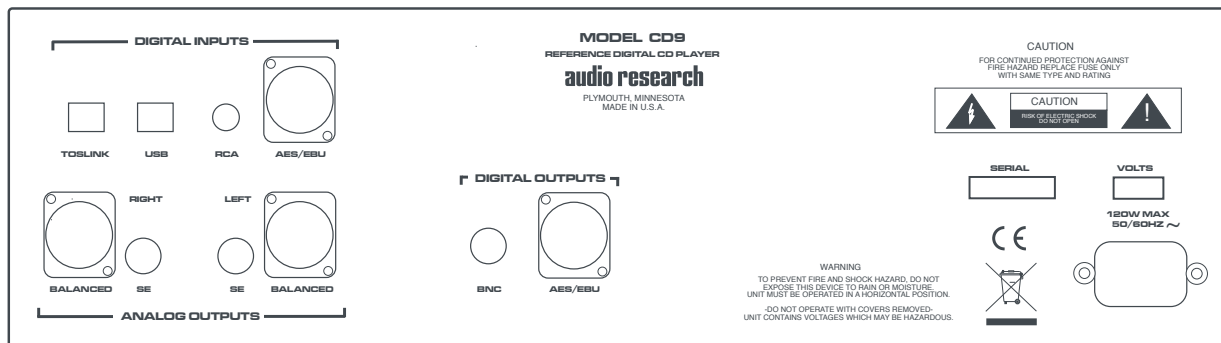
Installation

Illustrations

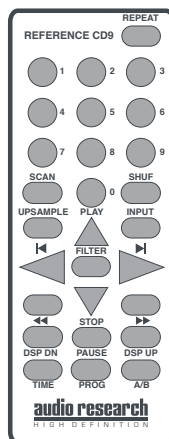
Front Panel



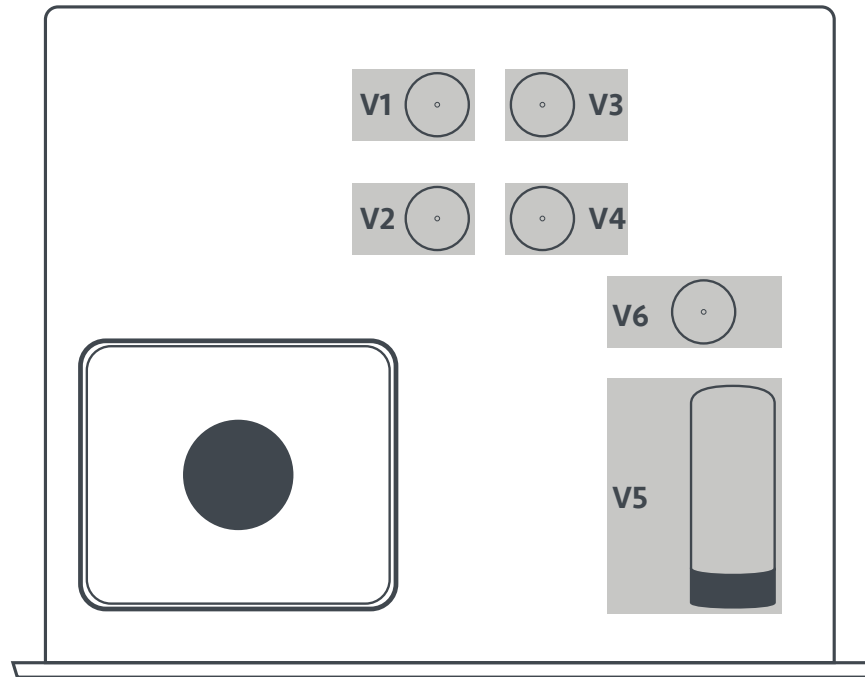
Rear Panel



Remote



Installation



Before operating the CD9

Carefully remove each of the six vacuum tubes (five 6H30, one 6550WE) from their protective foam blocks and install them in their sockets on the circuit board, matching the "V" number on the tube with each matching numbered tube socket. The 6550WE is mounted horizontally in the socket on the metal bracket. When installing or removing the 6550WE vacuum tube in the V5 socket location, grasp the metal bracket with one hand while inserting the tube with the other to prevent flexing of the circuit board and possible damage to it.

Note: double damping rings are installed at the factory on each 6H30 tube for maximum sonic performance.

Installation

In your system

To insure normal component life and safe operation this unit must be operated only in an upright position. Adequate airflow and proper cooling can occur only if there is no restriction above and behind the unit and on either side.

The special non-marring elastomer feet provide adequate spacing and stability only on a smooth, hard surface, and also assist to isolate the CD player from spurious vibrations. For upright stability and best performance, never operate the unit while it is sitting on a soft surface such as a thick rug or carpet.

Due to its weight, this CD player must be supported on a surface specifically rated for such a load. Check with the manufacturer of your support system to be sure it is rated to handle this weight.

If the unit is to be operated in an enclosure such as an equipment rack, make certain that adequate airflow above and to each side of the unit is provided.

The 'ambient' operating temperature should never exceed 120° F or 49° C. Improper installation will cause premature tube failure and will affect your warranty, as well as the service life of the unit.

It is normal for a vacuum tube CD player to run quite warm, and if used for prolonged periods, hot to the touch. All components within are, however, operated at safe, conservative levels and will not be improperly affected thereby, providing the requirements outlined above are adhered to.

A Note about Vacuum Tubes

The vacuum tubes in your Reference 6 have been burned in, tested and electrically matched to provide the best performance and reliability of your preamplifier. That said, vacuum tubes must be replaced from time to time. The 6H30 tubes in the Reference 6 should have an expected life of approximately 4,000 hours, while the 6550WE tube in the power supply should have a life expectancy of approximately 2,000 hours. These life expectancies are only approximate.

Connections

Digital Connections

The CD9 offers four digital inputs, and two standard digital output options. Which option is best for your system will depend on your personal listening preference, the nature of your system installation requirements, and the options allowed by your external digital processor, if one is used.

Digital Inputs

Toslink: Connect to a transport, computer or other device equipped with Toslink (optical) digital output. Press the INPUT button until the 'Toslink' LED is illuminated.

USB: Connect to a Windows-based PC or Mac computer for music playback from your computer. Press the INPUT button until the 'USB' LED is illuminated. Note: you must install the software on the included CD (also downloadable from www.audioresearch.com/downloads.html) to utilize the USB connection.

RCA: Connect to a transport or other device equipped with an RCA digital output. Press the INPUT button until the 'RCA' LED is illuminated.

AES/EBU: Connect to a transport or other device equipped with an AES/EBU digital output. Press the INPUT button until the 'AES/EBU' LED is illuminated.

Digital Outputs

BNC: Use 75-ohm impedance coaxial cable with locking BNC-type connectors. An RCA/BNC adaptor is also supplied.

AES/EBU: For connection to digital processors having the AES/EBU-Standard interface.

Analog Outputs

Single-Ended (RCA): For connection to the inputs of a line-level preamplifier or integrated amplifier.

Balanced (XLR): For connection to the balanced inputs of a line-level preamplifier.

Caution

The digital outputs supply only a digital signal and should therefore only be connected to an input which is suitable for this signal. Never connect either of these digital outputs to a non-digital input of a preamplifier (such as those labeled CD, AUX, PHONO, TAPE, etc.) or to a power amplifier. To do so is to risk damage to your system and may void any or all warranties involved.

Operation

Start-Up

Once plugged into the power receptacle, after the tubes have been installed (see above), push the front panel Power switch to turn on the CD9. The central green front panel power LED will glow dimly for about a 40 second circuit warm-up interval with the output automatically muted. When the LED glows brightly, the CD9 is ready for operation.

Once powered up and operational, with the CD door fully closed, the unit will default to the operate setting (display, transport and front panel controls are activated). Because the CD9 reaches its full sonic potential from "cold" in a shorter warm-up time period than a solid state CD player, it's recommended that it be powered off for any extended time it is not in use. This will save on tube life.

Shut-Down

Set preamplifier Mute switch to "Mute" position.

Press CD9 front panel Power switch to turn unit off.

Note

The CD9 should be the first component turned on in your system (along with any additional sources). If the CD9 is turned on after the amplifier, and the preamplifier is also powered, it will amplify any extraneous turn-on noises the preamplifier or other source components might generate, which could potentially damage the loudspeakers. Good operating practice dictates that the amplifier should be turned on last, and turned off first in an audio system.

Break-in

All quality stereo equipment benefits from a break-in period; during this time, the various components, wiring and solder connections change as electrical signals pass through them. While your CD9 will sound fantastic out of the box, it will only improve with continued use.

Operation

Front Panel Control Functions

Power: The Power switch turns the CD9 completely on for operation (indicated by the LED being brightly lit), each time preceded by a warm-up interval of about 40 seconds when the LED is dim and the output is automatically muted. Press power switch again to turn CD9 off-indicated by unlit LED.

Prev: Selects the previous track to play. Continue pressing to cycle backward through previous tracks. (Track number will appear on display.)

Play: Starts play. CD door must first be fully closed. Begins to play first track unless another is selected. Restarts track if pressed during play. (Track number and elapsed track time appear on display.)

Next: Selects the next track to play. Continue pressing to cycle forward through tracks. (Track number will appear on display.)

Pause: Interrupts play (display will read "PAUSE"). Release PAUSE by pressing it a second time to resume playing disc.

Stop: Stops play. (Number of tracks and total disc track time appear on display.)

Input: Selects between the CD player and digital inputs on the rear panel. Pressing the Input button repeatedly will cycle through all the inputs.

Note

Play, Pause, Stop, Previous and Next only function when using the CD player.

Operation

Remote Only Functions

The remote control unit includes all of the above described CD9 front panel control functions plus the following additional functions. (Functions in [] indicate labeling abbreviations appearing on remote control unit.)

0-9 Buttons: Pressing numbered button(s) corresponding to the disc track number will advance disc to desired track. Also used to select tracks when compiling a custom disc playback program (see PROGRAM function description below).

Shuffle [SHUF]: Toggles between Shuffle play (random playback order) and normal play (sequential playback). SHUFFLE appears in the display window when random playback is selected.

Filter: Select between Fast and Slow digital filters. Pressing FILTER will toggle between the two options, and will be indicated by an LED next to the selected filter name.

Display Down/Display Up: [DSPDN/DSPUP]: Decreases/Increases display intensity, offering four levels of brightness as well as display off.

Scan: With a stopped CD and the CD door closed, press SCAN and the first 10 seconds of each track will be played in sequence. ("SCAN" will light up on display, then 10 seconds are counted out next to each track number.) To hear a track in full that the player is presently scanning, press SCAN button again which will cancel SCAN function.

A/B: Press the A/B button once while music is playing, then press it again; the musical passage in the interval between pressing the button is then repeated in a loop until pressing the A/B button once again to discontinue it. Display reads "A—B" to show activation. Note: you must discontinue the A/B loop before pressing PLAY to resume normal playback. Pressing and holding this button down will fast search backward through the track that is playing until it is released. Rate of search accelerates as button is held down.

Upsample: Select between native sampling rate playback and integer upsampling. 44.1 kHz and 88.2 kHz sampling frequencies are upsampled to 176.4 kHz, whereas 48 kHz and 96 kHz frequencies are upsampled to 192 kHz. An LED will indicate which sampling frequency is selected. Note: When using the USB input, upsampling is available only to 88.2 kHz or 96 kHz.

Input: Select between CD playback and the digital inputs on the rear panel (Toslink, USB, RCA, AES/EBU). Pressing INPUT toggles through the different inputs, and the selected input will be indicated by an LED next to the input name. Note: display window is illuminated only during CD playback.

Repeat [REP]: Press REPEAT once to repeat the entire disc continuously ("REPEAT" appears in display window). Press REPEAT once more to continuously repeat the track now playing ("REPEAT 1" appears in display window). Press REPEAT once again to discontinue repeat mode.

Operation

Remote Control Functions continued

Program [PROG]: Allows compiling a custom track selection and playback order of up to 20 tracks on a disc. With the player in STOP mode, enter the desired first track number and then press the PROGRAM button. The word "PROGRAM" will light and the display will show the total number of tracks programmed and total programmed time. If a second track selection is entered, the word "PROGRAM" flashes, indicating that other track(s) have already been stored in the program memory. Press the PROGRAM button to save the second track selection. Repeat procedure to program additional tracks as desired. This programming procedure, with readout of the cumulative total number of programmed tracks and total programming time (including time between tracks), works for any of the first 13 numbered tracks on a disc. You may program track numbers higher than 13, but from then on no track time information will appear on the display. To preview a program before playing it, press PLAY and then use the NEXT and PREV buttons to cycle through track selections. Pressing PLAY will begin playing program. Pressing STOP once will stop program play. Pressing PLAY again will resume play from beginning of program. To cancel program, press STOP twice.

Time: Pressing and releasing TIME repeatedly will cycle through the following information on the display: current track time elapsed (default setting initially seen on display), total disc time elapsed, and total disc time remaining.

CD Door Functions/Warnings

Do not attempt to play a CD without first installing the supplied CD9 magnetic disc clamp on the CD. Use only the supplied CD9 clamp in your CD9 player.

CD door must be fully closed for the CD9 to operate.

If the CD door is closed without a CD in the player and the CD9 is powered up, the display will read "NO DISC".

If a CD is inserted (label side up) in the CD9, the CD door is fully closed and the CD9 is powered up, the CD will spin for a few seconds while the track information is accessed. The number of tracks and total disc time will then be displayed, indicating the CD is ready to play.

Keep the CD door closed when the CD9 is turned off and not in use to keep dust out of the lens and drive area.

Note

When the CD9 power is on, keep the CD door fully closed (except to change CDs) to allow heat to escape through all of the top cover holes and prevent over-heating of the unit.

Software Installation

Windows PC Software Installation Instructions

Installation of the DAC USB Audio Device drivers is only necessary when using the USB 2.0 HS input on the CD9. Software installation is not necessary if only using the two Toslink or RCA inputs.

Note to Mac OS users

No driver installation is necessary when using a Mac computer in conjunction with the CD9.

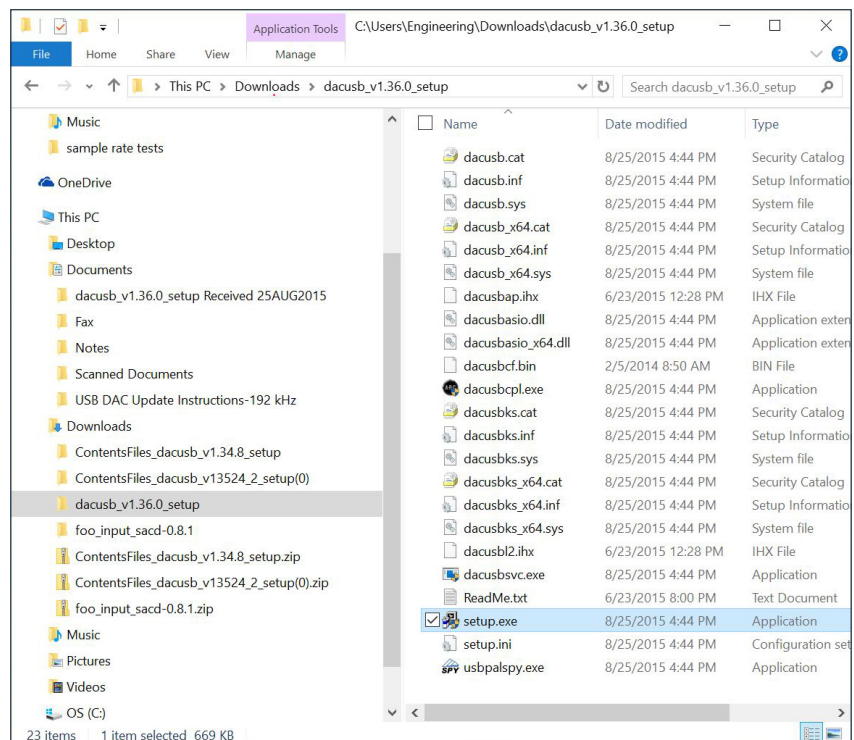
Before starting, make certain the CD9 is disconnected from the PC system. You will be prompted to connect the CD player at the proper time during the update/installation procedure.

Perform the following operations with the CD9 disconnected from the PC.

Note

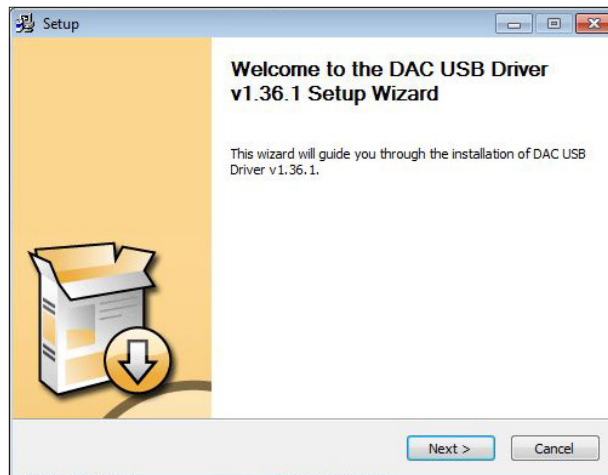
If you have had another Audio Research driver installed on your PC, please see page 21 for instructions to uninstall any previous driver versions before installing the new version.

Load the new Audio Research “dacusb_v1.36.1_setup” driver folder onto your PC, via internet download or contact your sales representative (downloadable from: www.audioresearch.com/downloads.html). This may initially be a zip folder.

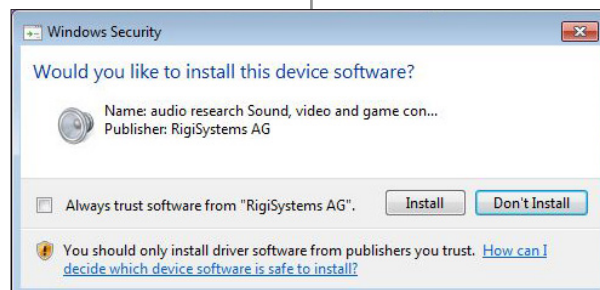
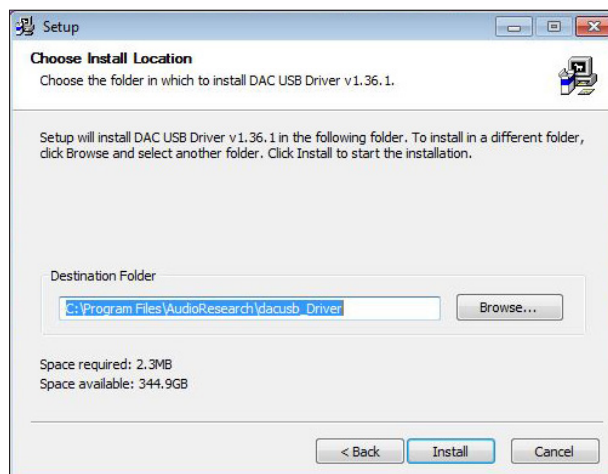


Software Installation

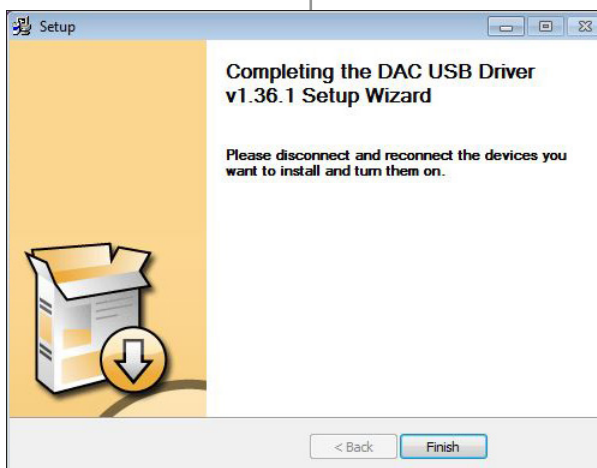
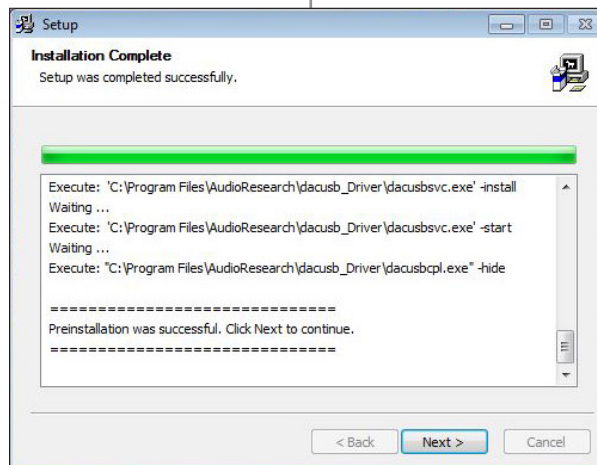
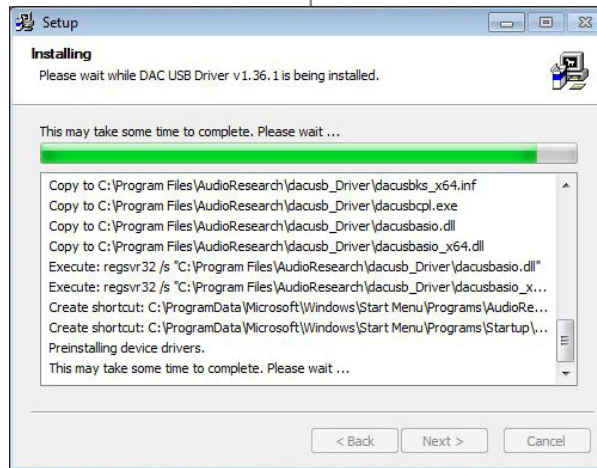
Open (unzip) the new USB DAC driver folder and install the new driver, using the "setup.exe" program, highlighted in the previous illustration.



Follow the installation steps when prompted.

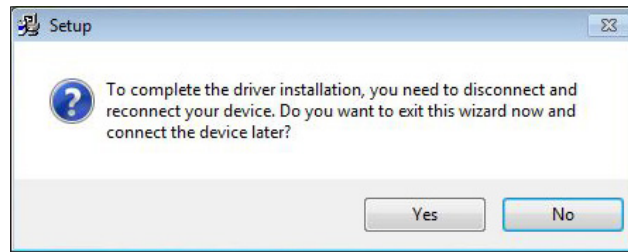


Software Installation

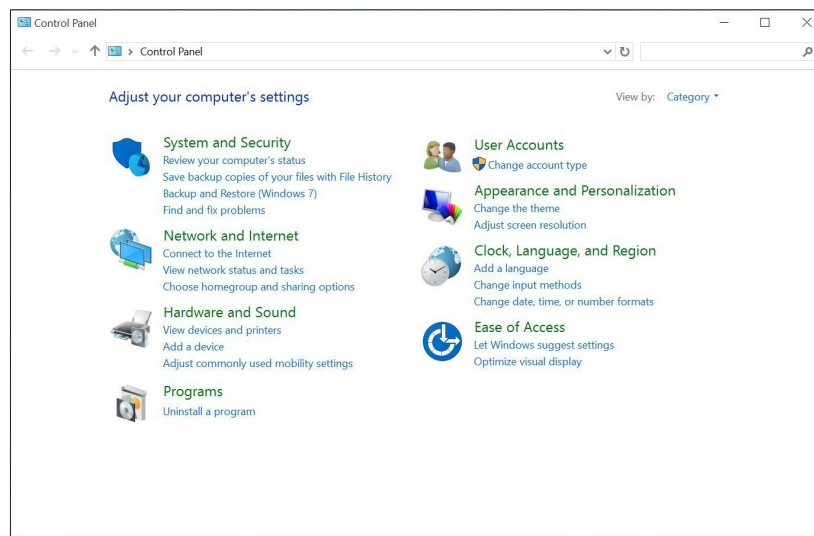


Software Installation

You will have the option to complete the process by connecting the CD9 at a later time if you choose. If so, click finish.



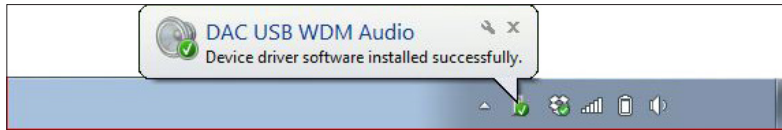
Otherwise, when prompted during the install, connect the CD9 to a USB 2.0 H.S. or USB 3.0 port on your PC system. Prior to connecting the CD player, make certain the system is powered off. Next, connect to the USB port, and power on the CD9. The PC system will acknowledge the presence of the CD player, and complete installation of the DAC USB device driver. This driver attachment can be found in the Windows Control Panel under:/ Hardware and Sound/Devices and Printers.



The device should be shown as "USB DAC 2.0", or, depending upon the operating system, it may appear as "USB DAC 2.0 192". (Please note that you will only see this device in the control panel if the source player is attached to the USB port and power is on for the CD9).

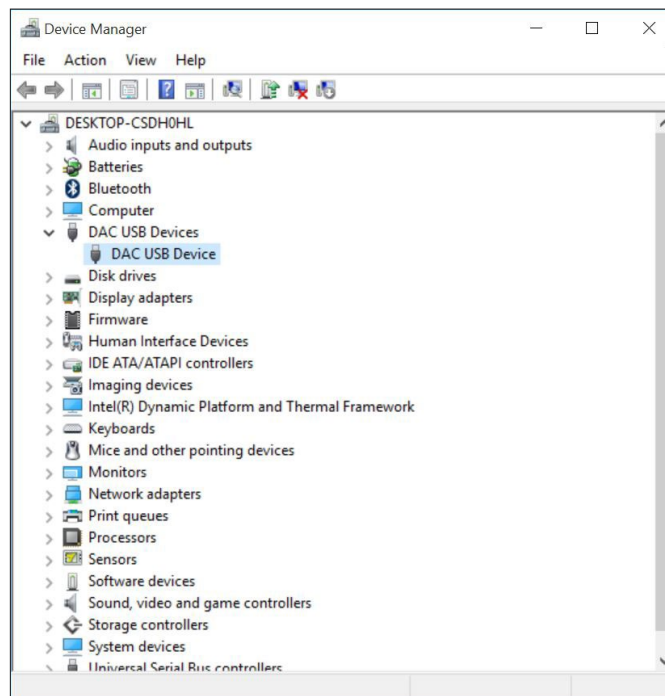
Software Installation

When the device driver is successfully installed, power down the CD9 momentarily, and power it up again (while remaining connected to the USB port on your PC). At this time, the system will automatically search for and complete installation of the audio output driver that is needed to format the audio output for CD9.



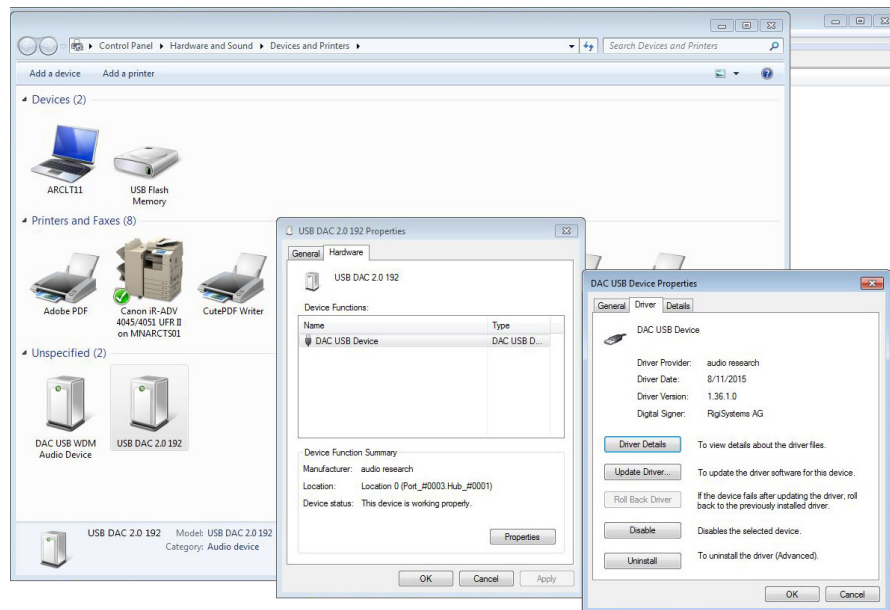
The system will prompt when completed "DAC USB WDM AUDIO device driver software installed successfully". After the audio output driver is installed, your system drivers are configured and ready to play audio source files.

Also, when the CD9 is connected and powered up, within the Windows: Control Panel/ Device Manager, you will be able to see the presence of the "DAC USB DEVICE":



Software Installation

If you open the window for that device, you will see the DAC USB device properties. Click on the “DRIVER” tab to see the current revision of the driver software installed.

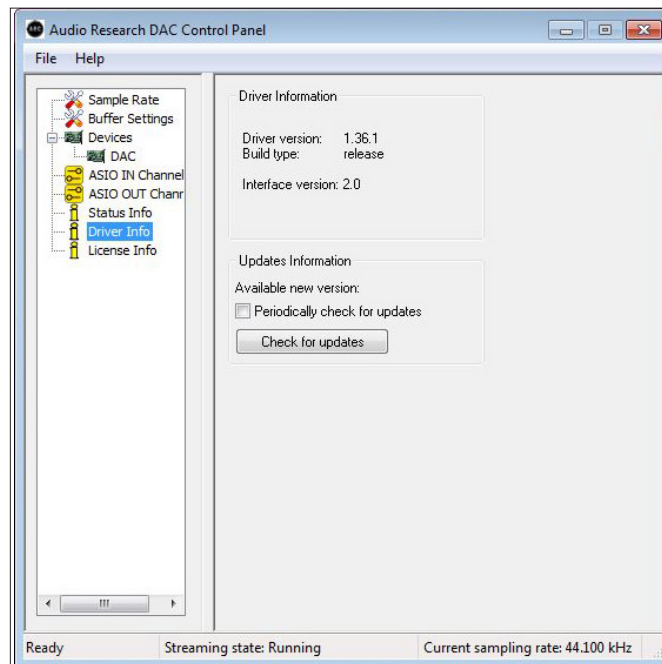


Software Installation

Next, You will need to direct your PC System music software player (e.g. JRiver, Foobar2000, Signalyst HQPlayer, etc.) to connect and play your audio tracks through the CD9. With the CD player connected and powered up:

Set your software preferences to the DAC USB output path.

There is also a separate application control panel available for the CD9. When attached and powered, the ARC icon will be located in the pop-up window in the bottom right corner of the PC master window:

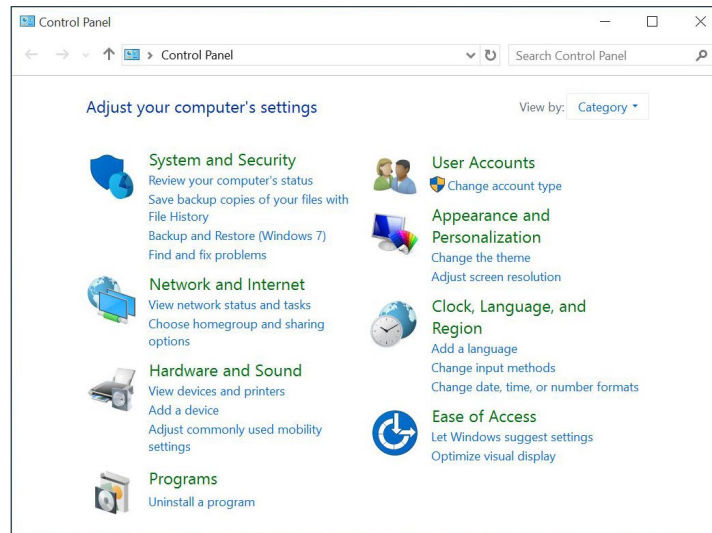


Finally, verify in the Windows Control Panel, under (Devices and Printers) that your Windows Speaker/Volume option is able to see and select the external Audio Research “USB DAC 1/2” audio output path. (Alternatively, you may need to select this path in the “Windows Speaker/Mixer” popup.) Select the “MIXER” and then choose the USB DAC 1/2 in order to set the audio output path to be directed to the DAC input. (Please remember that this output path will not show up or be selectable unless the CD9 is attached *and* powered up).

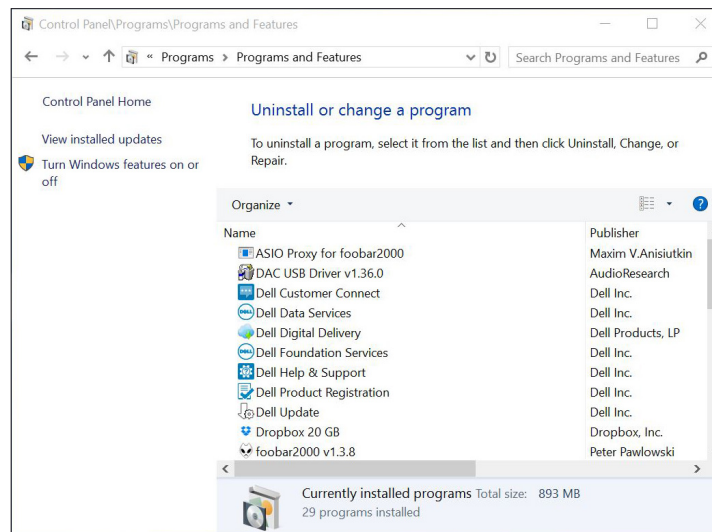
Software Installation

Removal of previous driver versions

Uninstall any prior/existing Audio Research Corp. system Drivers (Windows OS). Using your PC system, find and open the Windows “Control Panel” features.



Find and open the “Uninstall Programs” for your particular computer. This may be named: “Programs” or “Programs and Features”.

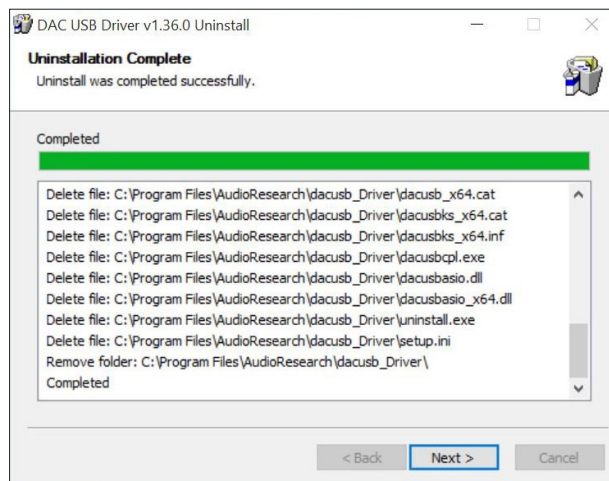


Software Installation

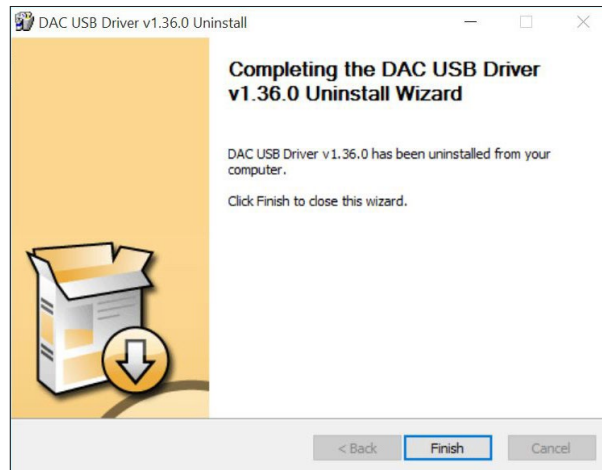
Find and select all programs named “DAC USB Driver” or similar, whose Publisher name is “AudioResearch”, “AudioResearchCorp” or “RigiSystems AG” or similar.



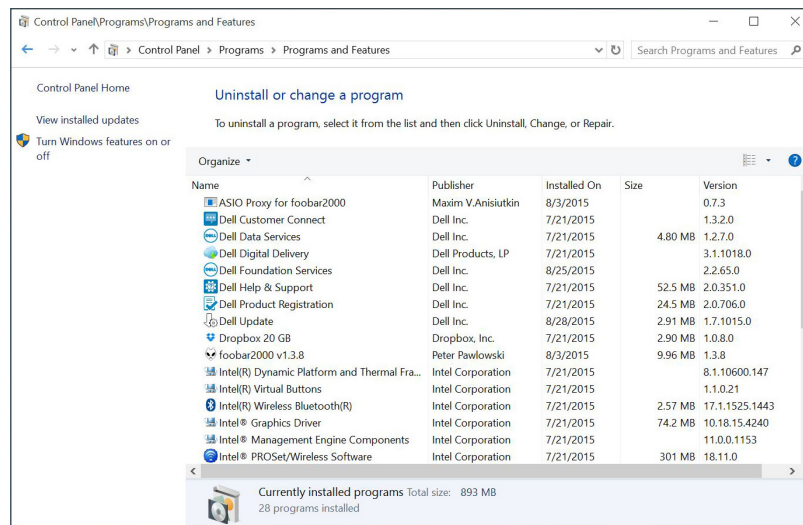
Select Uninstall for each program found with this identity, and follow the directions to complete this process.



Software Installation



After you click “Finish” you should see an updated Program listing with the driver(s) removed:



Maintenance

Vacuum Tubes

It is recommended that you replace the vacuum tubes of your CD9 in sets. All of the tubes in your CD player have been matched to have similar operating characteristics, to provide the best sound quality and reliability.

Servicing

Because of its careful design and exacting standards of manufacture, your CD9 CD player should normally require only minimal service to maintain its high level of performance.



Disposal and Recycling Guidelines

To dispose of this electronic product, do not place in landfill. In accordance with the European Union Waste Electrical and Electronic Equipment (WEEE) directive effective August 2005, this product may contain regulated materials which upon disposal require special reuse and recycling processing. Please contact your dealer or importing distributor for instructions on proper disposal of this product in your country. Or, contact Audio Research Corporation (763-577-9700) for the name of your importing distributor and how to contact them. Packing and shipping materials may be disposed of in a normal manner.

Cleaning

To maintain the visual appearance of your CD9, occasionally wipe the front panel and top cover surfaces with a soft damp (not wet) cloth to remove dust. A mild, non-alkaline soap solution may be used to remove fingerprints or similar smudges. Cleaners containing abrasives should not be used as they will damage the brushed grain of the front panel finish, as well as the LED display window. A dry 2-inch pure bristle paint brush works well to remove dust from bevels, reliefs and switches. The CD9 CD compartment may be gently dusted: carefully avoid touching the laser assembly area to prevent possible damage.

About Fuse Replacement

The CD9 has two fuses; both are located towards the back of the chassis on the left. One fuse is accessible with the removal of the top cover, and the other with the removal of the bottom panel. See specifications for information on fuse types.

Caution

Your CD9 contains sufficient levels of voltage and current to be lethal. Do not tamper with a component or parts inside the unit. Refer any needed service to your authorized Audio Research dealer or other qualified technician. Should service be necessary, please contact your Audio Research dealer, or Audio Research Customer Service (763) 577-9700.

Limited Warranty

Audio Research Corporation products are covered by a 3-Year Limited Warranty, or a 90-Day Limited Warranty on vacuum tubes. This Limited Warranty initiates from the date of purchase, and is limited to the original purchaser, or in the case of demonstration equipment, limited to the balance of warranty remaining after original shipment to the retailer or importer.

In the United States, the specific terms, conditions and remedies for fulfillment of this Limited Warranty are listed on the warranty card accompanying the product in its shipping carton, or may be obtained from the authorized retailer or from the Audio Research Customer Service Department. Outside the United States, the authorized importing retailer or distributor has accepted the responsibility for warranty of Audio Research products sold by them. The specific terms and remedies for fulfillment of the Limited Warranty may vary from country to country. Warranty service should normally be obtained from the importing retailer or distributor from whom the product was purchased.

In the unlikely event that technical service beyond the ability of the importer is required, Audio Research will fulfill the terms and conditions of the Limited Warranty. Such product must be returned at the purchaser's expense to the Audio Research factory, along with a photocopy of the dated purchase receipt for the product, a written description of the problem(s) encountered, and any information necessary for return shipment. The cost of return shipment is the responsibility of the purchaser.

FCC Rules

Note

This equipment has been tested and found to comply with the limits for a Class B digital device, pursuant to Part 15 of the FCC Rules. These limits are designed to provide reasonable protection against harmful interference in a residential installation. This equipment generates, uses and can radiate radio frequency energy and, if not installed and used in accordance with the instructions, may cause harmful interference to radio communications. However, there is no guarantee that interference will not occur in a particular installation. If this equipment does cause harmful interference to radio or television reception, which can be determined by turning the equipment off and on, the user is encouraged to try to correct the interference by one or more of the following measures:

Reorient or relocate the receiving antenna.

Use interconnect cables of no more than one meter in length.

Increase the separation between the equipment and receiver.

Connect the equipment into an outlet on a circuit different from that to which the receiver is connected.

Consult the dealer or an experienced radio/TV technician for help.

Specifications

Frequency Response: +0-3dB, 3Hz to 96kHz at rated output. 0.15dB 20Hz to 20kHz. (Balanced, 200k ohms load)@ 192kHz sample rate.

Distortion: THD+N Less than .003% at 2V RMS BAL output.

Signal-Noise-Ratio: 110dB

Dynamic Range (AES17): 110dB

IMD (SMPTE): .002%

RMS Noise level: -95dBV (20-20kHz)

Gain: 14.0dB Balanced, 7.0dB SE.

Input Impedance: Digital: 75 ohms RCA, 110 ohms AES/EBU, OPT 660nm TOSLink fiber 44.1 to 96kHz.

Output Impedance: 660 ohms Balanced, 330 ohms SE Main (2), 20K ohms minimum load and 2000pF maximum capacitance.

Output Polarity: Non-inverting.

Max. Output: At 0.0dB input, 5V RMS into 200K ohm balanced load.

Digital Sample Rates: 24 bits @ 44.1kHz to 192kHz, SPDIF, AES/EBU and USB 2.0 HS.

Upsampling: Select upsampling or Native mode; CD, RCA, AES/EBU, TOS upsample to 176.4 or 192kHz. USB upsamples to 88.2 or 96kHz.

Master Oscillator: 22.579mHz \pm 20Hz for 44.1, 88.2 & 176.4kHz. 24.576mHz \pm 20Hz for 48, 96 & 192kHz.

Intrinsic Jitter: <10ps

Outputs Digital: XLR Balanced AES/EBU 110-ohms 4V P-P, BNC coax SPDIF 75-ohms 0.7V P-P.

Channel Separation: 107dB @ 1kHz.

Push buttons: Power, Previous, Stop, Pause, Play, Next, Input.

Signal Format (disc): Sample freq. 44.1kHz, Quantization bit; 16bit linear/channel, Channel bit rate; 4.3218Mb/sec, Channel modulation code; EFM (8-14 modulation), Error Correction; CIRC.

Drive Mechanism (Top Load): Wow & Flutter; Un-measurable (Quartz stability); Discs; Accepts 5" (12cm) and 3" (8cm) sizes.

Optical pickup: Type; 3-beam LDGU (Laser Diode & Grating Unit), with holographic diffraction light pen, Laser; GaAlAs semiconductor, 780nm, 0.5mW max. output, Servo; Digitally-controlled low inertia linear positioning actuator.

Jitter reduction: High-stability crystal-controlled re-clocking for all outputs.

Display: Six-digit vacuum fluorescent with optical filter; LED display; CD, AES, USB, RCA, TOS, Fast, Slow, Upsample, Power, 44.1, 48, 88.2, 96, 176.4, 192kHz.

Tube complement: (4) 6H30 dual triodes, plus (1) 6550WE & 6H30 in power supply.

Remote Buttons: Repeat track/disc, 0-9 digit entry keys, Scan ten seconds each track, Pause program, Stop program, Play, Shuffle tracks, Program enters selection on program list, Time elapsed, remaining track, remaining disc, A/B repeat segment, Filter select, Input select, Pause, Play, Skip>, Skip<, FF, FR, Upsample/Native mode, DSP-DN, DSP-UP.

Power Requirements: 105-125VAC 60Hz (210-250VAC 50/60Hz) 120 watts maximum. Sleep mode 1 watts maximum.

Dimensions: Width 19" (48 cm)
Height 5.25" (13.4 cm) (standard rack panel)
Depth 15.375" (39 cm)
Handles extend 1.50" (3.8 cm) forward of the front panel.

Weight: 33.0 lbs. (15.0 kg) Net; 43 lbs. (19.5 kg) Shipping.

This unit is RoHS compliant

Downloaded from www.linephaze.com

- Find specs, manuals and used listings across thousands of audio products.

THERE IS ONLY ONE REFERENCE®



3900 Annapolis Lane North
Plymouth, MN 55447
www.audioresearch.com

Specifications subject to change without notice.

©2015 Audio Research Corporation. Reproduction of this document in part or whole is expressly forbidden without written

Downloaded from www.linephaze.com

- Find specs, manuals and used listings across thousands of audio products.